

Truck

In this section we offer products commonly used on HGV and LGV including over-centre locks, mudwing stays, king pin locks, steps and roller buffers but some products listed in other sections may also be used on trucks and trailers e.g. twistlocks, paddle catches and handles etc.

We will be pleased to give detailed advice, but the following points should be considered:

- Mudwing stays are all made from Ø34mm tube but can be supplied straight or cranked and with M16 & M14 stud or 3 x M10 spigot fixings.
- King pin and anti-hitch locks are primarily used for security purposes but they can also be used for maintenance purposes to lockout trailers and prevent the unauthorised use of them while awaiting repair or test etc
- For more information and dimensions please visit www.bloxwichdoorgear.com

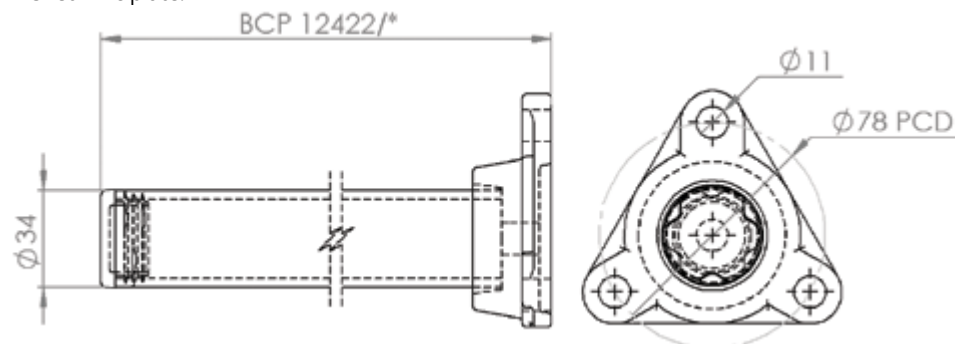
Model No BCP12422

Mud Wing Stay Spigot Fixing–Straight Tube

Supplied in: Self colour (S), zinc plate (Z) or galvanised (G)

Ø34 tube length as required

When ordering, add length and finish symbols as suffix to above part no e.g. BCP 12422/800Z gives 800mm overall length finished zinc plate.



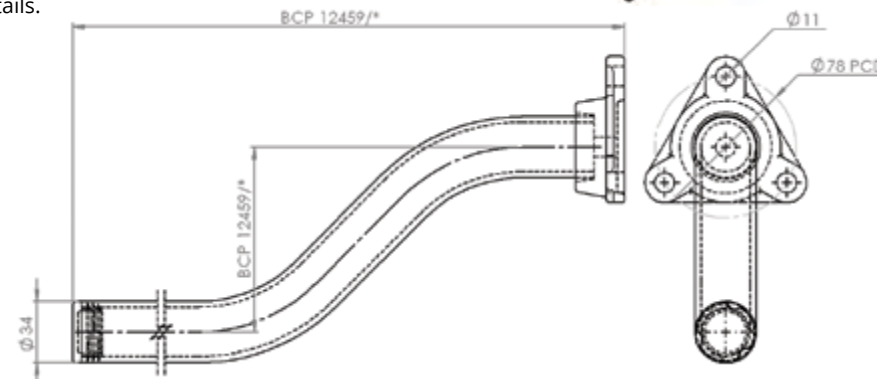
Model No BCP12549

Mud Wing Stay Spigot Fixing–Cranked Tube

Supplied in: Self colour (S), zinc plate (Z) or galvanised (G)

Ø34 tube length and crank as required

When ordering, add length and finish symbols as suffix to above part no e.g. BCP 12549/800Z gives 800mm overall length finished zinc plate and please contact us to discuss the crank details.



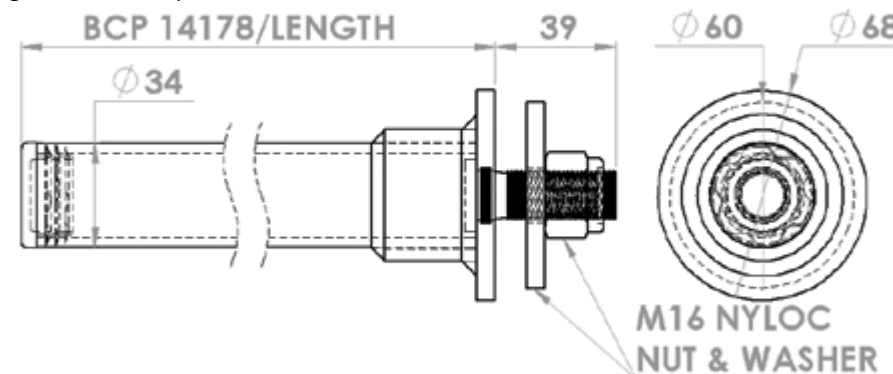
Model No BCP 14178

Mud Wing Stay Stud Fixing–Straight Tube

Supplied in: Self colour (S), zinc plate (Z) or galvanised (G)

Ø34 tube length as required

When ordering, add length and finish symbols as suffix to above part no e.g. BCP 14178/800Z gives 800mm overall length finished zinc plate.



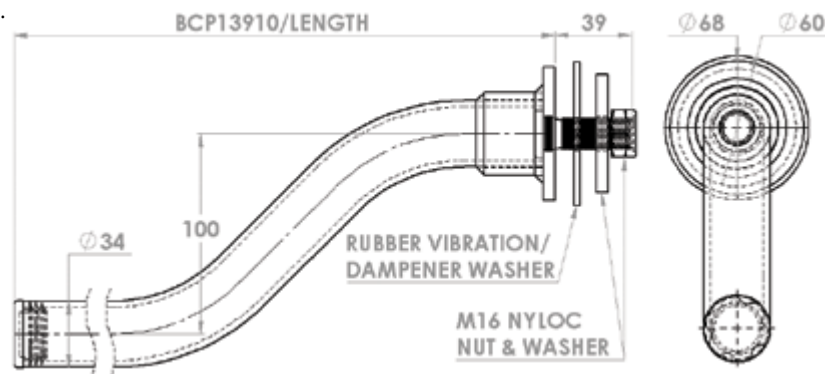
Model No BCP 13910

Mud Wing Stay Stud Fixing-Cranked Tube

Supplied in: Self colour (S), zinc plate (Z) or galvanised (G)

Ø34 tube length and crank as required

When ordering, add length and finish symbols as suffix to above part no e.g. BCP 13910/800Z gives 800mm overall length finished zinc plate and please contact us to discuss the crank details.



Model No BCP20008

XPf34 Mudguard Fixing Kit

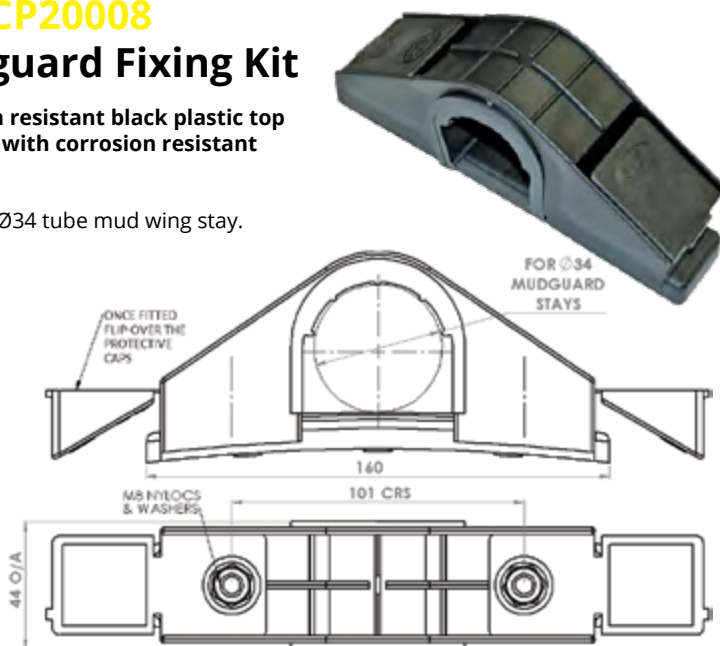
Supplied in: Corrosion resistant black plastic top plate & backing plate with corrosion resistant fasteners

Use: For use with any Ø34 tube mud wing stay.

Suitable for most MDPE & HDPE mudguards (radius > 560mm).

Once fitted the flip-over protective caps provide secondary retention in addition to the nyloc nuts.

Weight: 610 g



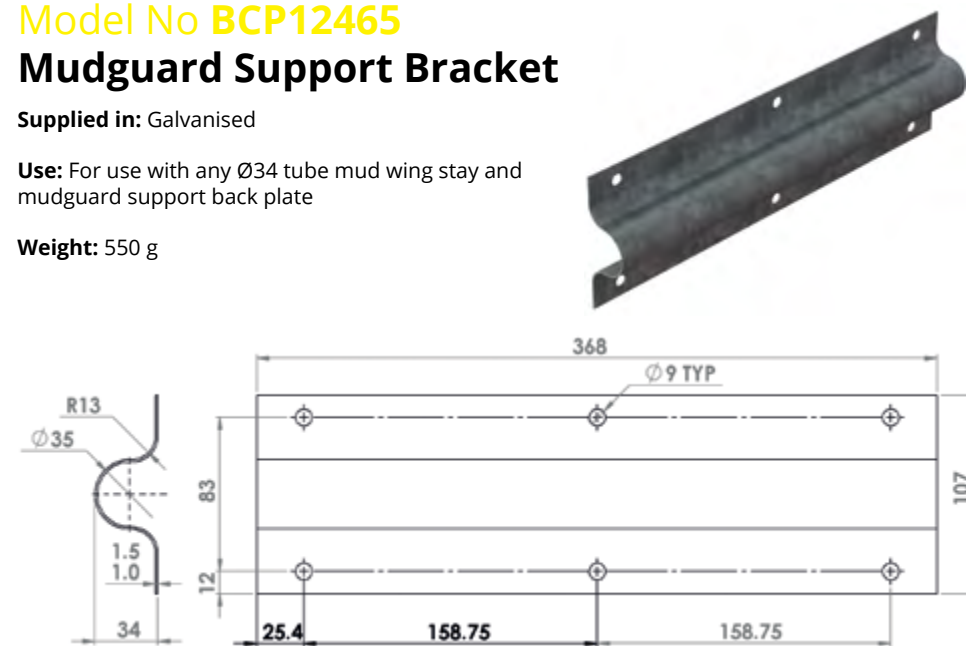
Model No BCP12465

Mudguard Support Bracket

Supplied in: Galvanised

Use: For use with any Ø34 tube mud wing stay and mudguard support back plate

Weight: 550 g



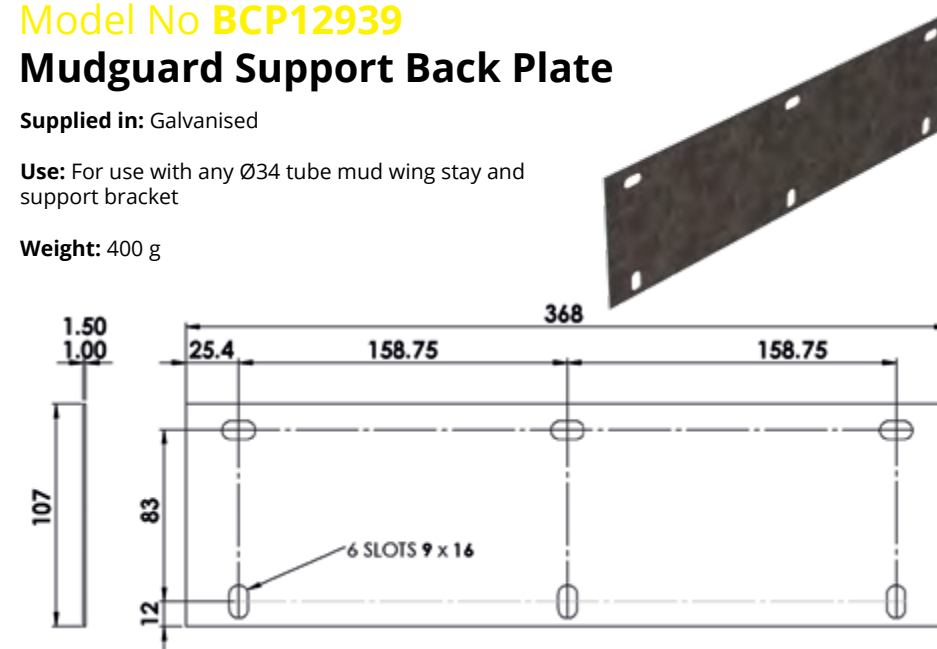
Model No BCP12939

Mudguard Support Back Plate

Supplied in: Galvanised

Use: For use with any Ø34 tube mud wing stay and support bracket

Weight: 400 g



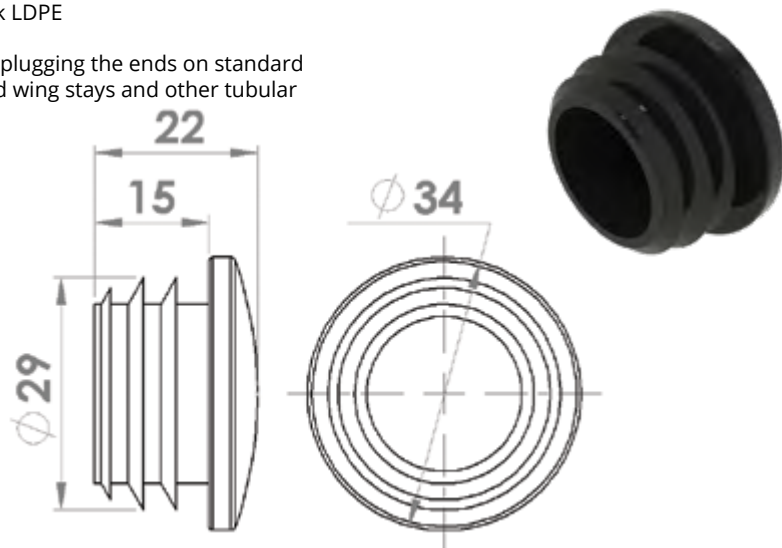
Model No BCP12410

Set Of 10 Black Plastic Ø34mm Tube Plugs

Supplied in: Black LDPE

Use: Suitable for plugging the ends on standard Ø34mm tube mud wing stays and other tubular products

Weight: 50 g



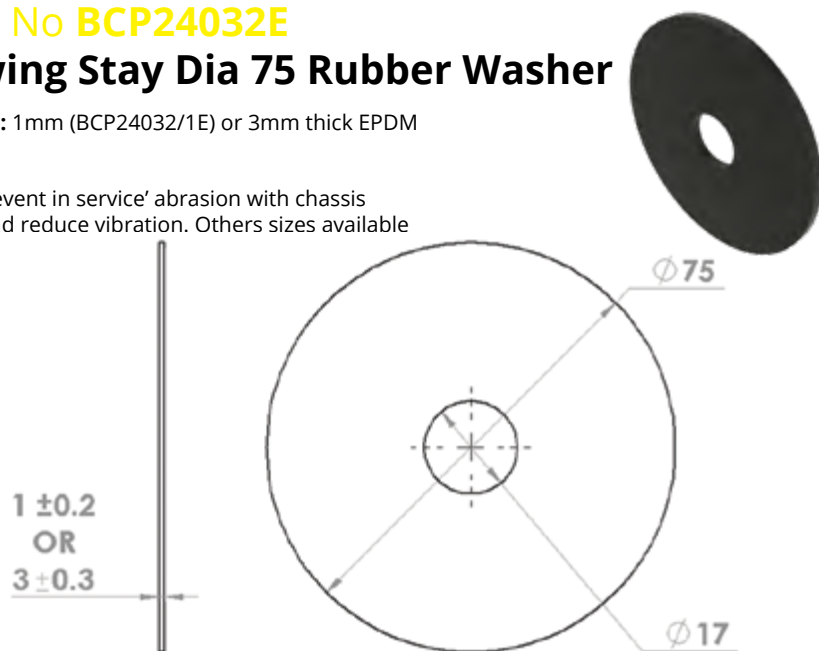
Model No BCP24032E

Mudwing Stay Dia 75 Rubber Washer

Supplied in: 1mm (BCP24032/1E) or 3mm thick EPDM Rubber

Use: To prevent in service' abrasion with chassis surfaces, and reduce vibration. Others sizes available on request

Weight: 4/1



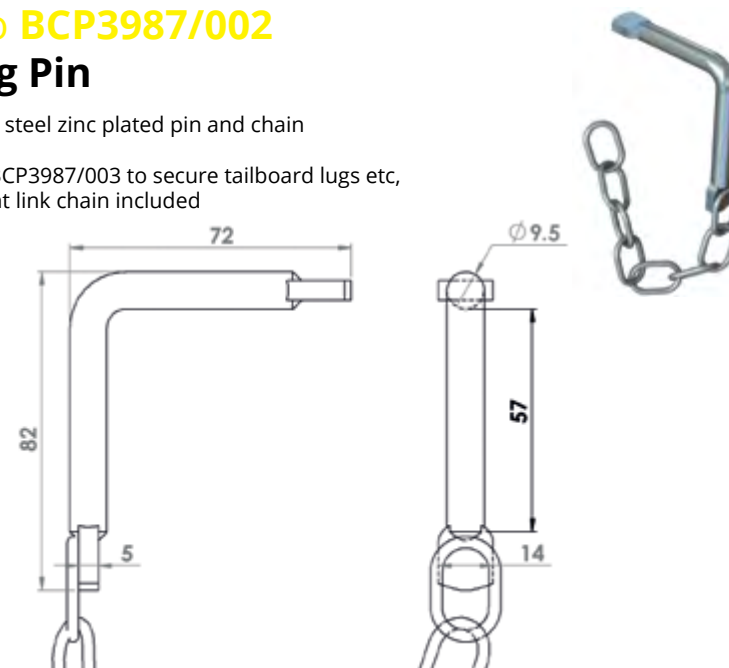
Model No BCP3987/002

Retaining Pin

Supplied in: Mild steel zinc plated pin and chain

Use: Along with BCP3987/003 to secure tailboard lugs etc, 191mm of straight link chain included

Weight: 110 g



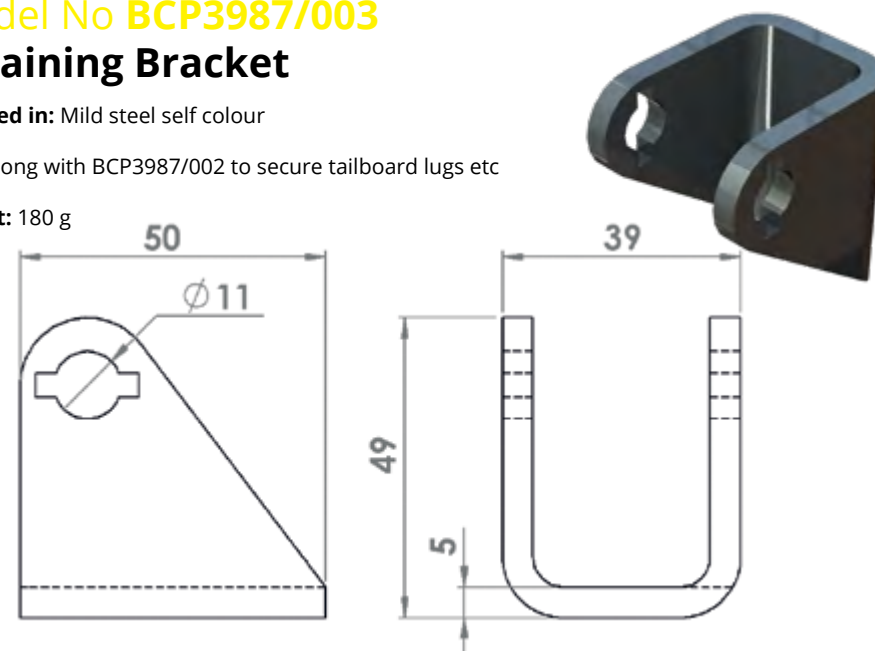
Model No BCP3987/003

Retaining Bracket

Supplied in: Mild steel self colour

Use: Along with BCP3987/002 to secure tailboard lugs etc

Weight: 180 g



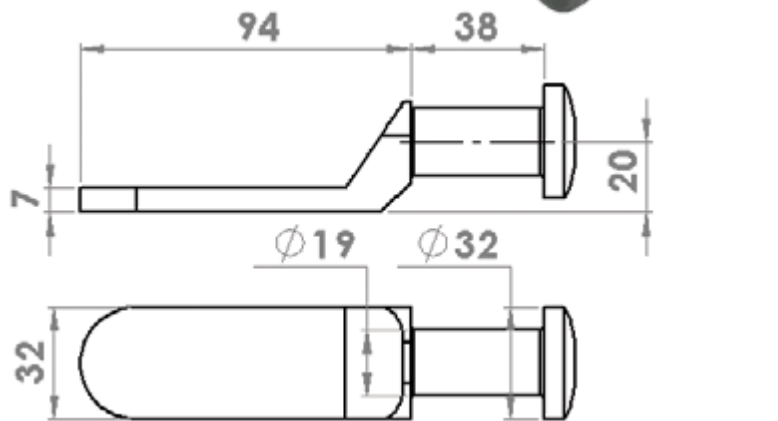
Model No BCP4048/001

Tailboard Lug

Supplied in: Mild steel self colour

Use: Weld on tailboard lug for use with BCP3987/002, 003, 004 or BCP17037 and BCP15063

Weight: 320 g



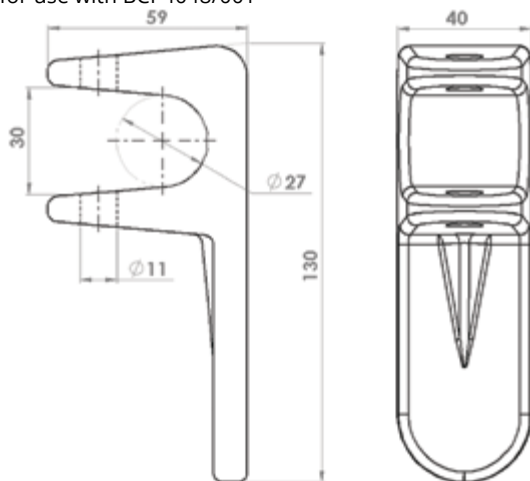
Model No BCP17037

Forklet

Supplied in: Mild steel self colour

Use: Weld on forklet for use with BCP4048/001

Weight: 760 g



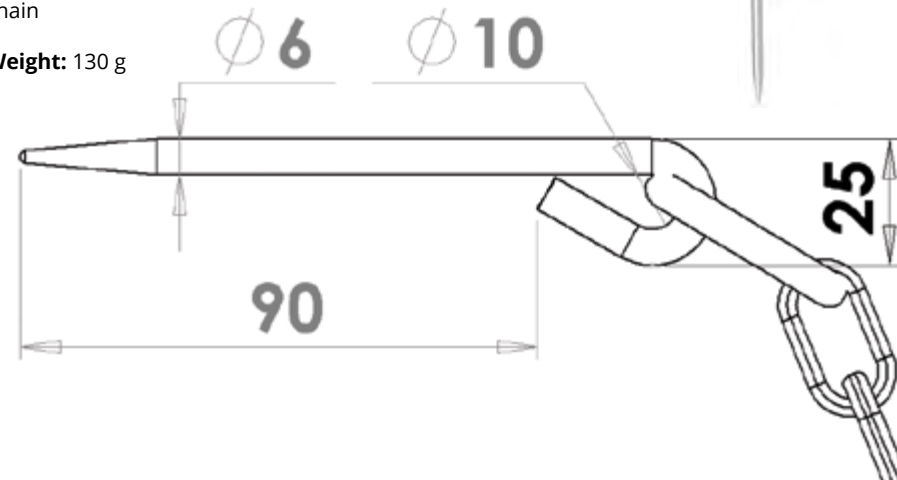
Model No BCP15063

Cotter Pin

Supplied in: Mild steel zinc plated

Use: General purpose pin supplied with Ø32mm ring and 189mm of chain

Weight: 130 g



Model No BCP14511

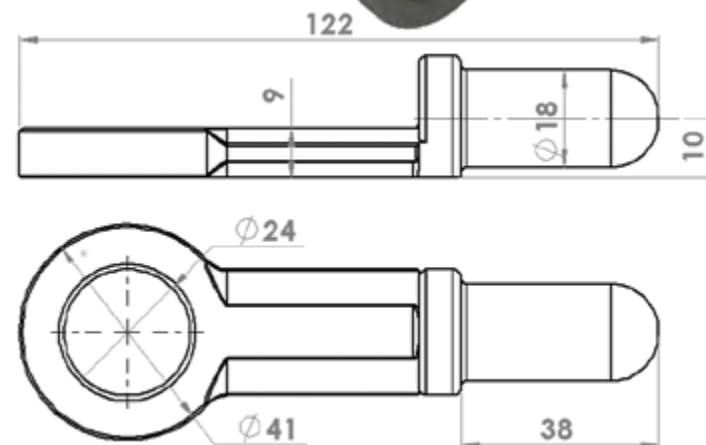
Gudgeon Pin

Supplied in: Mild steel self colour

Use: Along with BCP17022 to secure tailboard lugs etc.

Can also be used with Ø22, Ø27 & Ø34mm tube to make vehicle tubular retention or fall rails, container door stays or telescopic and fixed load poles.

Weight: 220 g

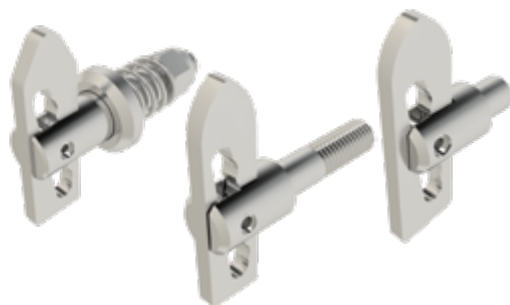


Model No See Table Anti-Luce Fasteners

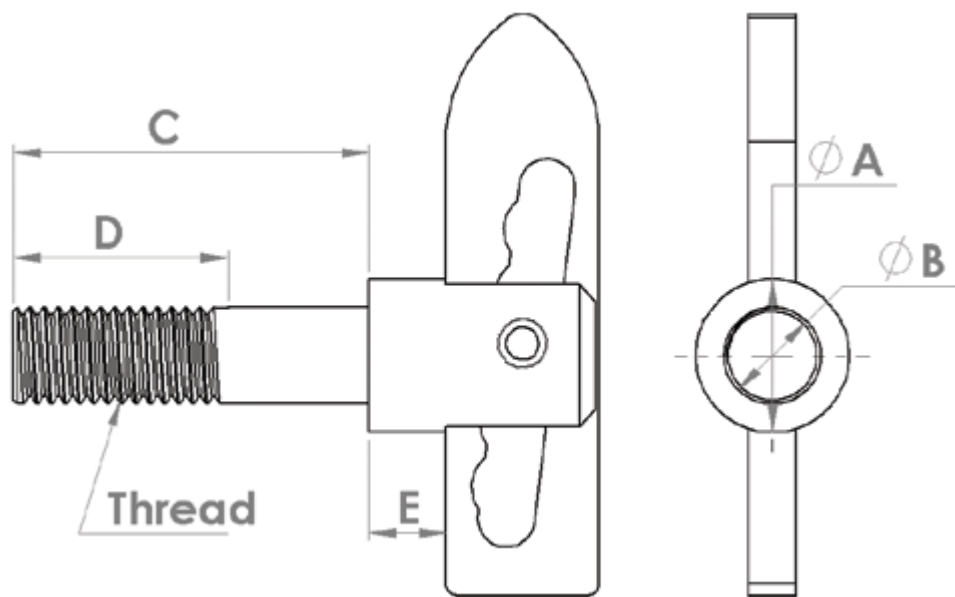
Supplied in: Mild steel zinc plated

Use: To secure trailer or vehicle drop sides, used with BCP14511 gudgeon pins and eye plates etc

Weight: see table



Part No	Ø A	Ø B/Thread	C	D	E	Weight
BCP3274-001	12	8/weld on	9.5	N/A	6.4	30 g
BCP15093	12	8/M8	21	20	6	40 g
BCP3265-032	12	8/M8	38	35	6.5	48 g
BCP3232/001	19	12/weld on	12.5	N/A	6.4	90 g
BCP3263-001	19	12/M12	25	20	6	90 g
BCP17022	19	12/M12	44	25	9.5	120 g
BCP3309-001	19	12/M12	89	51	14	160 g
BCP20032	19	1/2" UNF	23	23	spring loaded	192 g

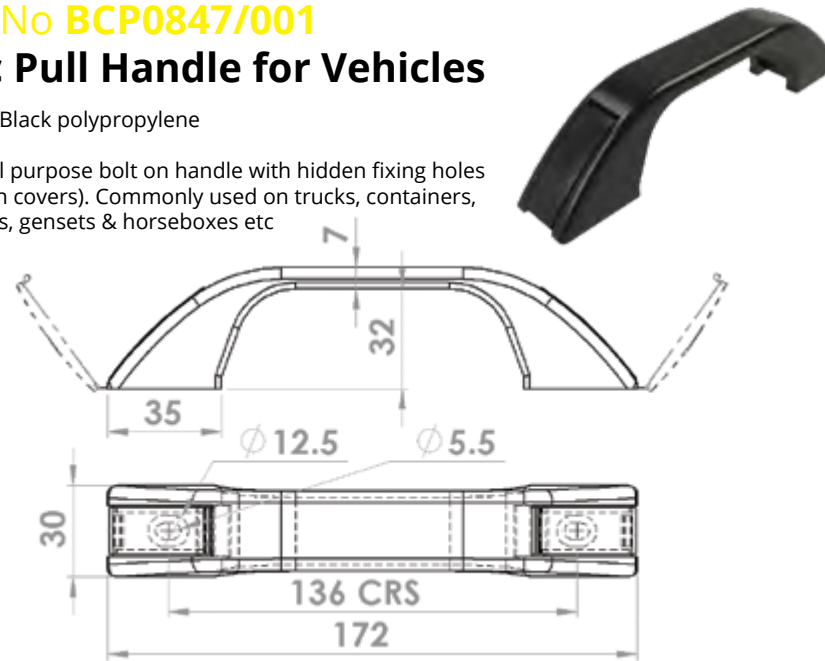


Model No BCP0847/001 Plastic Pull Handle for Vehicles

Supplied in: Black polypropylene

Use: General purpose bolt on handle with hidden fixing holes (hinged clip in covers). Commonly used on trucks, containers, trailers, buses, gensets & horseboxes etc

Weight: 45 g

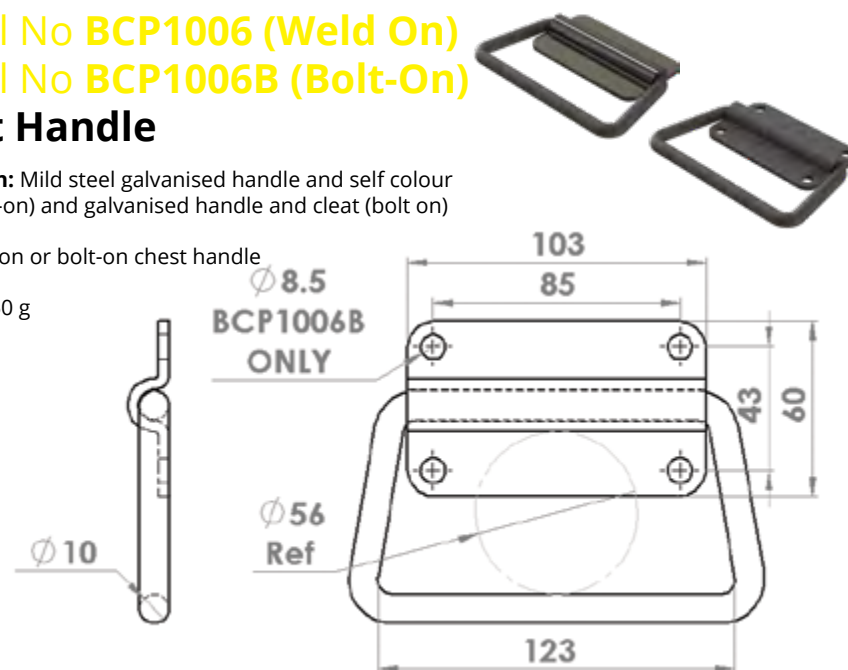


Model No BCP1006 (Weld On) Model No BCP1006B (Bolt-On) Chest Handle

Supplied in: Mild steel galvanised handle and self colour cleat (weld-on) and galvanised handle and cleat (bolt on)

Use: Weld-on or bolt-on chest handle

Weight: 450 g



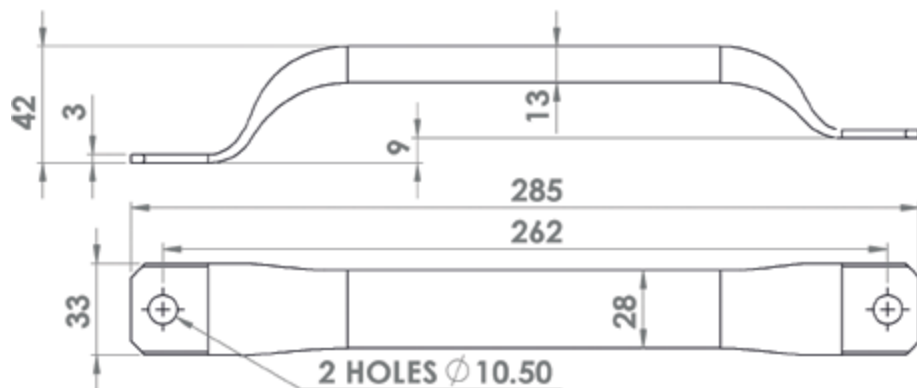
Model No BCSP12270

Grab Handles

Supplied in: Stainless steel, polished

Use: Pressed tubular grab handle for use on commercial vehicles and containers, but with many other applications

Weight: 228 g



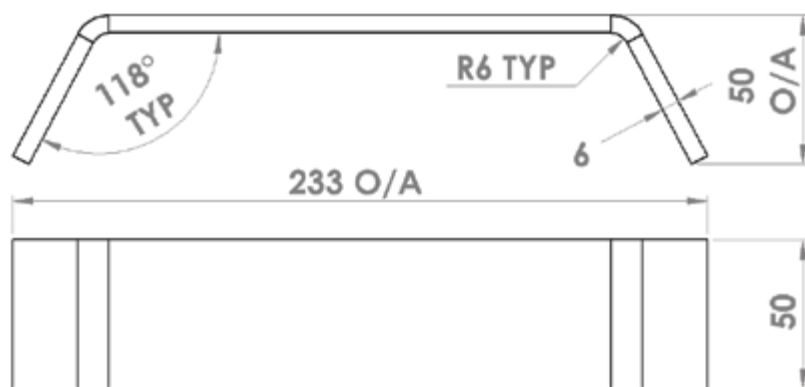
Model No BCP19054

Standard Container Door Handle

Supplied in: Mild steel self colour

Use: General purpose weld on standard container door opening handle. Can be fitted on its own but is usually fully welded against a bumper bar for protection.

Weight: 655 g



Model No BCP19055 (25mm)

Model No BCP19056 (35mm)

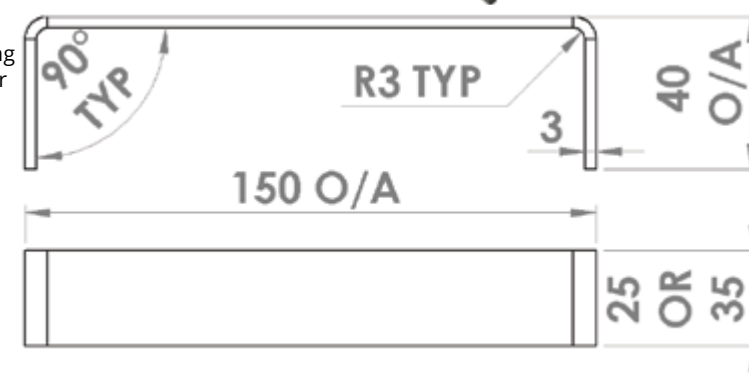
Recessed Container Door Handle

Supplied in: Mild steel self colour

Use: General purpose weld on recessed container door handle. Designed to be welded into RHS 50 X 30 or 60 X 40 bumper bars to provide a recessed handle for assisting with opening and closing container doors.

Other sizes available on request.

Weight: 129/181 g



Model No BCP22035 (Mild Steel)

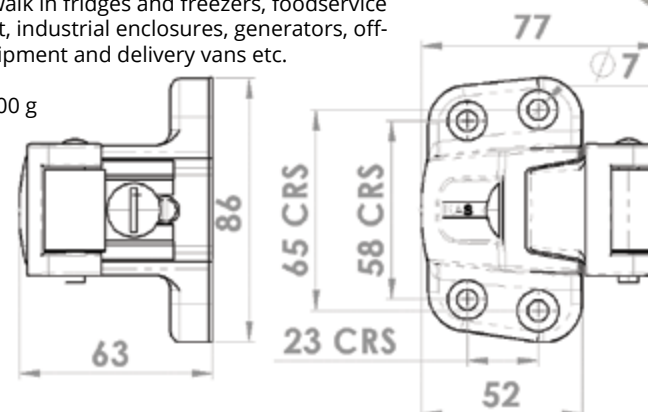
Model No BCSP22035 (Stainless Steel)

Walk-In Heavy Duty Latch Strike

Supplied in: High pressure die-cast zinc body (black powder coated) or satin finish 316 stainless steel

Use: On walk in fridges and freezers, foodservice equipment, industrial enclosures, generators, off-shore equipment and delivery vans etc.

Weight: 500 g



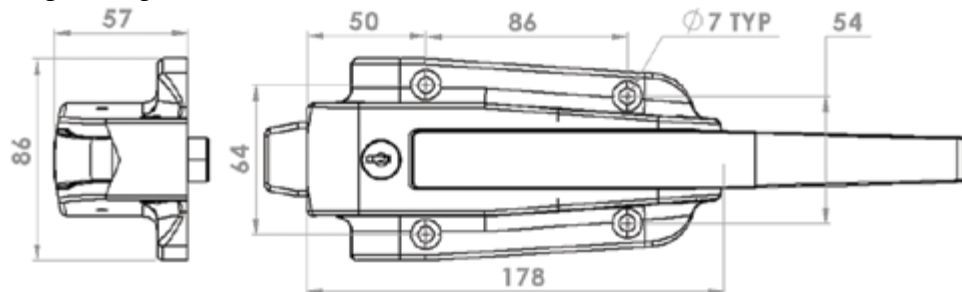
Model No BCP22034 (Mild Steel) Model No BCSP22034 (Stainless Steel)

Walk-In Heavy Duty Latch

Supplied in: High pressure die-cast zinc body (black powder coated) and strike housing, with stainless steel handle or satin finish 316 stainless steel

Use: On walk in fridges and freezers, foodservice equipment, industrial enclosures, generators, offshore equipment and delivery vans etc.

Weight: 2.3 kg



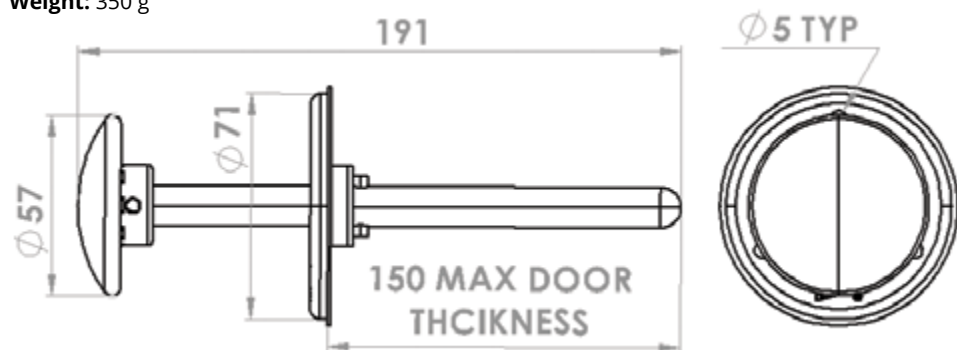
Model No BCSP22036 (Stainless Steel)

Walk-In Inside Safety Release

Supplied in: 316 stainless steel rod and flange, with glow in the dark plastic knob

Use: On walk in fridges and freezers, foodservice equipment, industrial enclosures, generators, off-shore equipment and delivery vans etc.

Weight: 350 g



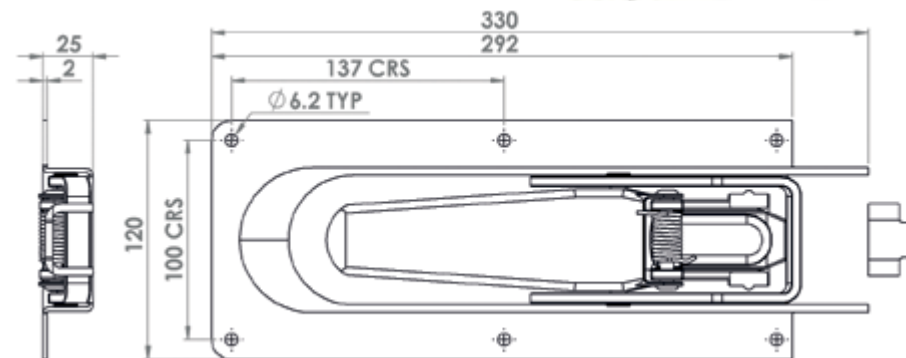
Model No BCP14331

Over-Centre Lock c/w Fixing Lug

Supplied in: Mild steel zinc plated

Use: To secure trailer or vehicle drop sides

Weight: 1.4 kg



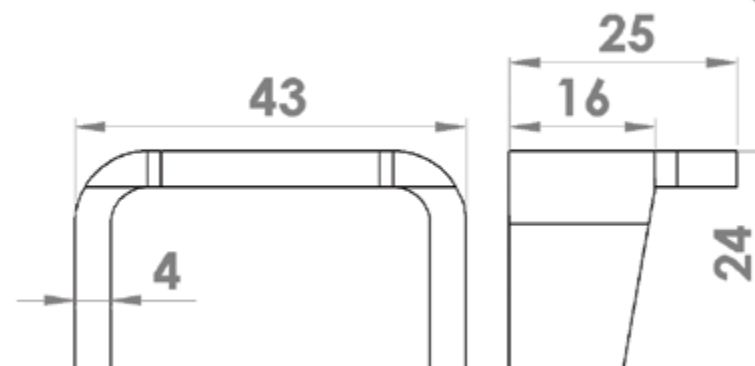
Model No BCP19027

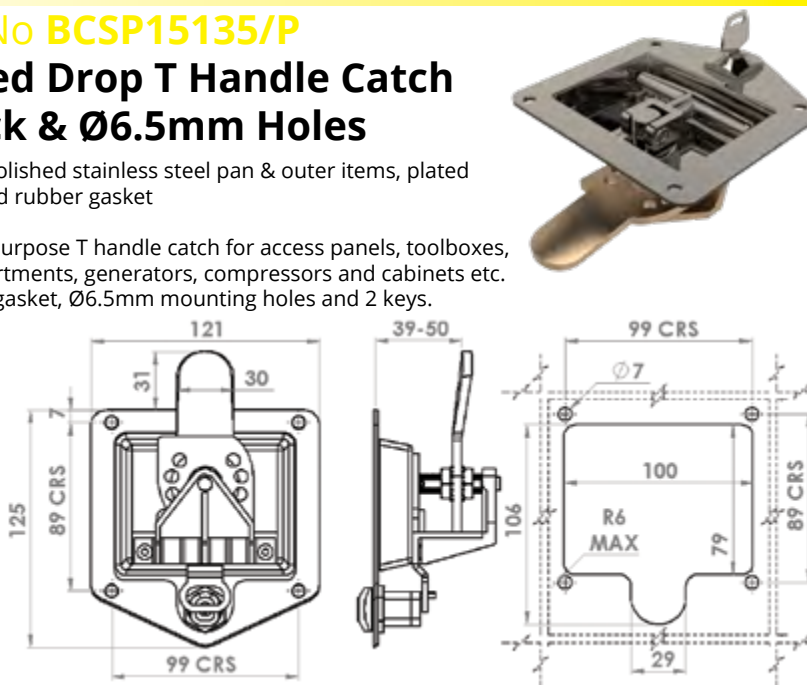
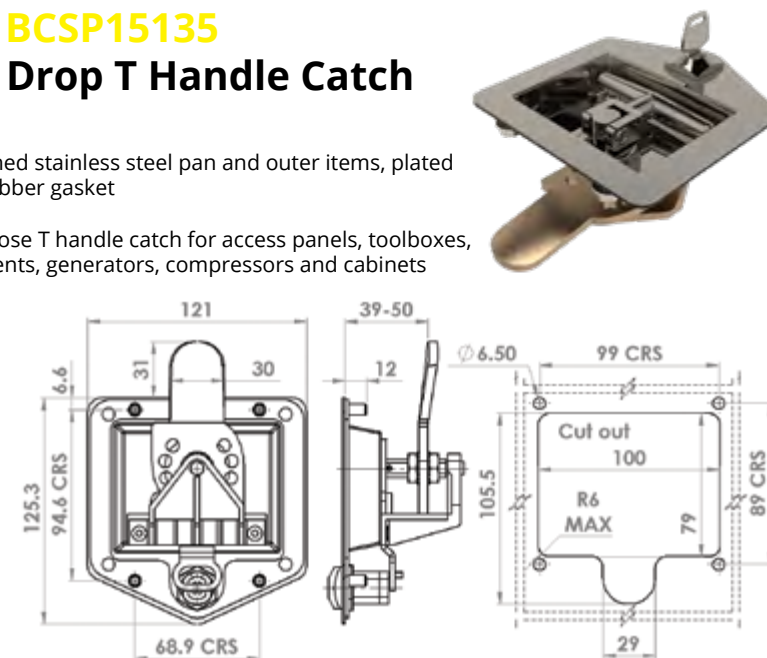
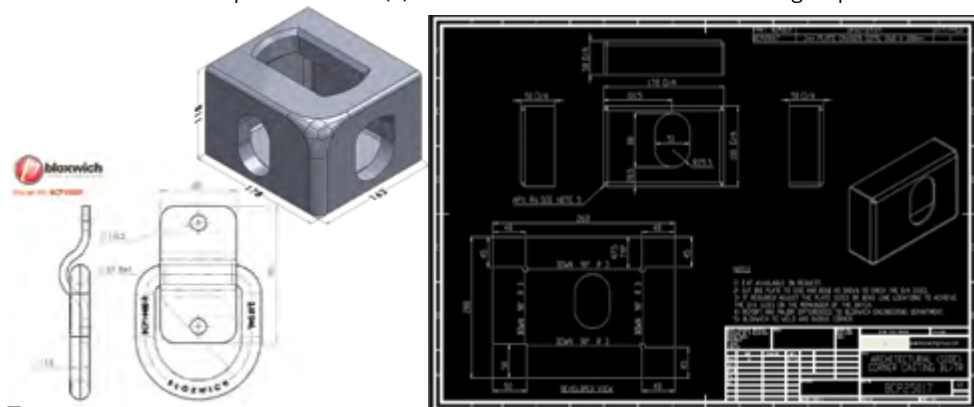
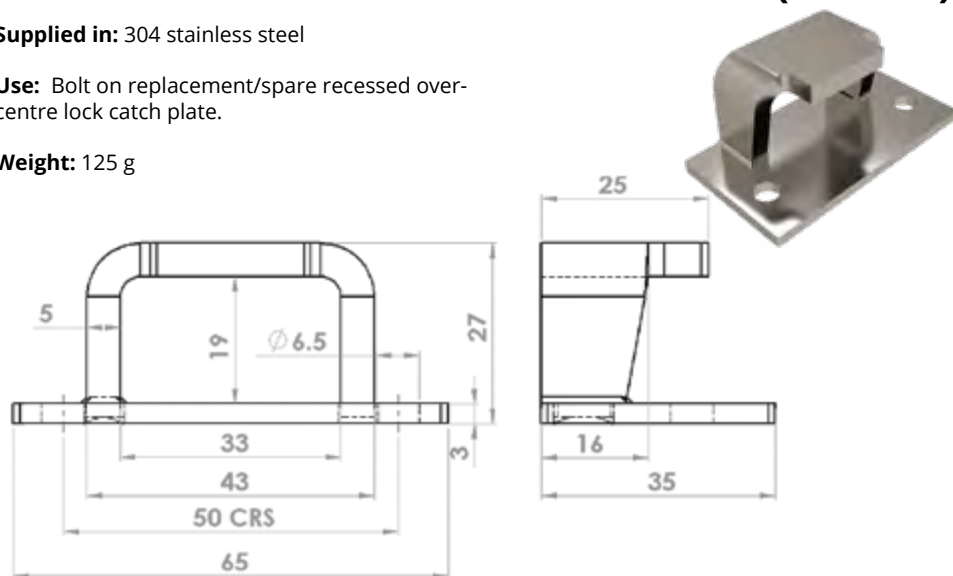
Recessed Over-Centre Lock Catch Plate

Supplied in: Mild steel, self colour

Use: Replacement/spare recessed over-centre lock catch plate.

Weight: 43 g





Model No BCSP16003

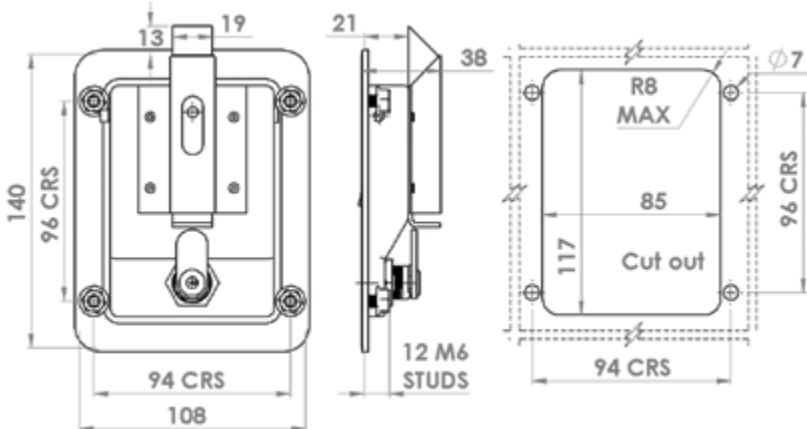
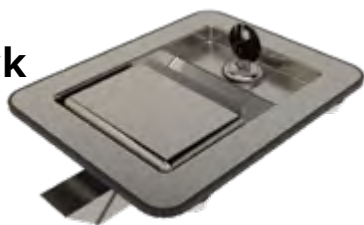
Recessed Paddle Catch c/w lock

Supplied in: Polished stainless steel pan and outer items, plated inner items and rubber gasket

Use: General purpose paddle catch for access panels and cabinets etc. Supplied with gasket, M6 mounting studs, nuts and 2 keys.

Other versions available on request.

Weight: 575 g



Model No BCSP16003/P

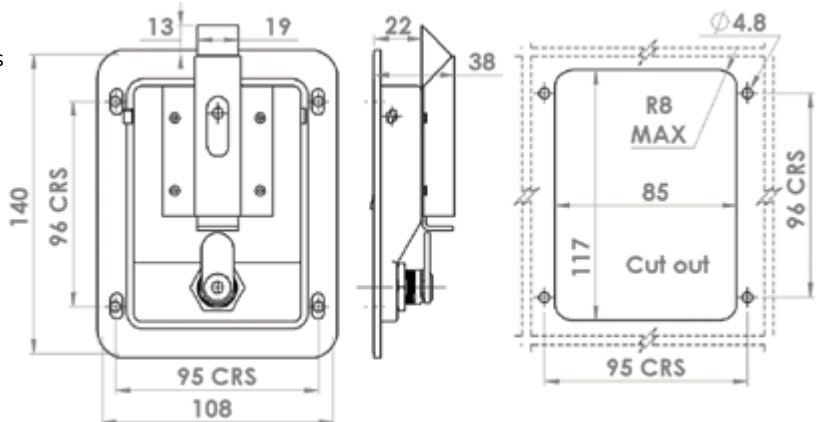
Recessed Paddle Catch c/w lock

Supplied in: Polished stainless steel pan and outer items, plated inner items and rubber gasket

Use: General purpose paddle catch for access panels and cabinets etc. Supplied with gasket, Ø4.8mm mounting holes and 2 keys.

Other versions available on request

Weight: 575 g



Model No BCP14288

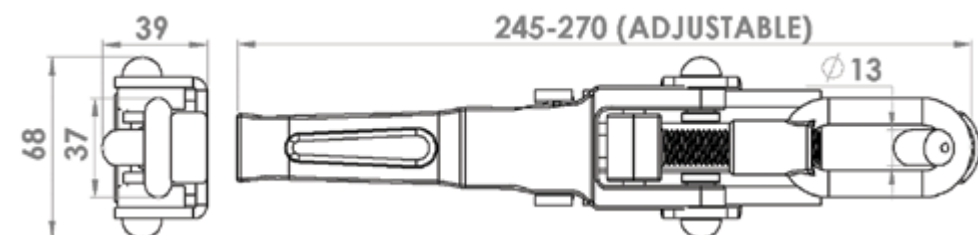
Eccentric Over-Centre Latch

SWL: 2.5 tonnes*

Supplied in: Mild steel self colour

Use: High strength weld on design eccentric over-centre latch and catch. Adjustable from 245 to 270mm. Finger release safety catch on the handle. Commonly used on tippers & car trailers but other applications include lids, doors & hatches etc on containers

Weight: 1 kg



Model No BCP14288/1

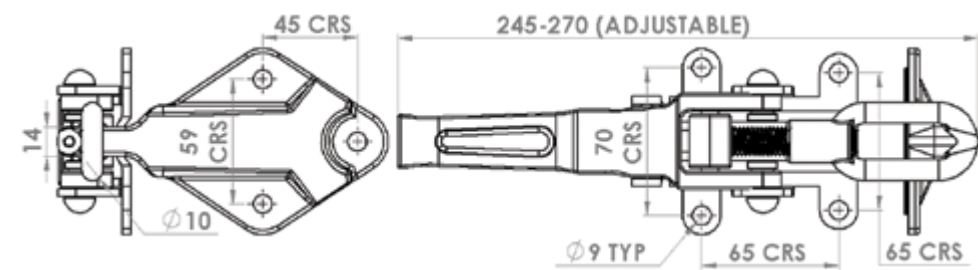
Eccentric Over-Centre Latch & Catch Bolt-On

SWL: 2.5 tonnes*

Supplied in: Mild steel galvanised

Use: High strength bolt-on design eccentric over-centre latch and catch. Adjustable from 245 to 270mm. Finger release safety catch on the handle. Commonly used on tippers & car trailers but other applications include lids, doors & hatches etc on containers

Weight: 1.4 kg



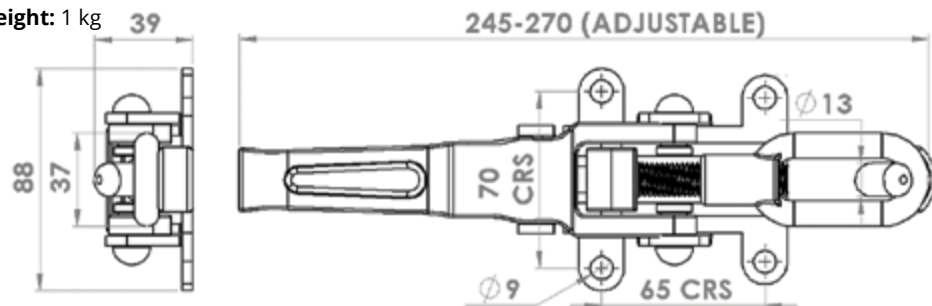
Model No BCP14288/2 Eccentric Over-Centre Latch Bolt-On & Catch

SWL: 2.5 tonnes*

Supplied in: Mild steel galvanised latch & self colour catch

Use: High strength bolt-on design eccentric over-centre latch and catch (weld on). Adjustable from 245 to 270mm. Finger release safety catch on the handle. Commonly used on tippers & car trailers but other applications include lids, doors & hatches etc on containers

Weight: 1 kg



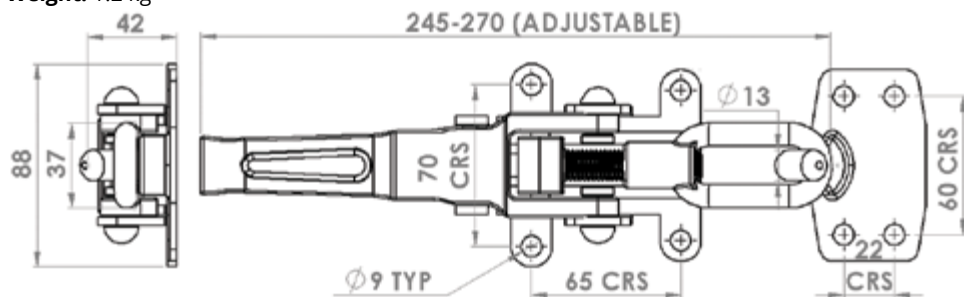
Model No BCP14288/3 Eccentric Over-Centre Latch & Catch Bolt-On (Side Mount)

SWL: 2.5 tonnes*

Supplied in: Mild steel galvanised

Use: High strength bolt-on design eccentric over-centre latch and catch. Adjustable from 245 to 270mm. Finger release safety catch on the handle. Commonly used on tippers & car trailers but other applications include lids, doors & hatches etc on containers

Weight: 1.2 kg



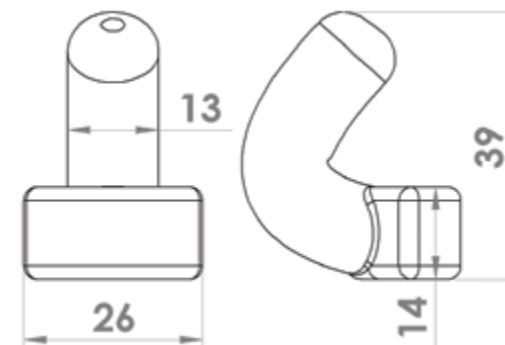
Model No BCP19043 Over-Centre Lock Retainer Catch

SWL: 2.5 tonnes*

Supplied in: Mild steel, self colour

Use: Spare/replacement or additional retainer catch for Bloxwich BCP14288 and BCP14288/2 eccentric over-centre latches. Can also be used as a heavy duty hook or to attach lanyard or chain ends etc to equipment.

Weight: 70 g



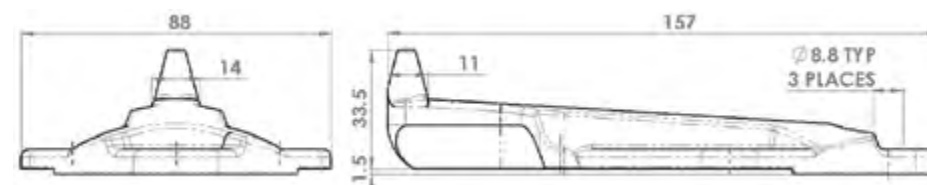
Model No BCP20099 Bolt On Over-Centre Lock Retainer Catch

SWL: 2.5 tonnes*

Supplied in: Mild steel, galvanised

Use: Spare/replacement/alternative or additional bolt on retainer catch for Bloxwich BCP14288, BCP14288/2 and BCP14288/3 eccentric over-centre latches. Can also be used as a heavy duty hook or to attach lanyard or chain ends etc to equipment.

Weight: 435 g



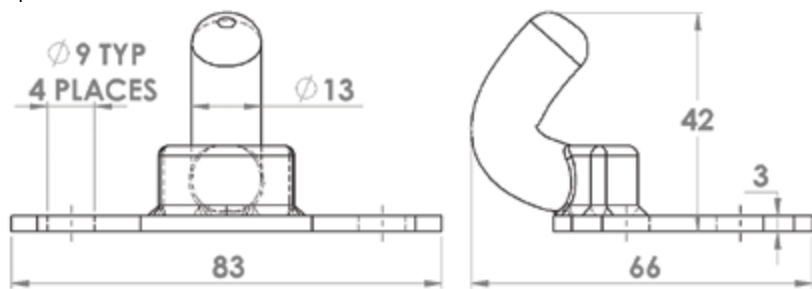
Model No BCP21024 Bolt On Over-Centre Lock Retainer Catch

SWL: 2.5 tonnes*

Supplied in: Mild steel, galvanised

Use: Spare/replacement/alternative or additional bolt on retainer catch for Bloxwich w/1, BCP14288/2 and BCP14288/3 eccentric over-centre latches. Can also be used as a heavy duty hook or to attach lanyard or chain ends etc to equipment.

Weight: 160 g

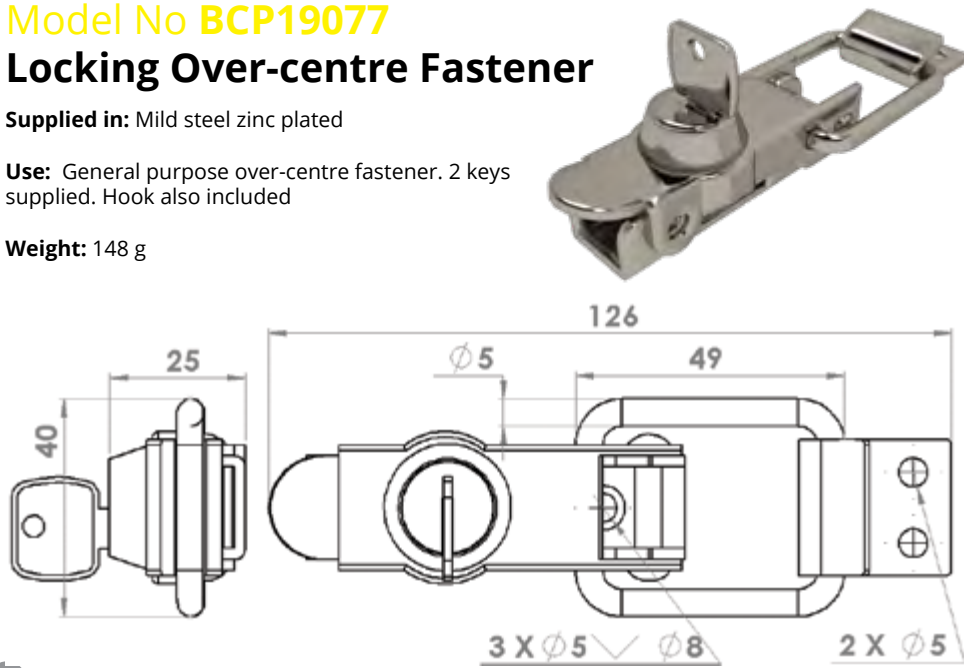


Model No BCP19077 Locking Over-centre Fastener

Supplied in: Mild steel zinc plated

Use: General purpose over-centre fastener. 2 keys supplied. Hook also included

Weight: 148 g

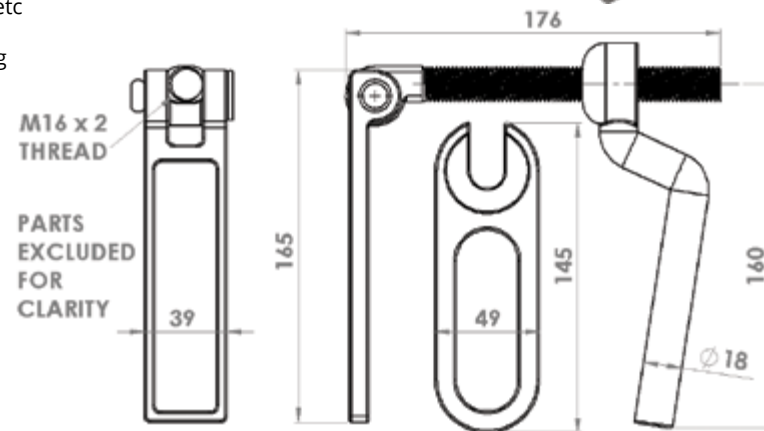


Model No BCP19078 Ramp Fastener Assembly M16

Supplied in: Mild steel self colour

Use: General purpose ramp fastener assembly for use in securing ramps or vehicle sides. Can also be used like a swingbolt to secure and clamp lids and hatch covers etc

Weight: 1.7 kg



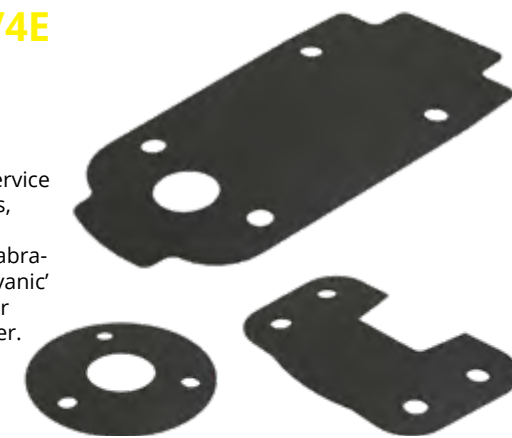
Model No BCP20102/3/4E Walk-In Gaskets

Supplied in: 1mm EPDM Rubber

Use: On walk in fridges and freezers, foodservice equipment, industrial enclosures, generators, offshore equipment and delivery vans etc to prevent door componentry from 'in service' abrasion with the door surface, and possible 'galvanic' corrosion encountered when some dissimilar materials are in direct contact with each other.

Others sizes available on request

Weight: See table



Model	Desc	Use With	Weight
BCP20102E	Walk-In Heavy Duty Latch Gasket	BC(S)P22034	14 g
BCP20103E	Walk-In Heavy Duty Strike Gasket	BC(S)P22035	4 g
BCP20104E	Walk-In Inside Safety Release Gasket	BCSP22036	4 g

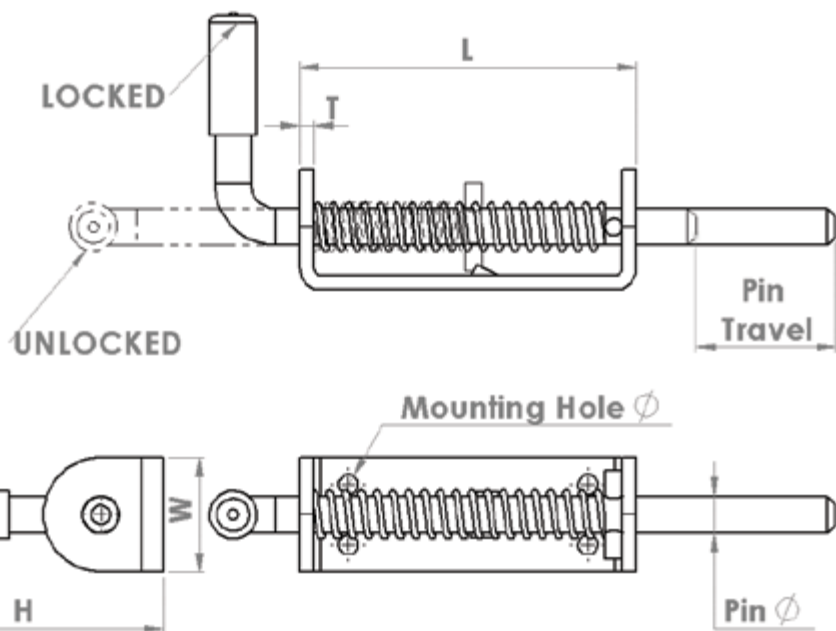
Model No See Table Spring Bolts

Supplied in: Mild steel zinc plated

Use: General purpose spring bolts for gates and doors etc.

Other types and sizes available on request

Weight: See table



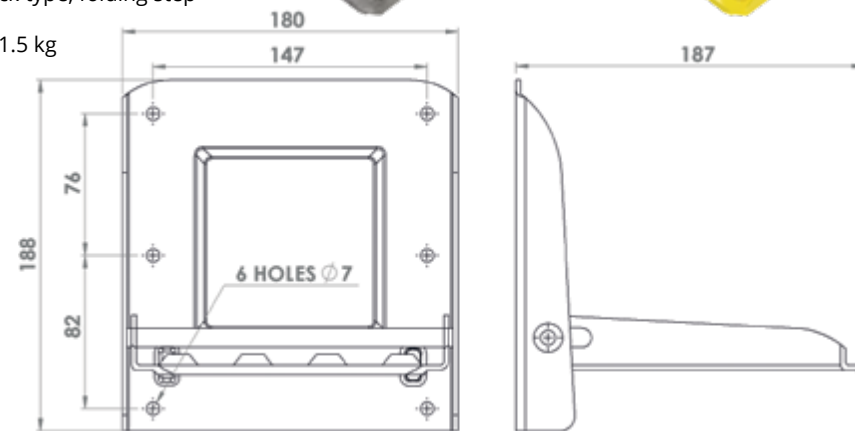
Model	L	W	H	T	Mounting Hole Ø	Pin Ø	Pin Travel	Weight
BCP20030	73	40	58	3	6.7	10	34	210 g
BCP14432	118	40	94	5	7	1/2"	51	548 g
BCP20031	141	41	174	5	6.2	16	63	967 g

Model No BCP14298 Folding Step

Supplied in: Mild steel zinc plated, galvanised or powder coated yellow.

Use: General purpose bolt-on design, pin lift lock type, folding step

Weight: 1.5 kg

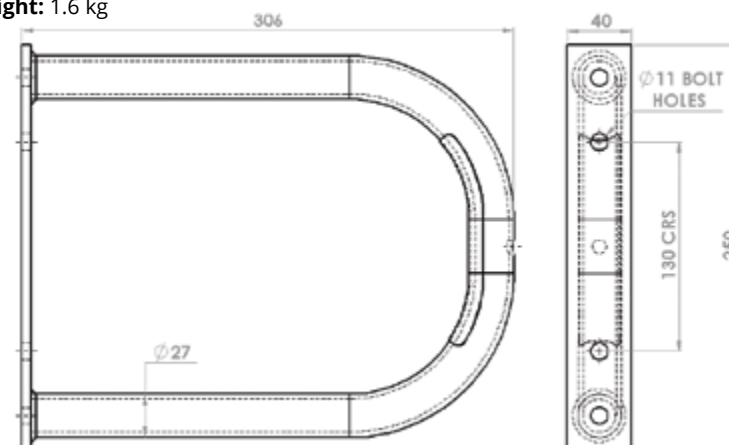


Model No BCP17011 Stirrup Step

Supplied in: Mild steel galvanised

Use: Single stirrup step, fasteners not supplied

Weight: 1.6 kg



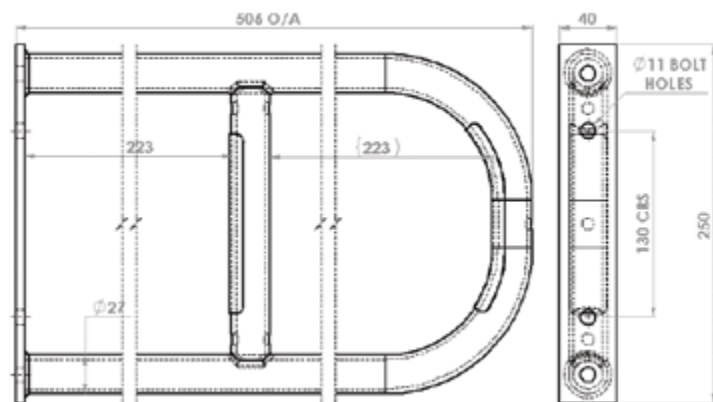
Model No BCP17012

Stirrup Step

Supplied in: Mild steel galvanised

Use: Double stirrup step, fasteners not supplied

Weight: 2.6 kg



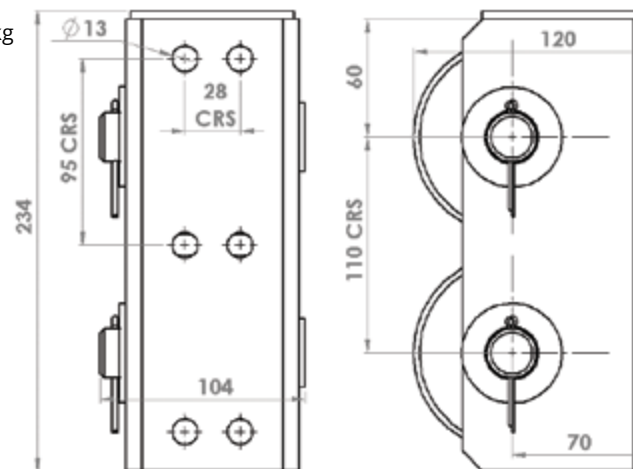
Model No BCP17020

Vertical Roller Buffer

Supplied in: Mild steel galvanised

Use: Bolt on vertical double roller buffer, fasteners not supplied

Weight: 5.3 kg



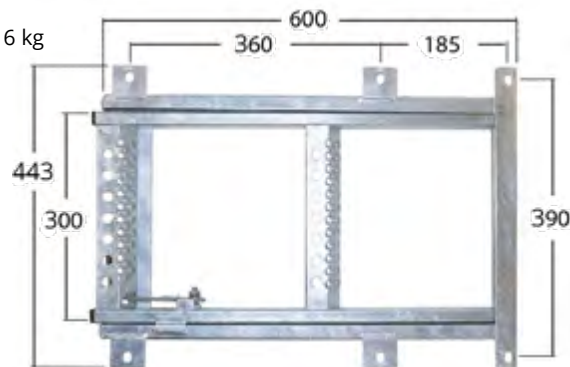
Model No BCP24025G

Access Step, Pull Out, 2 Rung (No Platform)

Supplied in: Mild steel galvanised

Use: Two rung pull out and fold down step, commonly fitted to the rear or sides of trucks and trailers to make climbing up and down much easier. Safe working load 136 kg (rated on the bottom rung), spring assisted latch for secure stowage when not in use and six fixing points (14.5 x 10mm slots). Fasteners sold separately.

Weight: 6 kg



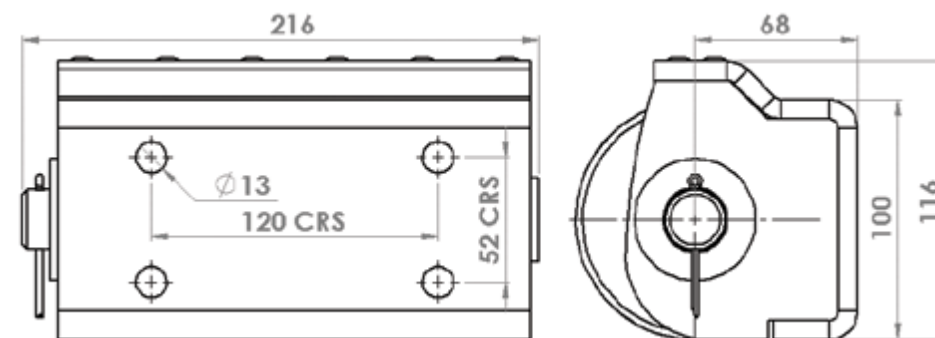
Model No BCP17021

Horizontal Roller Buffer

Supplied in: Mild steel galvanised

Use: Bolt on horizontal double roller buffer, fasteners not supplied

Weight: 6.0 kg

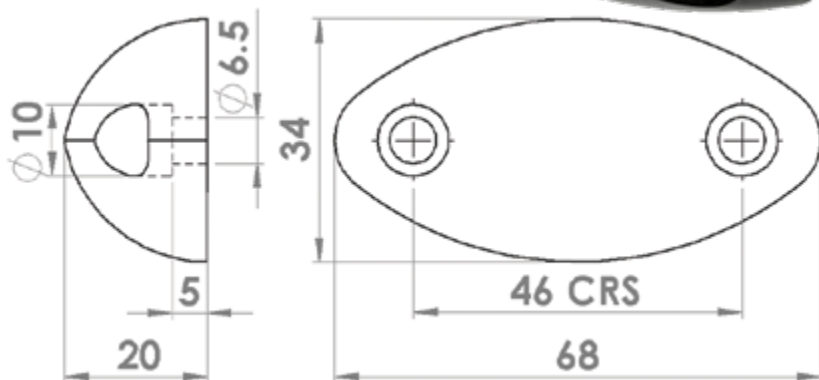


Model No BCP19072 Oval Buffer Standard Type

Supplied in: Synthetic rubber (black)

Use: Solid construction bolt on oval shaped buffer commonly fitted to doors to prevent impact damage on corresponding surfaces when the doors are opened

Weight: 30 g



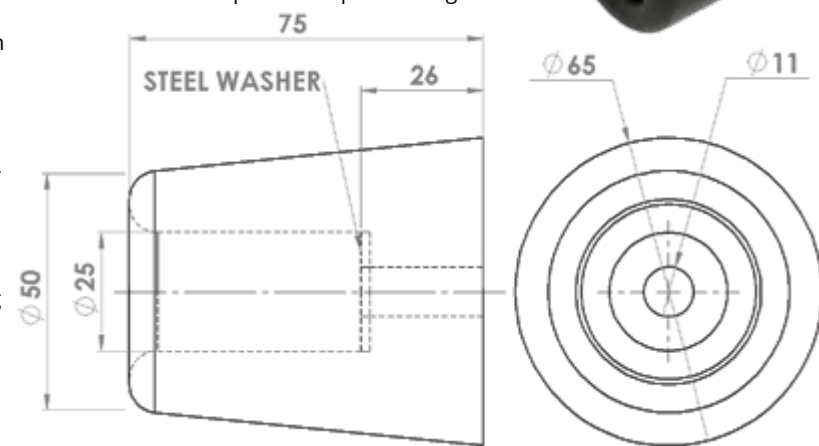
Model No BCP19081 Conical Buffer

Supplied in: Synthetic rubber (black)

Use: Solid construction bolt on conical buffer medium duty. Commonly fitted to refrigerated vehicle doors to prevent impact damage on corresponding surfaces when the doors are opened.

Steel washer insert increases strength and prevents tear off

Weight: 260 g



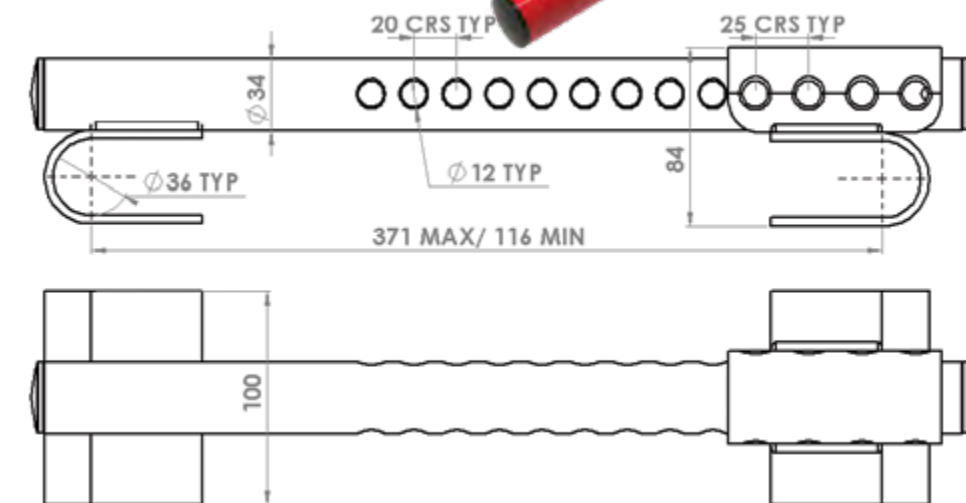
Model No BCP13903 Trailer Door Lock

Supplied in: Mild steel powder coated (red or yellow). Includes Bloxwich clean bag BCP19041 for storage in cabs

Use: Provides additional door security on commercial vehicles and containers fitted with Ø27mm or Ø34mm door gear (BCP19045 padlock supplied separately).

Easy fit design as the two halves separate to fit round the door gear tubes before sliding together and fitting a padlock.

Weight: 2.4 kg



Model No BCP15083

Container Lock

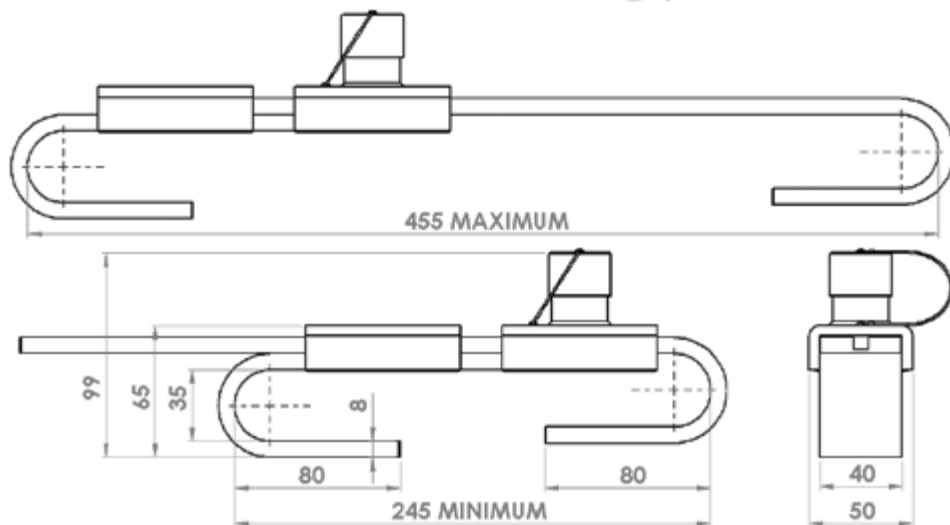
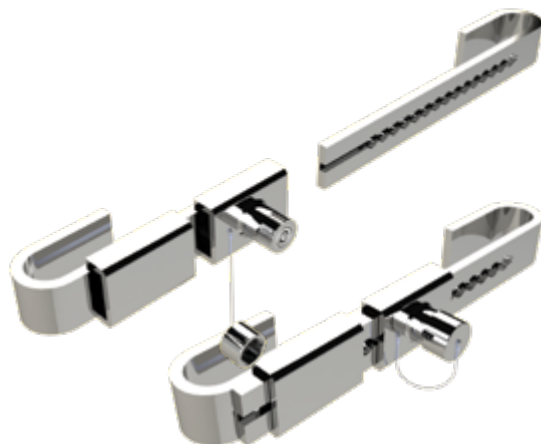
Supplied in: Mild steel zinc plated

Use: Provides additional door gear security on commercial vehicles and containers, supplied with two keys & lock cap c/w lanyard.

Suitable for Ø34 and Ø27mm door gear.

Lock separates into two halves to aid fitting.

Weight: 2.5 kg



Model No BCP13811

King Pin Lock

Supplied in: Red (weather protective coating)

Use: Specifically designed for Trailers

Simple push-button operation

Push-button, drill-proof lock

Protected against rusting

Flange prevents direct access to king pin flange nuts

Cleaner and friendlier to use – internally ribbed to absorb grease

Both king pin bodies and locks are sequentially numbered and supplied with 2 keys.

Replacement keys are available to original purchaser only, on confirmation of serial number

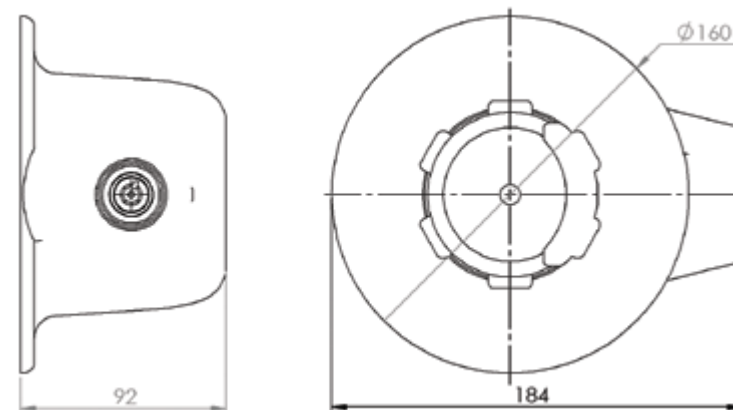
Standard individual locks (to differ), 10,000 possible combinations

For group haulage (suite of keys - to pass) call our sales team

Weight: 3.5 kg

To Fit: 1) Raise to cover king pin completely. 2) Push in lock button to secure.

To Remove: Support lock firmly with one hand. Turn key to release lock button and lower lock from trailer.



Model No BCP16035 Veloc King Pin Lock

Supplied in: Red (weather protective coating)

Use: Specifically designed for Trailers

Simple push-button operation

Push-button, drill-proof lock

Protected against rusting

Cleaner and friendlier to use

Both King Pin Bodies and Locks are sequentially numbered and supplied with 2 keys.

Replacement keys are available to original purchaser only, on confirmation of serial number

Standard individual locks (to differ),
10,000 possible combinations

For group haulage (suite of keys - to pass) call
our sales team

Weight: 1.7 kg

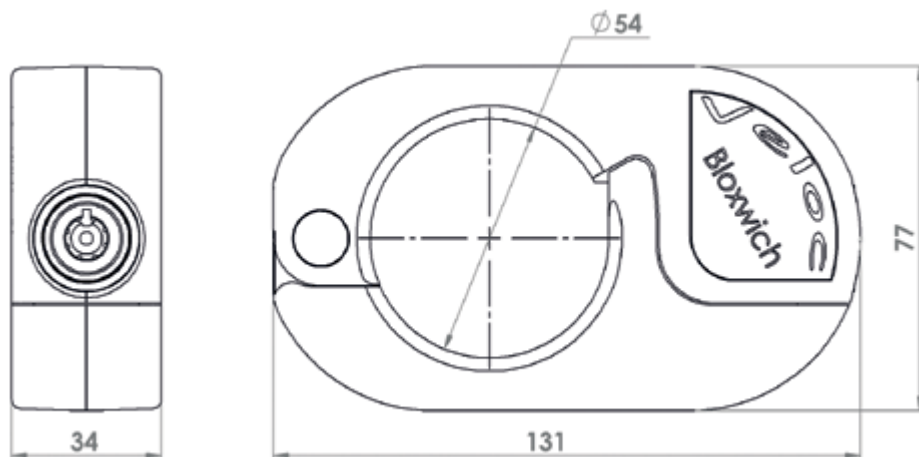


To Fit:

- 1) Fit Veloc around king pin.
- 2) Push in lock button to secure.

To Remove:

Support Veloc firmly with one hand.
Turn key to release lock button, open and lower
lock from trailer king pin.



Model No BCP14281 Ø40mm Anti-Hitch Lock (Eye Lock)

Supplied in: Red (weather protective coating)

Use: Trailer anti-hitch lock (eye lock)

Quick and easy to fit and legitimately remove

Hardened outer casings - resists sawing, drilling,
hammering etc

High security push lock (key required to unlock only)

Over 5,000,000 combinations

Low rounded non-grip profile to prevent attempted
tampering or unauthorised removal

Weight: 950 g

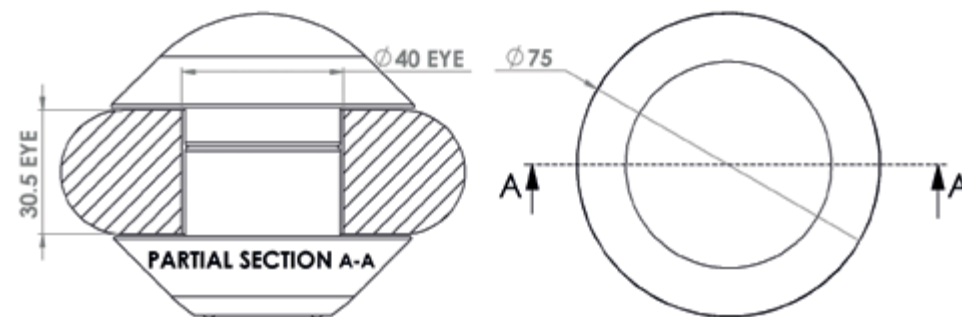
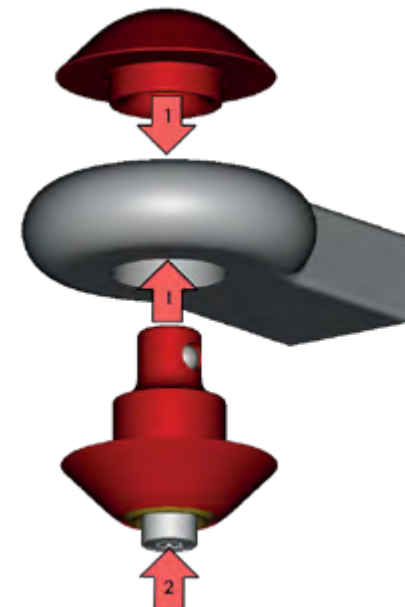
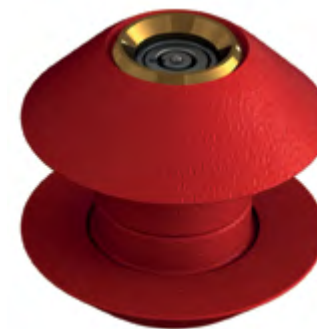
To Fit:

- 1) Fit both halves of the lock through the towing eye.
- 2) Push in lock button to secure.

To Remove:

Support lower half firmly with one hand.

Turn key to release lock button, remove both halves
from the towing eye.



Model No **BCP14305** Ø50mm

Model No **BCP17013** Ø57.5mm

Model No **BCP17014** Ø76mm

Anti-Hitch Lock (Eye Lock)

Supplied in: Red (weather protective coating)

Use: Trailer anti-hitch lock (eye lock)

Quick and easy to fit and legitimately remove

Hardened outer casings - resists sawing, drilling, hammering etc

High security push lock (key required to unlock only)

Over 5,000,000 combinations

Low rounded non-grip profile to prevent attempted tampering or unauthorised removal

Bolt on spacers are quickly changed to suit different eyes

Weight: 950 g/2.3 kg /2.0 kg

To Fit:

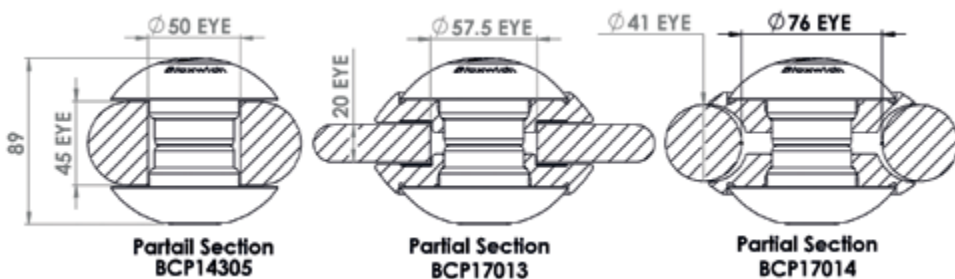
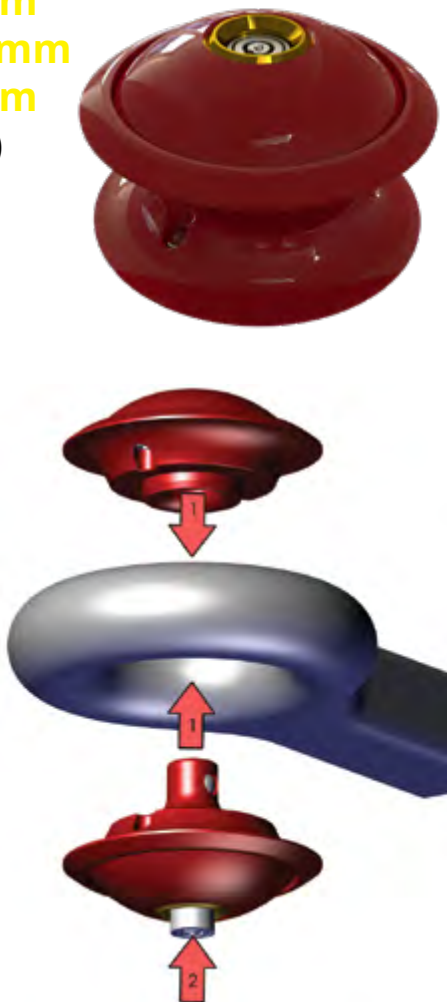
1) Fit both halves of the lock through the towing eye.

2) Push in lock button to secure.

To Remove:

Support lower half firmly with one hand.

Turn key to release lock button, remove both halves from the towing eye.



Model No **BCP19075**

Emergency Trailer Locking Kit

Supplied in: Powder coated (red or yellow). Includes Bloxwich clean bag BCP19041 for storage in cabs and a pair of BCP16022 nite star gloves to keep your hands clean.

Use: Keep one of these in your cab and should you need to leave your trailer somewhere in a hurry you can lock it securely, quickly and easily so your "good to go".



Kit Contents: BCP13903 trailer door lock, BCP16035 Veloc king pin lock, BCP19045 40mm Squire LN4/2.5KA Long Shackle Brass Padlock, BCP19041 Bloxwich clean bag long & BCP16022 gloves nite star black. Parts also available separately please see www.bloxwichdoorgear.com for full details

Weight: 4.4 kg

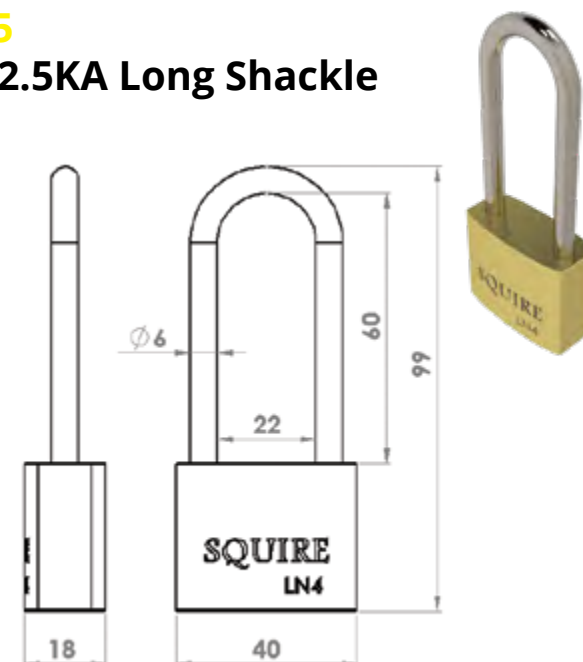
Model No **BCP19045**

40mm Squire LN4/2.5KA Long Shackle Brass Padlock

Supplied in: Solid brass body, double locking, pin tumbler lock mechanism with hardened steel long shackle for greater security. Suitable for internal and external use. 2 keys per padlock.

Use: General purpose long shackle padlock can also be used with BCP13903 trailer lock, container lock boxes and standard door handle retainers etc. Security rating 3 (standard security).

Weight: 220 g

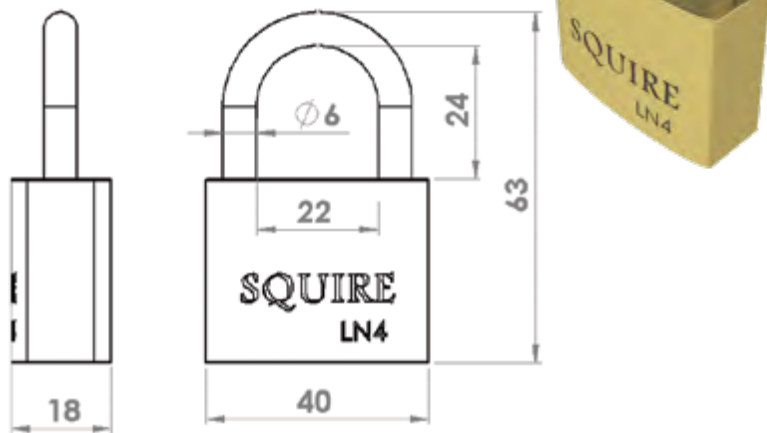


Model No BCP19044 40mm Squire LN4 Brass Padlock

Supplied in: Solid brass body, double locking, pin tumbler lock mechanism with hardened steel shackle for greater security. Suitable for internal and external use. 2 keys per padlock.

Use: General purpose padlock, can also be used with shipping container lock boxes and standard door handle retainers etc. Security rating 5 (extra security).

Weight: 205 g



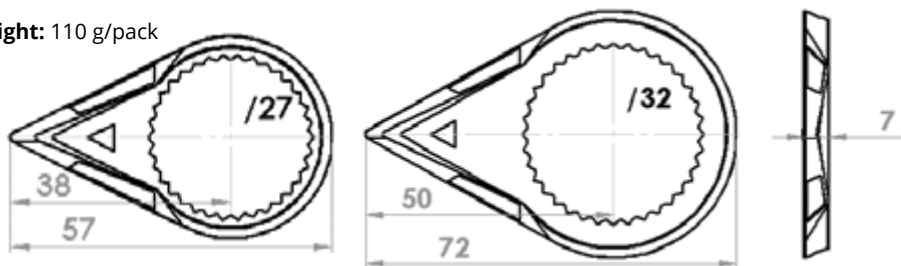
Model No BCP19073/** Standard Wheel Nut Indicator

Supplied in: Polypropylene (yellow) 50 per pack. 27mm (M18) and 32mm (M22) sizes available (are sized by measuring the width across the flats of the wheel nuts)

Use: Fitted after torquing and checking as per CPC regulations, WNI's provide a visual indication of whether or not the wheel nuts are safe. These have a melting point of 125°C and also provide a visual indication of overheating wheels caused by brake or bearing issues. Also embossed with clear size indication.

Other sizes, types and colours available on request.

Weight: 110 g/pack



Model No See Table Toolboxes

Supplied in: Rotationally moulded, medium-density black polyethylene

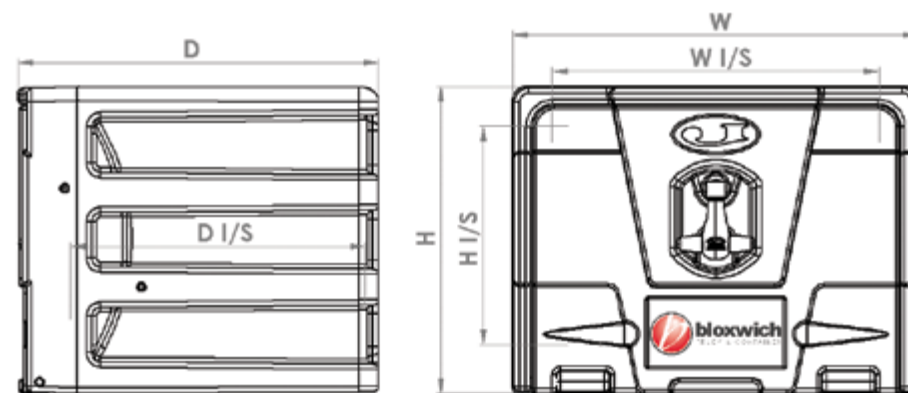
Use: Jonesco toolboxes for commercial vehicles and various other applications. Can be incorporated into a vehicles side-guard system in accordance with UNECE Regulation 73.

Other types and sizes available on request

Weight: See table



Model	H x W x D (mm)	I/S H x W x D (mm)	Handle	Weight	Max Weight	Capacity (ltr)	Fixing Kit
JBZ450	340x450x400	240x360x325	Single	4.5 kg	50 kg	41	-
JBZ520	320x520x360	220x430x290	Single	5.5 kg	50 kg	42	-
JBZ580	360x580x450	260x490x375	Single	5.5 kg	50 kg	64	-
JBZ600	450x600x480	350x505x408	Single	6.5 kg	58 kg	98	-
JBZ620	320x620x610	220x530x540	Single	7.0 kg	75 kg	88	TBK620
JBZ620A	320x620x400	220x530x334	Single	5.0 kg	50 kg	53	-
JBZ650	460x650x480	360x560x408	Single	7.5 kg	75 kg	106	TBK650
JBZ700	480x700x490	380x610x420	Double	8.0 kg	75 kg	132	TBK700
JBZ800	460x800x480	360x705x400	Double	9.0 kg	75 kg	136	TBK800
JBZ800A	460x800x360	360x705x280	Double	8.5 kg	75 kg	90	-
JBZ900	480x900x490	380x810x406	Double	11.0 kg	75 kg	172	TBK900
JBZ1000	460x1000x480	360x905x400	Double	12.5 kg	75 kg	167	TBK1000
JBZ1200	460x1190x480	360x1095x400	Double	14.0 kg	75 kg	201	TBK1200



Model No See Table Fixing Kits

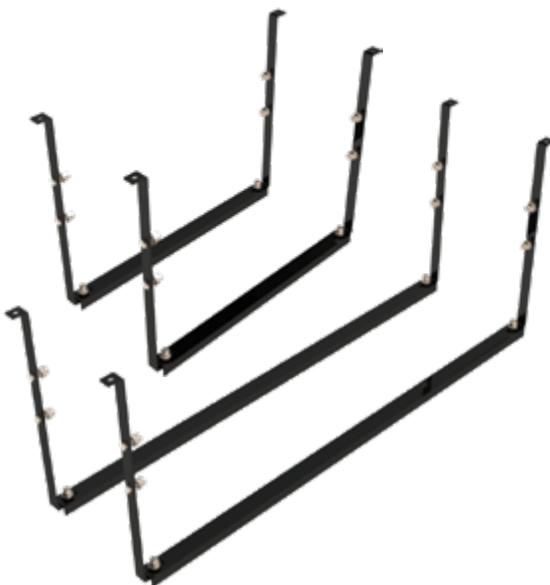
Supplied in: Mild steel zinc plated (black finish) with zinc plated fasteners.

Use: Fixing kits for use with our range Jonesco toolboxes for commercial vehicle and various other applications.

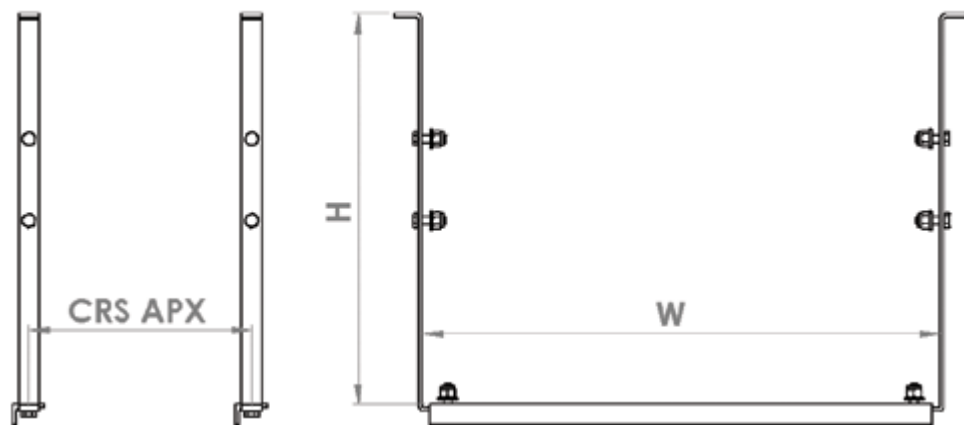
Can be incorporated into a vehicles side-guard system in accordance with UNECE Regulation 73.

Note: Not all toolboxes require fixing kits and some customers prefer to make their own fixing kits.

Weight: See table



Model	Use With Toolbox	H x W x CRS (mm)	Weight
TBK620	JBZ620	351 x 620 x 350	3.5 kg
TBK650	JBZ650	491 x 650 x 280	4.1 kg
TBK700	JBZ700	491 x 700 x 280	4.1 kg
TBK800	JBZ800	491 x 800 x 224	5.8 kg
TBK900	JBZ900	491 x 900 x 280	4.1 kg
TBK1000	JBZ1000	491 x 1000 x 286	6.0 kg
TBK1200	JBZ1200	460 x 1190 x 280	7.0 kg



Model No See Table Front Loading Fire Extinguisher Boxes

Supplied in: Rotationally moulded, medium-density black and or red polyethylene

Use: Jonesco front loading fire extinguisher boxes designed for quick access in emergency situations Can be incorporated into a vehicles side-guard system in accordance with UNECE Regulation 73.

X= Colour options: B: ● E: ●

Weight: See table



Model	Colour Options	Series	H x W x D (mm)	Weight	Extinguisher	Fixing Kit
JBTX68	● ●	68	680 x 260 x 260	3.5 kg	6 kg	-
JBWX70	● ●	70	700 x 320 x 255	4.0 kg	6 kg	KIT80
JBDX72	● ●	72	720 x 585 x 270	8.0 kg	9-12 kg	-
JBDX73	● ●	73	730 x 435 x 290	6.5 kg	12 kg	-
JBX83	● ●	83	830 x 320 x 265	5.5 kg	9-12 kg	KIT80

Model No See Table Top Loading Fire Extinguisher Boxes

Supplied in: Rotationally moulded, medium-density black and or red polyethylene

Use: Jonesco top loading fire extinguisher boxes designed for quick access in emergency situations Can be incorporated into a vehicles side-guard system in accordance with UNECE Regulation 73.

X= Colour options: B: ● R: ●

Weight: See table



Model	Colour Options	Series	H x W x D (mm)	Weight	Extinguisher	Max Ø (mm)	Max H (mm)	Fixing Kit
JBFX64	● ●	64	640 x 250 x 250	3.0 kg	6 kg	170	590	KIT65
JBFX65	● ●	65	650 x 260 x 275	3.5 kg	6 kg	180	600	KIT55/KIT56
JBFX75	● ●	75	750 x 300 x 300	6.5 kg	9-12 kg	230	710	KIT55/KIT56
JFEX03	● ●	JFE	415 x 210 x 145	1.0 kg	2 kg	-	-	-

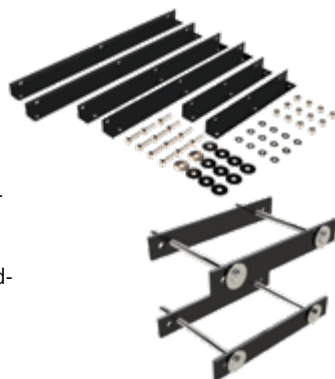
Model No See Table Fixing Kits

Supplied in: Mild steel zinc plated (black finish) with zinc plated fasteners.

Use: Fixing kits for use with our range Jonesco fire extinguisher boxes for commercial vehicle and various other applications.

Can be incorporated into a vehicles side-guard system in accordance with UNECE Regulation 73.

Weight: See table



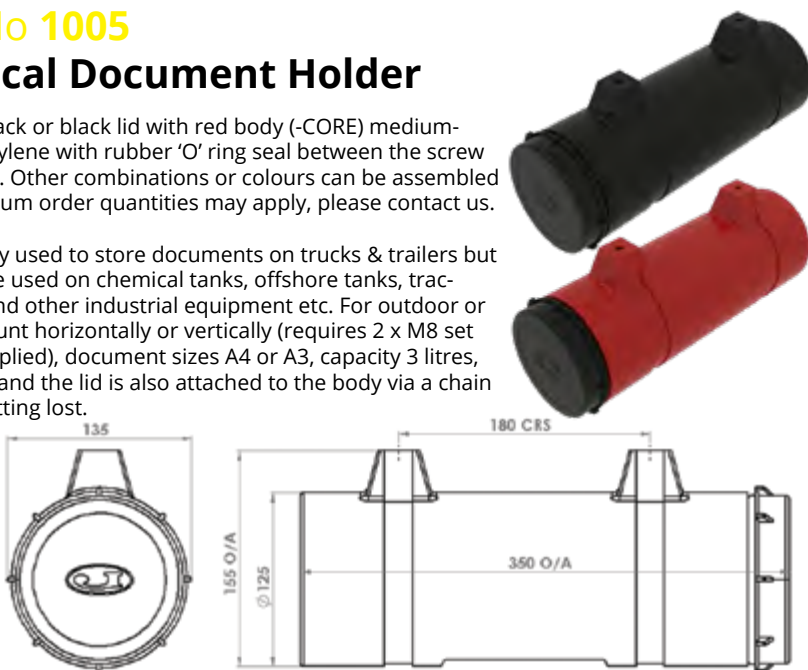
Model	Use With Box	Details	Weight
KIT55	JBFX65, JBFX75	Kit for mounting 65 and 75 series boxes at an angle of 30° or 60°	3.4 kg
KIT56	JBFX65, JBFX75	Kit for mounting 65 and 75 series boxes in a horizontal or vertical position.	1.4 kg
KIT65	JBFX64	Kit mounting 64 series to at an angle of 30° or 60°	2.0 kg
KIT80	JBW70, JBX83	Kit for mounting 70 and 83 series boxes to a landing leg. Suitable for 110 / 135 mm wide landing legs.	1.1 kg

Model No 1005 Cylindrical Document Holder

Supplied in: Black or black lid with red body (-CORE) medium-density polyethylene with rubber 'O' ring seal between the screw on lid and body. Other combinations or colours can be assembled to order. Minimum order quantities may apply, please contact us.

Use: Commonly used to store documents on trucks & trailers but they can also be used on chemical tanks, offshore tanks, tractors, forklifts, and other industrial equipment etc. For outdoor or indoor use, mount horizontally or vertically (requires 2 x M8 set screws, not supplied), document sizes A4 or A3, capacity 3 litres, fully recyclable and the lid is also attached to the body via a chain to prevent it getting lost.

Weight: 550 g

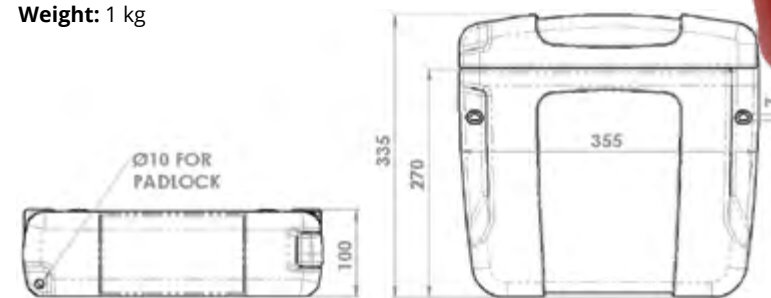


Model No 1006 Square Document Holder

Supplied in: Black or red (-CORE) medium-density polyethylene with 180° opening hinged tight fit snap on lid.

Use: Commonly used to store documents on trucks & trailers but they can also be used on chemical tanks, offshore tanks, tractors, forklifts, and other industrial equipment etc. For outdoor or indoor use, can be padlocked (not supplied), document sizes A4/Letter, also suitable for A4 folders, capacity 7 litres, easily fitted (requires 2 x M6 fasteners, not supplied), smooth areas for labels and its fully recyclable.

Weight: 1 kg



ISO/BS 9001:2015 Quality

At Bloxwich our quality management system is operating in accordance with ISO 9001: 2015.

For more information please call +44 (0)1543 435 160 or email sales@bloxwichgroup.com

