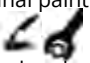
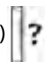


## Door Gear

The choice of door gear model depends on end frame and door design and the test requirements for the end wall and racking loads. We will be pleased to give detailed advice, but the following points should be considered:

- All the standard loose kits are listed (please contact us if you can't find the one you need)
- Weld on or bolt on brackets (bolt-on brackets can be fitted after final painting of the doors and if repairs are necessary, removal or replacement is simple) 
- The resistance to racking loads of bolt-on brackets depends on the bracket length and number of fixing holes
- Short length weld-on brackets give better resistance to racking loads than short bolt-on brackets
- Steel doors can be fitted with weld on or bolt on brackets. Ply/metal or GRP doors can only be fitted with bolt on brackets
- If racking forces are high, a combination of locking mechanisms with long and short brackets can be used
- The type of door seal fitted can dictate the required bracket type
- Variable height or variheight door gear is only available on Ø27mm door gear models (V) 
- Door gear can be mounted vertically or horizontally
- Right hand door gear models shown, left hand models are symmetrically opposite
- For more information and dimensions please visit [www.bloxwichdoorgear.com](http://www.bloxwichdoorgear.com)

If fully welded door gear is required, please contact us for further details and a lock rod chart as this will ensure your order is processed to your precise requirements.

Several of the door gear models shown in this catalogue are approved by Lloyds Register.

## Options

- Door gear can be supplied as loose parts (without tube) or fully welded for immediate fitting
- Top cam loose door gear is also available
- Material, **mild steel (e.g. BE2566M)** or **stainless steel (e.g. BS2566)**
- Tube diameters of Ø22 mm, Ø27 mm and Ø34 mm are available
- Standard, modified or ice breaker cams\* (see illustrations)
- Type of door handle or wraparound handle hub required\* (see illustrations)
- Weld on, bolt on and narrow base cams & keepers\*
- Finish, self colour, zinc plated or galvanised (e.g. /Z or /G)
- Un-bushed or bushed bearing brackets (bushes ensure smooth operation)

TCL



The most popular door gear models are shown in this catalogue, numerous other combinations can be supplied to meet the demands of our customers, please contact us for further details.

\*Not available on all models

## Cams\*

BCP10080 standard cam,



requires drain holes in the tube for galvanising top and bottom

BCP10080M modified cam,



no drain holes required in the tube for galvanising

BCP12442 ice breaker cam, additional cam



gives greater door opening movement to overcome frozen seals or stiff doors

BCP13506 seal cam



has Ø15mm hole for customs seal or padlock

22789 universal cam,



can be fitted to the top or bottom of door gear lockrods

BCP13604 narrow cam, can be fitted to the top or bottom of door gear

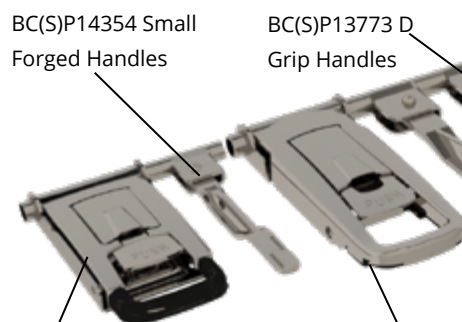


lockrods and eases fitting in limited spaces

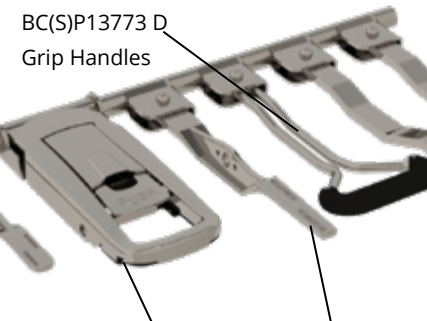
## Standard Handle Options\*

Bloxwich ©

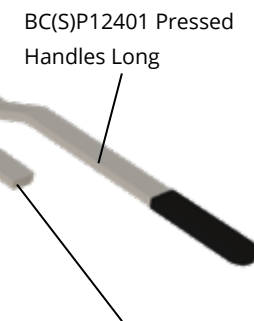
BC(S)P14354 Small Forged Handles



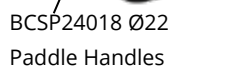
BC(S)P13773 D Grip Handles



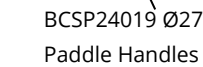
BC(S)P12401 Pressed Handles Long



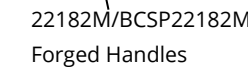
BCSP24018 Ø22 Paddle Handles



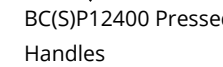
BCSP24019 Ø27 Paddle Handles



22182M/BCSP22182M Forged Handles



BC(S)P12400 Pressed Handles



## Keepers\*

Standard keepers,  
BCP10152 & BCP10153



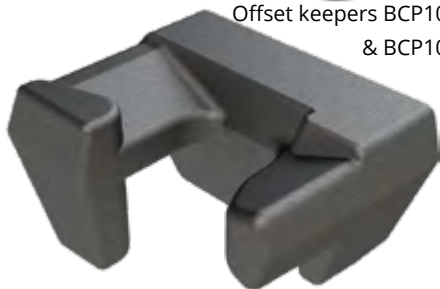
Security keepers,  
BCP13508 & BCP13508L



Bolt-on keeper,  
BCP12526M



Offset keepers BCP10364  
& BCP10365



Bloxwich ©

Standard universal keeper,  
22788/1



Narrow base universal keeper,  
BCP13605



Universal keeper, BCP12180



Weld on universal keeper,  
BCP12180M



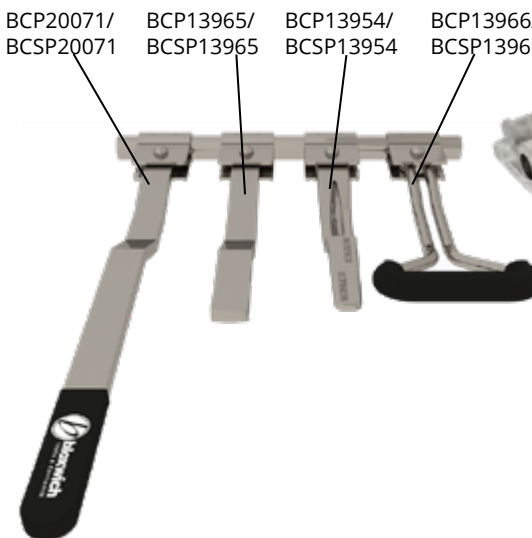
## Standard Handle & Hub Assemblies\*

BCP20071/  
BCSP20071

BCP13965/  
BCSP13965

BCP13954/  
BCSP13954

BCP13966/  
BCSP13966



## Non Standard Handle Option\*

BCP17018  
Flush Door Gear



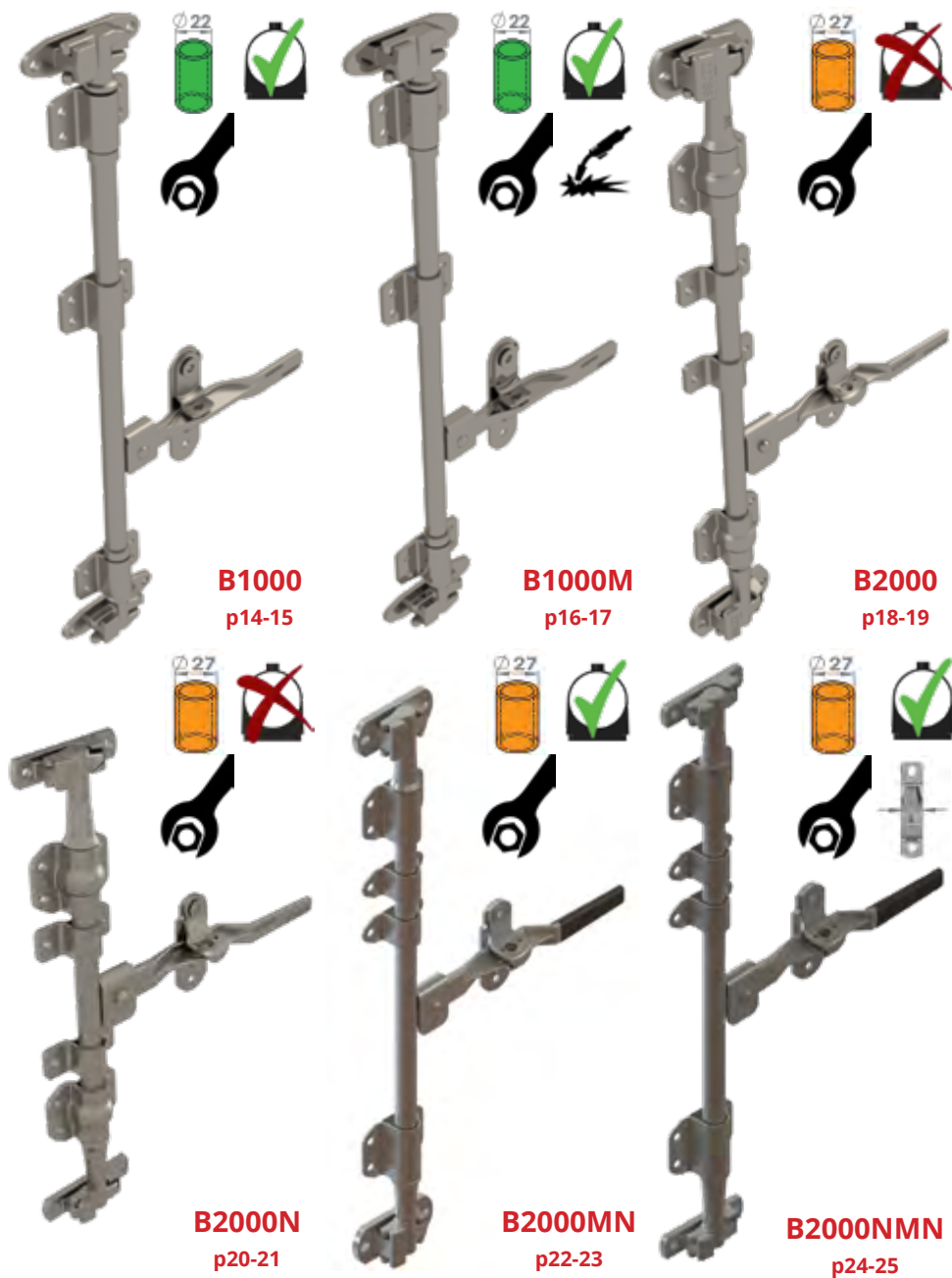
**Order online anytime at  
[www.bloxwichdoorgear.com](http://www.bloxwichdoorgear.com)**

- Customer accounts available for quicker regular online ordering
- Invoice with order option (customer dependent)
- Constantly updated
- More information and options
- Click and collect option
- Up to date product & delivery prices
- Also bought suggestions
- Special offers and promotions
- Drawings available



For more information please call +44 (0)1543 435 160 or email [sales@bloxwichgroup.com](mailto:sales@bloxwichgroup.com)

## Mild Steel Door Gear



## Mild Steel Door Gear



## Model No B1000

**Supplied in:** Self Colour, zinc plated or galvanised



**Use:** Multi purpose door gear. Commonly used on LCV, offshore mudskip lids, access panels and on storage cabinets etc.

**Weight:** 2.7 kg



Item	Part No	Description	Weight	Qty
1	BCP 12180	Keeper (Bolt on)	300 g	2
2	BCP 12179	Cam LH	325 g	1
3	BCP 12178	Cam RH	325 g	1
4	BCP 11238	Bearing Bracket (Outer)	107 g	3
5	BCP 11239	Bush	4 g	3
6	BCP 12188	Packing Plate	113 g	3
7	BCP 14354	Handle	360 g	1
8	BCP 14355	Retainer	135 g	1
9	BCP 14356	Catch	52 g	1
10	BCP 11242	Bush	6 g	1
11	BCP 12199	Rivet	15 g	1
12	BCP 11243	Handle Hub	140 g	1
13	BCP 11244	Anti Rack Ring	12 g	2
14	BCP 12339	Tube Ø22 x 1.6 mm (Sold Separately)	828 g/m	1

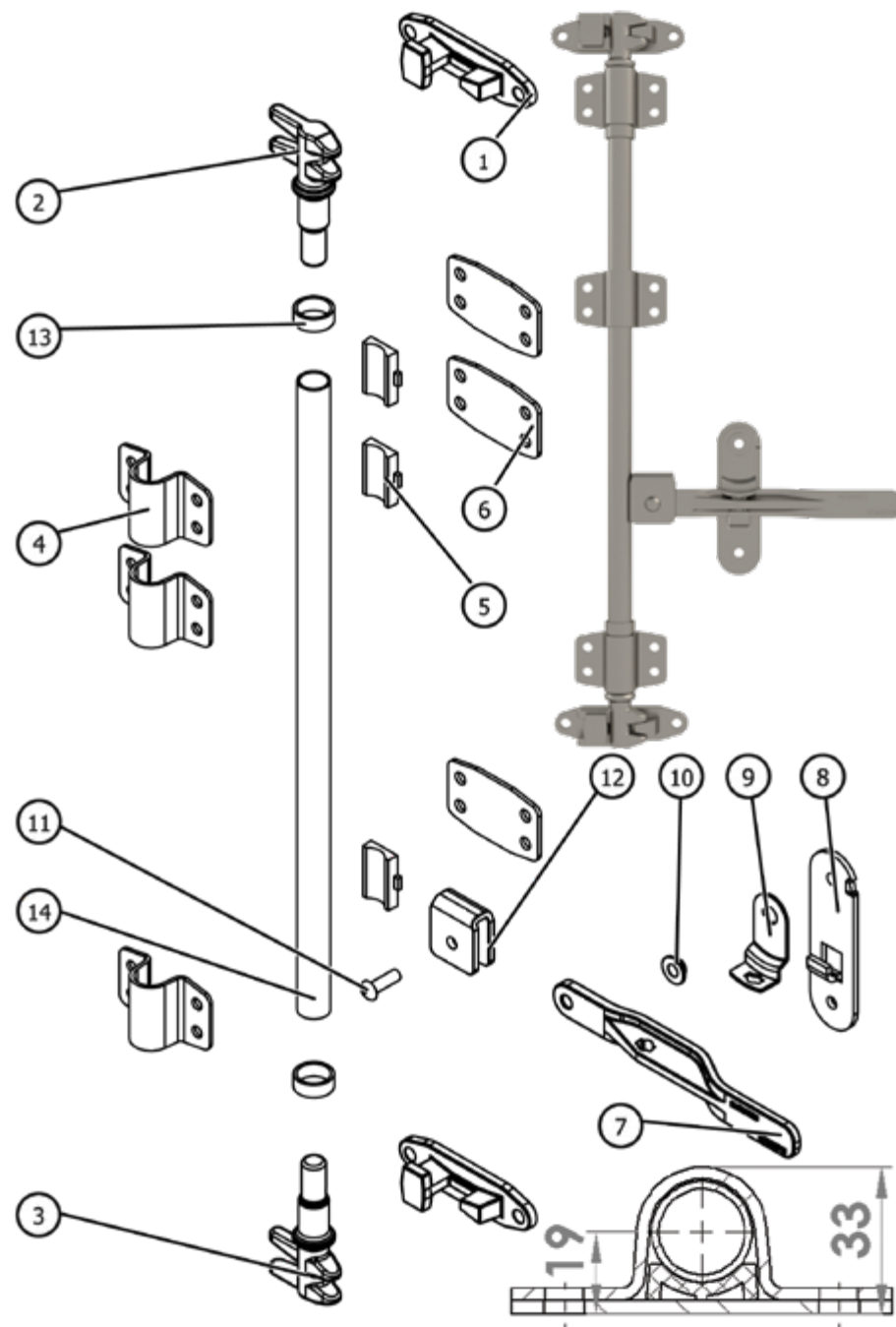
**Key Features:** Lightweight, low profile, provides anti racking, adjustable bearing bracket positions

**Standard Options:** Gaskets BCP20086E & BCP13619E

**Notes:** Parts supplied loose, fully welded & TCL door gear also available, please contact us to complete a lockrod chart or click [HERE](#) to download one

The bearing bracket small (inner and outer if applicable) quantities shown/listed are for reference only, actual quantities are application and customer dependent

For more information and dimensions please visit [www.bloxwichdoorgear.com](http://www.bloxwichdoorgear.com)





## Model No B1000M

**Supplied in:** Self Colour, zinc plated or galvanised



**Use:** Multi purpose door gear. Commonly used on LCV, offshore mudskip lids, access panels and on storage cabinets etc.

**Weight:** 2.7 kg



Item	Part No	Description	Weight	Qty
1	BCP 12180M	Keeper	300 g	2
2	BCP 12179	Cam LH	325 g	1
3	BCP 12178	Cam RH	325 g	1
4	BCP 11238	Bearing Bracket (Outer)	107 g	3
5	BCP 11239	Bush	4 g	3
6	BCP 12188	Packing Plate	113 g	3
7	BCP 14354	Handle	360 g	1
8	BCP 14355	Retainer	135 g	1
9	BCP 14356	Catch	52 g	1
10	BCP 11242	Bush	6 g	1
11	BCP 12199	Rivet	15 g	1
12	BCP 11243	Handle Hub	140 g	1
13	BCP 11244	Anti Rack Ring	12 g	2
14	BCP 12339	Tube Ø22 x 1.6 mm (Sold Separately)	828 g/m	1

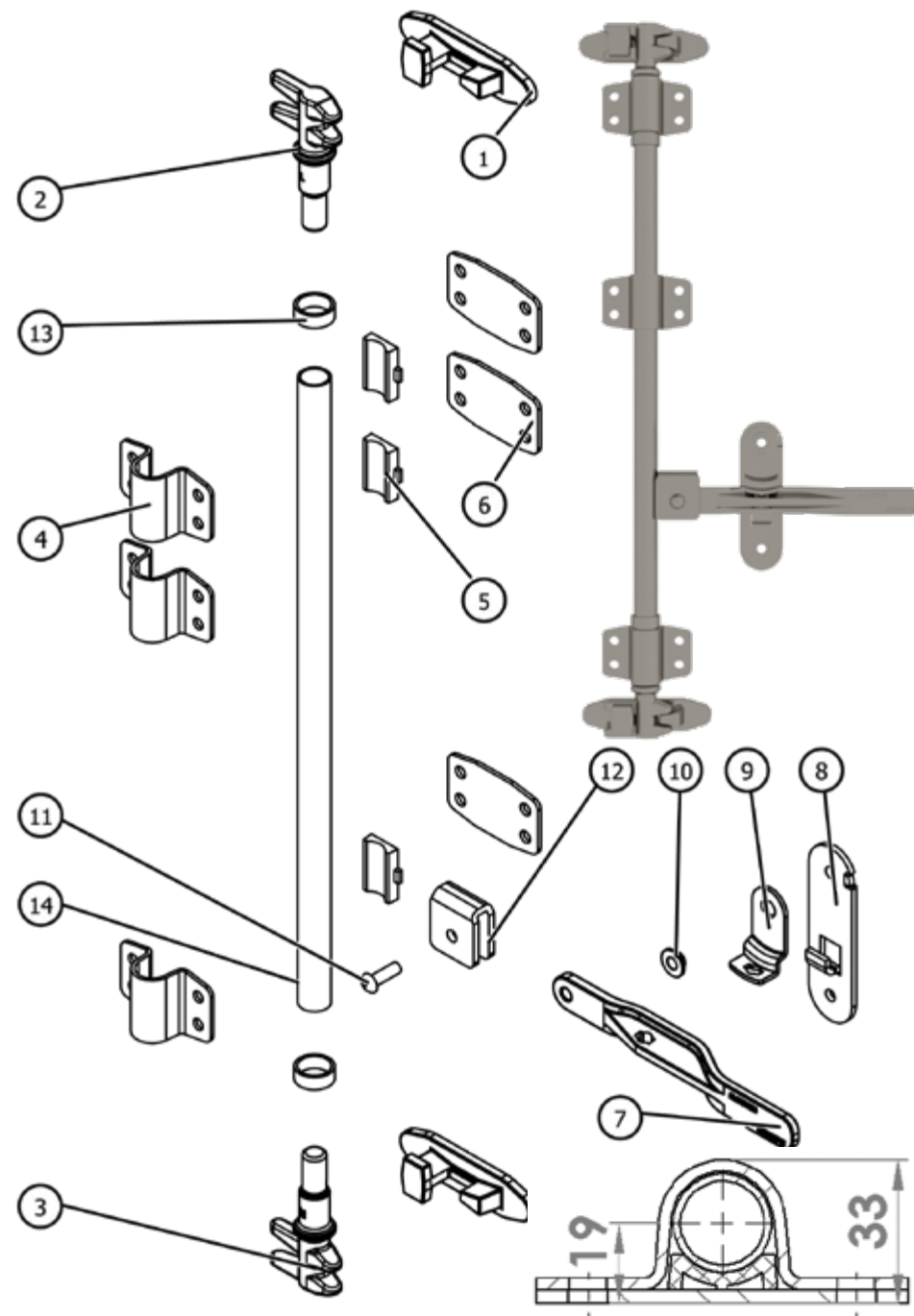
**Key Features:** Lightweight, low profile, provides anti racking, adjustable bearing bracket positions

**Standard Options:** Gaskets BCP20086E & BCP13619E

**Notes:** Parts supplied loose, fully welded & TCL door gear also available, please contact us to complete a lockrod chart or click [HERE](#) to download one

The bearing bracket small (inner and outer if applicable) quantities shown/listed are for reference only, actual quantities are application and customer dependent

For more information and dimensions please visit [www.bloxwichdoorgear.com](http://www.bloxwichdoorgear.com)



## Model No B2000

**Supplied in:** Self Colour, zinc plated or galvanised

**Use:** Multi purpose door gear. Commonly used on HGV etc.

**Weight:** 5.9 kg



Item	Part No	Description	Weight	Qty
1	22788/1	Keeper (Bolt on)	650 g	2
2	22789	Cam	840 g	2
3	22080-HD	Bearing Bracket (Outer Large)	306 g	2
4	22077-HD	Bearing Bracket (Inner Large)	201 g	2
5	22082-HD	Bearing Bracket (Outer Small)	158 g	2
6	22081-HD	Bearing Bracket (Inner Small)	118 g	2
7	BCP 13602	Handle Hub	246 g	1
8	BCP 10038/1	Rivet	25 g	1
9	22185/Z	Bush	6 g	1
10	BCP 13856	Catch	95 g	1
11	BCP 13855	Retainer	200 g	1
12	22182M	Handle (See Options)	820 g	1
13	BCP 12337	Tube Ø27 x 3.2 mm (Sold Separately)	1870 g/m	1

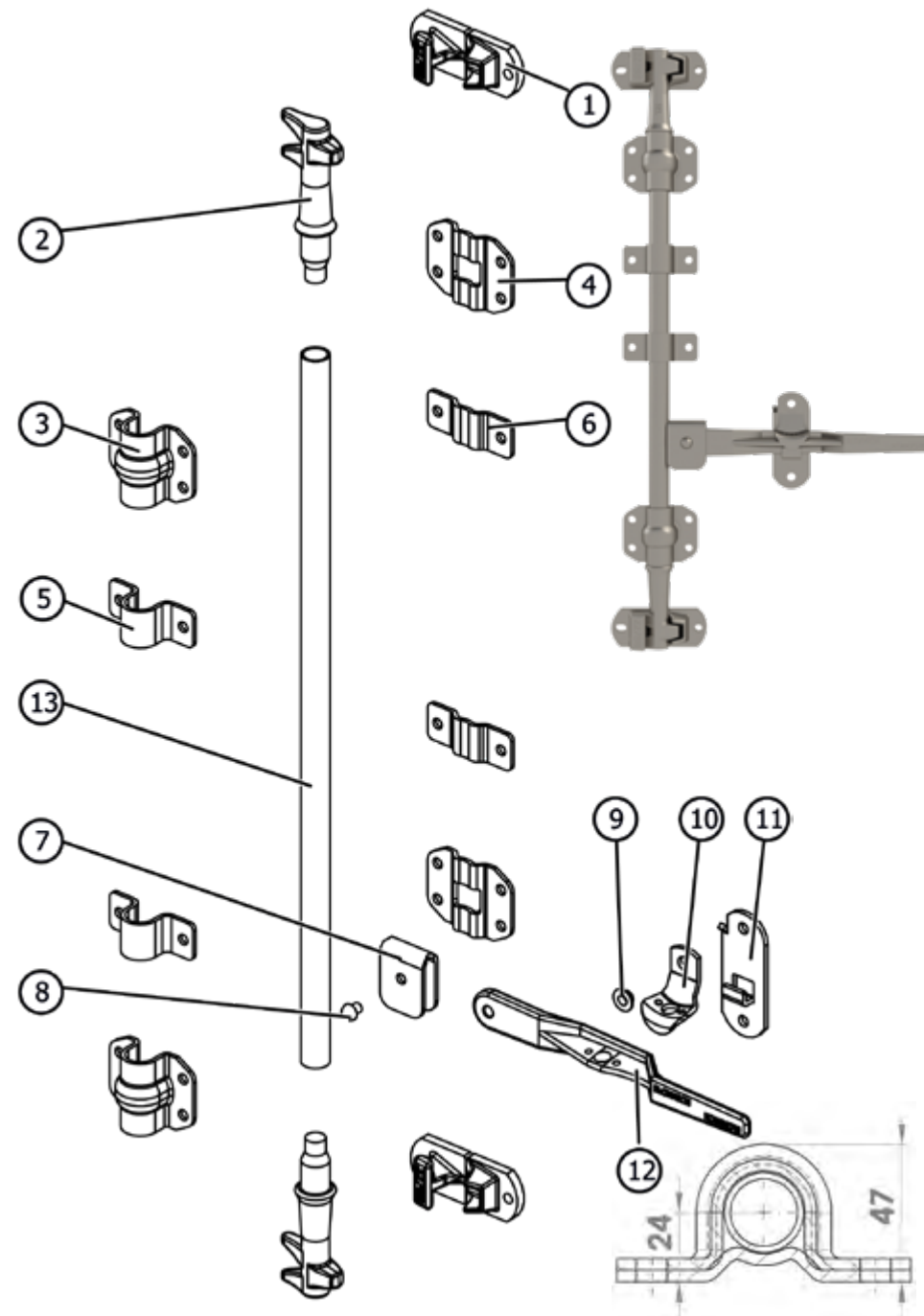
**Key Features:** Provides anti racking

**Options:** Standard handle and handle & hub assemblies (see page 9), handle sleeves, and gas-kets BCP20081E, BCP20082E & BCP13618E

Parts supplied loose, fully welded & TCL door gear also available, please contact us to complete a lockrod chart or click [HERE](#) to download one

The bearing bracket small (inner and outer if applicable) quantities shown/listed are for reference only, actual quantities are application and customer dependent

For more information and dimensions please visit [www.bloxwichdoorgear.com](http://www.bloxwichdoorgear.com)



## Model No B2000N

**Supplied in:** Self Colour, zinc plated or galvanised

**Use:** Multi purpose door gear. Commonly used on HGV trailers as the narrow base cams and keepers eases fitting in limited spaces

**Weight:** 5.3 kg



Item	Part No	Description	Weight	Qty
1	BCP 13605	Keeper (Bolt on)	395 g	2
2	BCP 13604	Cam	776 g	2
3	22080-HD	Bearing Bracket (Outer Large)	306 g	2
4	22077-HD	Bearing Bracket (Inner Large)	201 g	2
5	22082-HD	Bearing Bracket (Outer Small)	158 g	2
6	22081-HD	Bearing Bracket (Inner Small)	118 g	2
7	BCP 13602	Handle Hub	246 g	1
8	BCP 10038/1	Rivet	25 g	1
9	22185/Z	Bush	6 g	1
10	BCP 13856	Catch	95 g	1
11	BCP 13855	Retainer	200 g	1
12	22182M	Handle (See Options)	820 g	1
13	BCP 12337	Tube Ø27 x 3.2 mm (Sold Separately)	1870 g/m	1

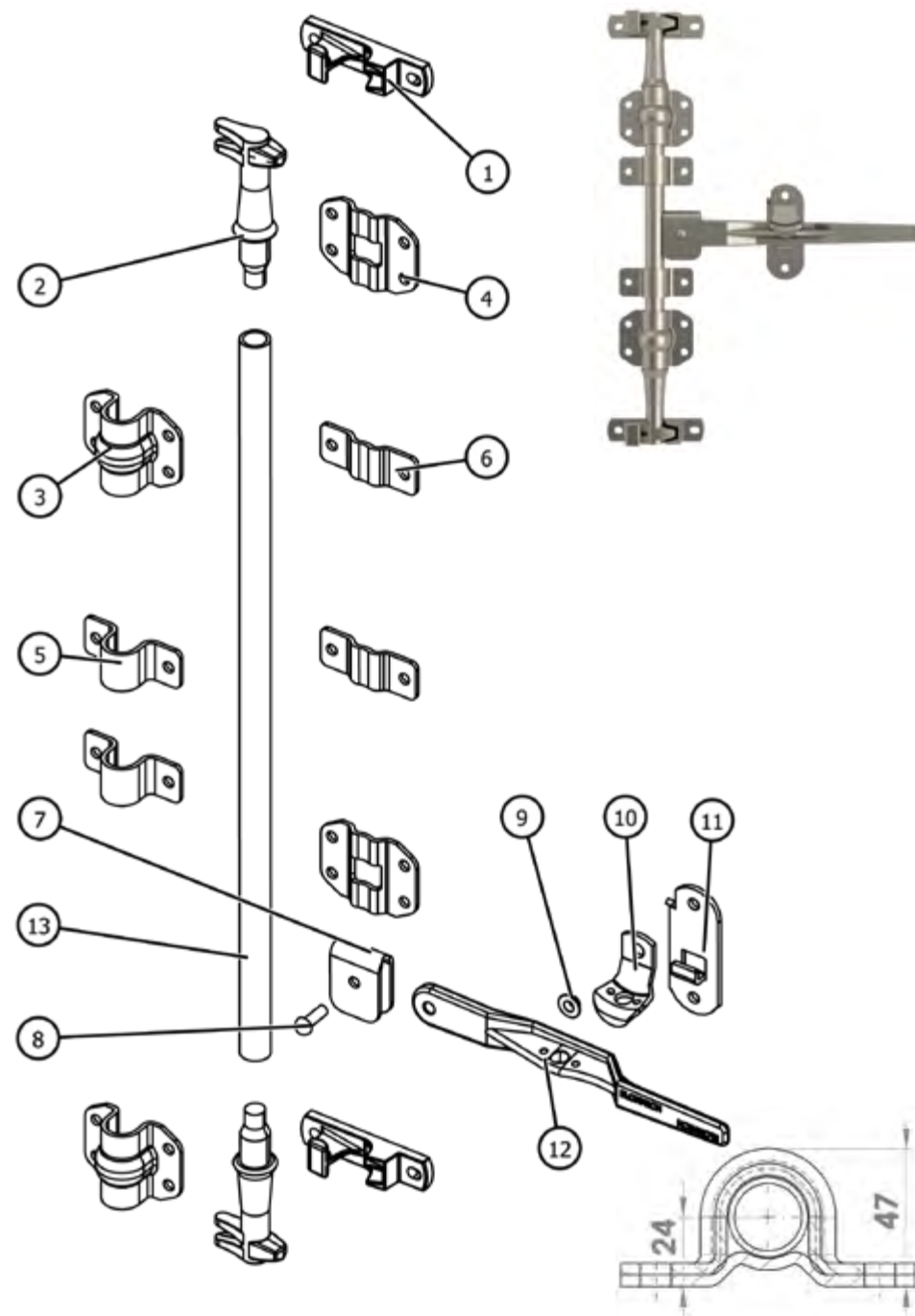
**Key Features:** Provides anti racking, narrow base cam and keeper

**Options:** Standard handle and handle & hub assemblies (see page 9) and handle sleeves. Gaskets BCP20110E, BCP20082E, BCP20073E & BCP13618E or B2000N-GASKET-SET (all sold separately)

Parts supplied loose, fully welded, variable height & TCL door gear also available, please contact us to complete a lockrod chart or click [HERE](#) to download one

The bearing bracket small (inner and outer if applicable) quantities shown/listed are for reference only, actual quantities are application and customer dependent

For more information and dimensions please visit [www.bloxwichdoorgear.com](http://www.bloxwichdoorgear.com)



## Model No B2000MN

**Supplied in:** Self Colour, zinc plated or galvanised

**Use:** Multi purpose door gear. Commonly used on HGV etc.

**Weight:** 5.2 kg



Item	Part No	Description	Weight	Qty
1	22788/1	Keeper (Bolt-on)	650 g	2
2	22789	Cam	840 g	2
3	BCP 14063-HD	Bearing Bracket (Outer Large)	250 g	2
4	BCP 14064-HD	Bearing Bracket (Outer Small)	120 g	2
5	BCP 14271-HD	Bush	25 g	2
6	BCP 14065-HD	Bush	14 g	2
7	BCP 13602	Handle Hub	246 g	1
8	BCP 10038/1/Z	Rivet	25 g	1
9	22185/Z	Bush	6 g	1
10	BCP 13856	Catch	95 g	1
11	BCP 14033	Retainer	200 g	1
12	22182M	Handle (See Options)	820 g	1
13	BCP 14081	Sleeve	20 g	1
14	BCP 12337	Tube Ø27 x 3.2mm (Sold Separately)	1870 g/m	1

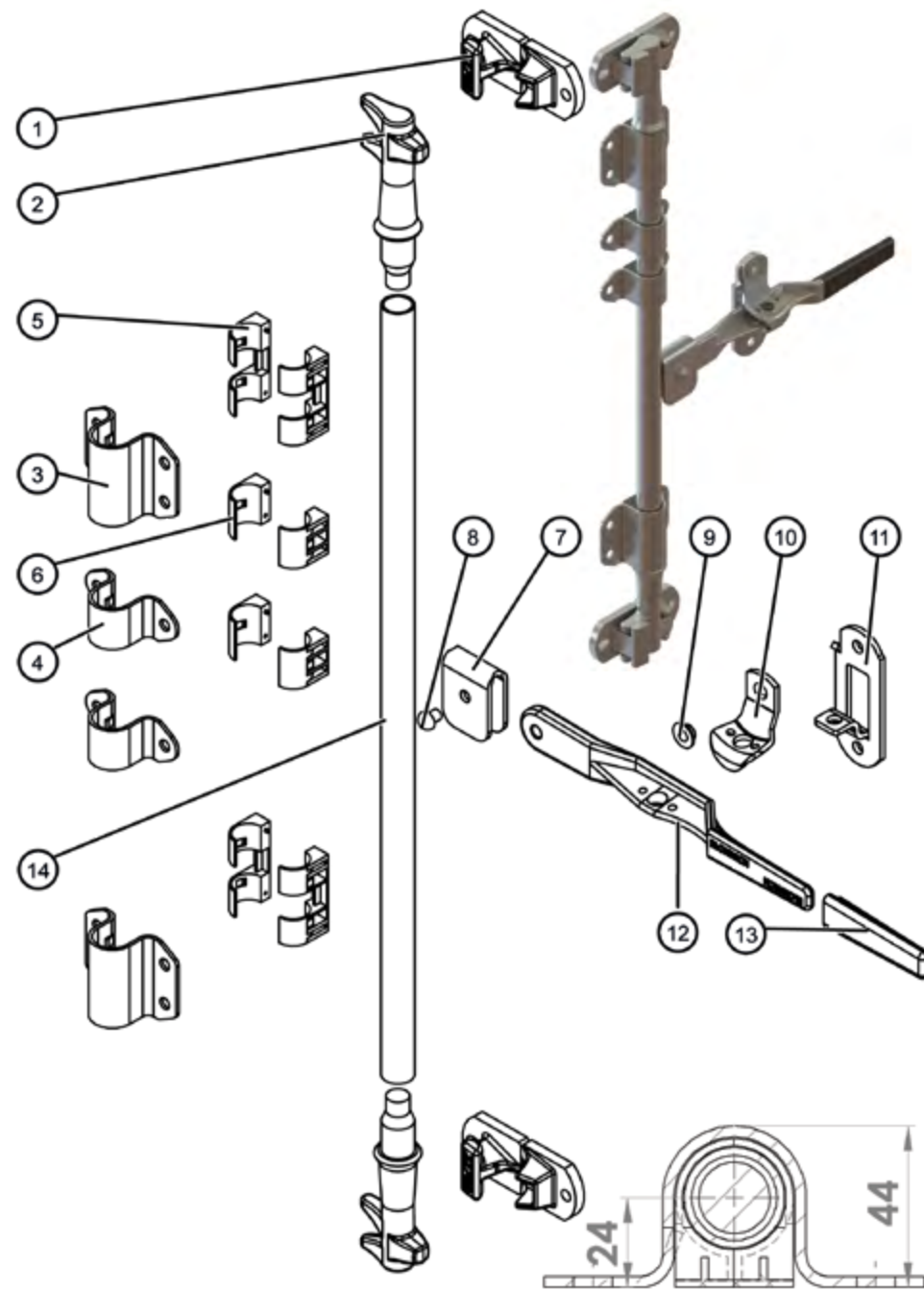
**Key Features:** Provides anti racking

**Options:** Standard handle and handle & hub assemblies (see page 9) and handle sleeves. Gaskets BCP20109E, BCP20082E, BCP20085E & BCP13618E or B2000MN-GASKET-SET (all sold separately).

**Notes:** Parts supplied loose, fully welded available, please contact us to complete a lockrod chart

The bearing bracket small (inner and outer if applicable) quantities shown/listed are for reference only, actual quantities are application and customer dependent

For more information and dimensions please visit [www.bloxwichdoorgear.com](http://www.bloxwichdoorgear.com)





## Model No B2000NMN

**Supplied in:** Self Colour, zinc plated or galvanised

**Use:** Commonly used on HGV trailers as the narrow base cams and keepers eases fitting in limited spaces

**Weight:** 4.6 kg



Item	Part No	Description	Weight	Qty
1	BCP 13605	Keeper (Bolt On)	395 g	2
2	BCP 13604	Cam	776 g	2
3	BCP 14063-HD	Bearing Bracket (Outer Large)	250 g	2
4	BCP 14271-HD	Bush	25 g	2
5	BCP 14064-HD	Bearing Bracket (Outer Small)	120 g	2
6	BCP 14065-HD	Bush	14 g	2
7	BCP 13602	Handle Hub	246 g	1
8	BCP 10038/1	Rivet	25 g	1
9	22185/Z	Bush	6 g	1
10	BCP 13856	Catch	95 g	1
11	BCP 14033	Retainer	200 g	1
12	22182M	Handle (See Options)	820 g	1
13	BCP 14081	Sleeve	20 g	1
14	BCP 12337	Tube Ø27 x 3.2mm (Sold Separately)	1870 g/m	1

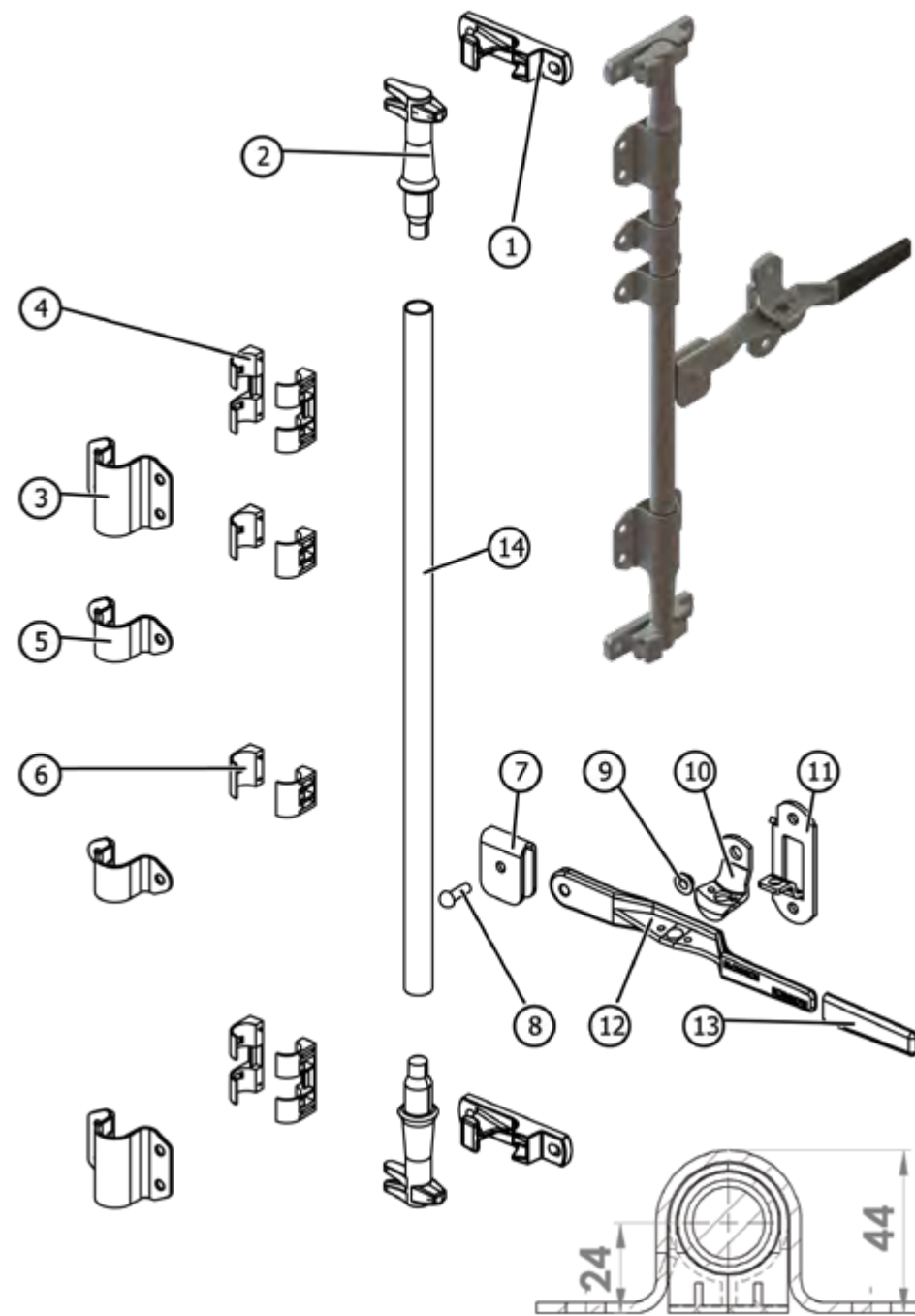
**Key Features:** Provides anti racking, narrow base cam and keeper

**Options:** Standard handle and handle & hub assemblies (see page 9), handle sleeves

**Notes:** Parts supplied loose, fully welded available, please contact us to complete a lockrod chart

The bearing bracket small (inner and outer if applicable) quantities shown/listed are for reference only, actual quantities are application and customer dependent

For more information and dimensions please visit [www.bloxwichdoorgear.com](http://www.bloxwichdoorgear.com)



## Model No B2533B

**Supplied in:** Self Colour, zinc plated or galvanised

**Use:** Multi purpose door gear. Commonly used on HGV etc.

**Weight:** 4.3 kg



Item	Part No	Description	Weight	Qty
1	BCP 10153	Keeper LH (See Options)	425 g	1
2	BCP 10081	Cam LH	490 g	1
3	BCP 10152	Keeper RH (See Options)	425 g	1
4	BCP 10080	Cam RH	490 g	1
5	BCP 14166	Bearing Bracket (Outer Large)	440 g	2
6	BCP 14089	Split Bush	12 g	5
7	BCP 14094	Bearing Bracket (Outer Small)	100 g	1
8	BCP 13602	Handle Hub	246 g	1
9	BCP 10038/1	Rivet	25 g	1
10	22185	Bush	9 g	1
11	BCP 13856	Catch	95 g	1
12	BCP 13855	Retainer	200 g	1
13	22182M	Handle (See Options)	820 g	1
14	BCP 10120	Anti Rack Ring	30 g	2
15	BCP 12337	Tube Ø27 x 3.2mm (Sold Separately)	1870 g/m	1

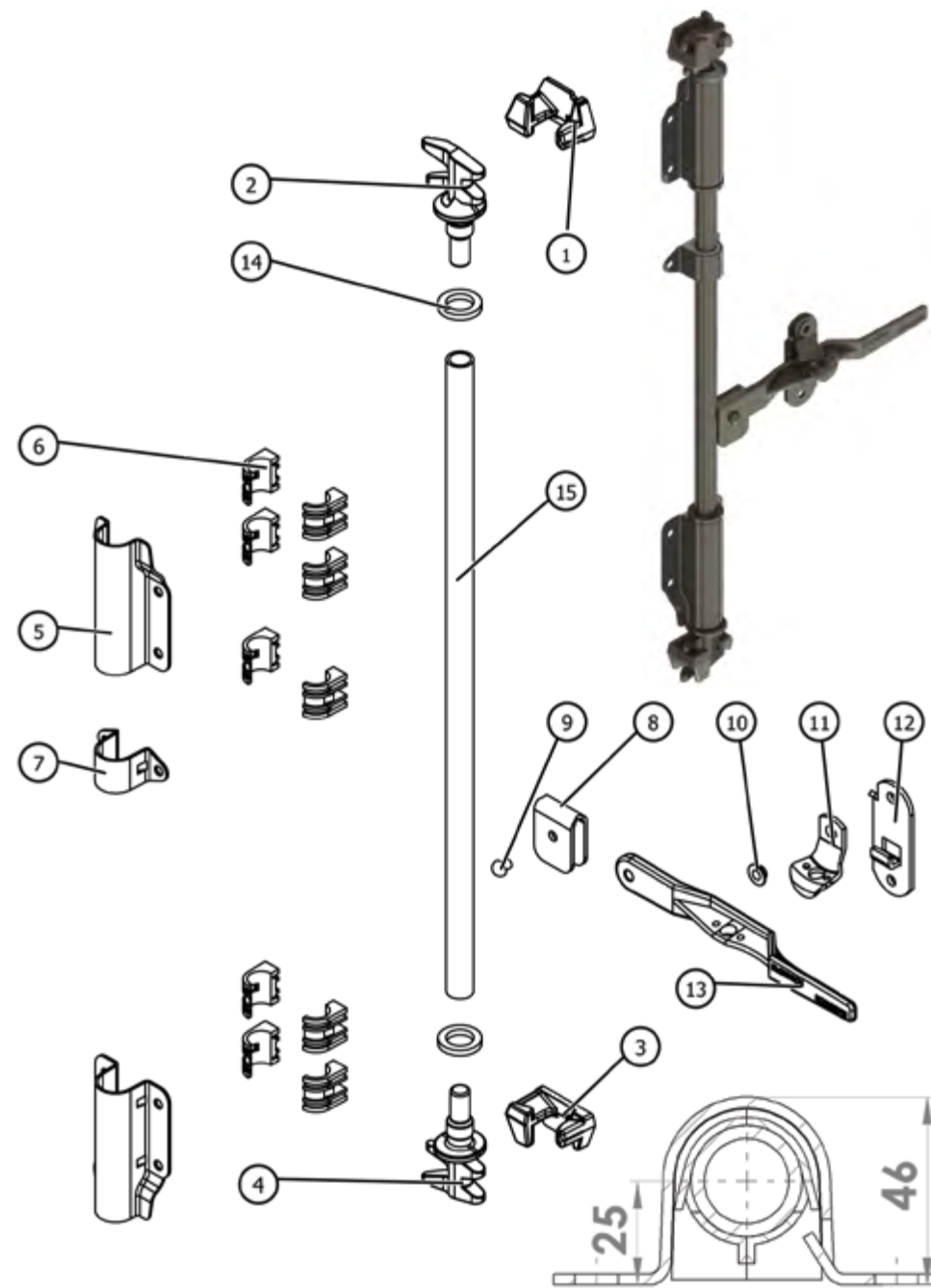
**Key Features:** Provides anti racking, swan neck outer bearing brackets clear door seals

**Options:** Standard handle options (see page 9), BCP14081 handle sleeve, bolt-on keepers available BCP 12526M

**Notes:** Parts supplied loose, fully welded available, please contact us to complete a lockrod chart

The bearing bracket small (inner and outer if applicable) quantities shown/listed are for reference only, actual quantities are application and customer dependent

For more information and dimensions please visit [www.bloxwichdoorgear.com](http://www.bloxwichdoorgear.com)



## Model No B2500A



**Supplied in:** Self Colour, zinc plated or galvanised

**Use:** Standard on ISO and offshore containers, approved by Lloyds Register

**Weight:** 7.1 kg



Item	Part No	Description	Weight	Qty
1	BCP 12526M-G	Keeper Universal Bolt On	390 g	2
2	BCP 10081	Cam LH	630 g	1
3	BCP 10080	Cam RH	630 g	1
4	23153	Bearing Bracket (Outer Large)	890 g	2
5	BCP 11748	Bearing Bracket (Inner Large)	560 g	2
6	BCP 11945	Anti Rack Ring	64 g	2
7	22245	Bearing Bracket (Outer Small)	180 g	2
8	22246	Bearing Bracket (Inner Small)	110 g	2
9	BCP 13602	Handle Hub	246 g	1
10	BCP 10038/1/Z	Rivet	25 g	1
11	22185/Z	Bush	6 g	1
12	BCP 13856	Catch	95 g	1
13	BCP 13855	Retainer	200 g	1
14	22182M	Handle (See Options)	820 g	1
15	BCP 12338	Tube Ø34 x 3.2mm (Sold Separately)	2410 g/m	1

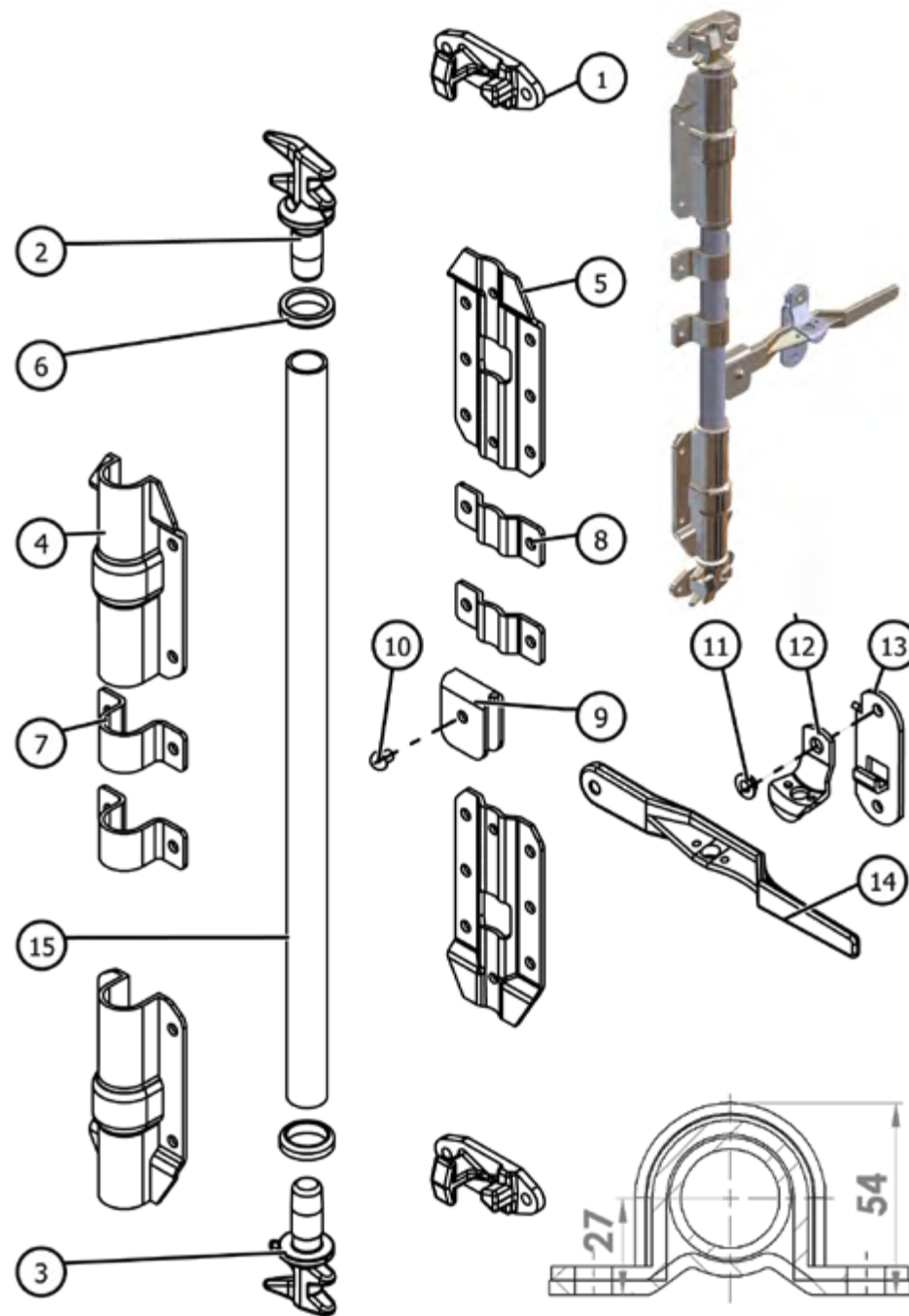
**Key Features:** Provides anti racking, swan neck outer bearing brackets clear door seals

**Options:** Standard handle options (see page 9), BCP14081 handle sleeve, BCP 10080M & BCP 10081M modified cams (see page 9), BCP10152 & BCP10153 weld on keepers

**Notes:** Parts supplied loose, fully welded available, please contact us to complete a lockrod chart

The bearing bracket small (inner and outer if applicable) quantities shown/listed are for reference only, actual quantities are application and customer dependent

For more information and dimensions please visit [www.bloxwichdoorgear.com](http://www.bloxwichdoorgear.com)



## Model No B2566

**Supplied in:** Self Colour, zinc plated or galvanised

**Use:** Standard on ISO and offshore containers, approved by Lloyds Register

**Weight:** 4.9 kg



Item	Part No	Description	Weight	Qty
1	BCP 10153	Keeper LH	390 g	1
2	BCP 10081	Cam LH	630 g	1
3	BCP 10152	Keeper RH	390 g	1
4	BCP 10080	Cam RH	630 g	1
5	BCP 14037	Bearing Bracket (Outer Large)	475 g	2
6	BCP 12536	Bush - Long	38 g	2
7	BCP 13507	Bearing Bracket (Outer Small)	110 g	2
8	BCP 13518	Bush - Short	16 g	2
9	BCP 13602	Handle Hub	240 g	1
10	BCP 10038/1/G	Rivet	25 g	1
11	22185/Z	Bush	6 g	1
12	BCP 13856	Catch	95 g	1
13	BCP 13855	Retainer	220 g	1
14	22182M	Handle (See Options)	820 g	1
15	BCP 11945	Anti Rack Ring	64 g	2
16	BCP 12338	Tube Ø34 x 3.2mm (Sold Separately)	2410 g/m	1

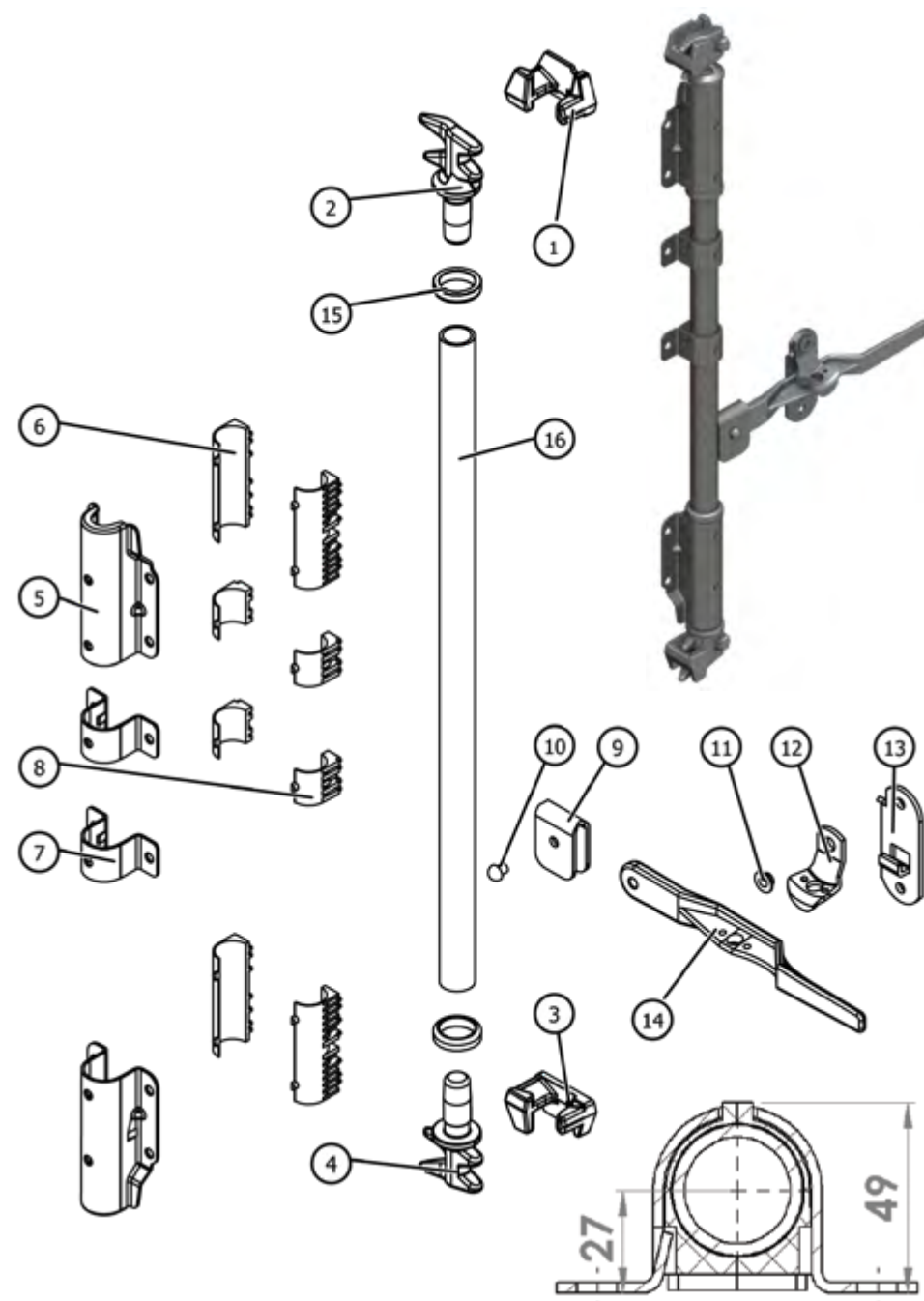
**Key Features:** Provides anti racking, swan neck outer bearing brackets clear door seals

**Options:** Standard handle options (see page 9), BCP14081 handle sleeve, BCP 10080M & BCP 10081M modified cams (see page 9), BCP12526M bolt-on keepers

**Notes:** Parts supplied loose, fully welded available, please contact us to complete a lockrod chart

The bearing bracket small (inner and outer if applicable) quantities shown/listed are for reference only, actual quantities are application and customer dependent

For more information and dimensions please visit [www.bloxwichdoorgear.com](http://www.bloxwichdoorgear.com)



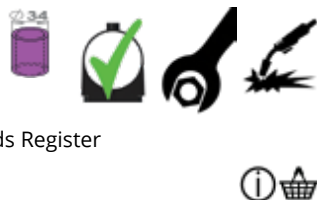


## Model No BE2566M

**Supplied in:** Self Colour, zinc plated or galvanised

**Use:** Standard on ISO and offshore containers, approved by Lloyds Register

**Weight:** 4.9 kg



Item	Part No	Description	Weight	Qty
1	BCP 10153	Keeper LH	390 g	1
2	BCP 10081	Cam LH	630 g	1
3	BCP 10152	Keeper RH	390 g	1
4	BCP 10080	Cam RH	630 g	1
5	BCP 12684	Bearing Bracket (Outer Large)	466 g	2
6	BCP 12536	Bush - Long	38 g	2
7	BCP 13507	Bearing Bracket (Outer Small)	110 g	2
8	BCP 13518	Bush - Short	16 g	2
9	BCP 13602	Handle Hub	240 g	1
10	BCP 10038/1/G	Rivet	25 g	1
11	22185/Z	Bush	6 g	1
12	BCP 13856	Catch	95 g	1
13	BCP 13855	Retainer	220 g	1
14	22182M	Handle (See Options)	820 g	1
15	BCP 11945	Anti-Rack Ring	64 g	4
16	BCP 12338	Tube Ø34 x 3.2mm (Sold Separately)	2410 g/m	1

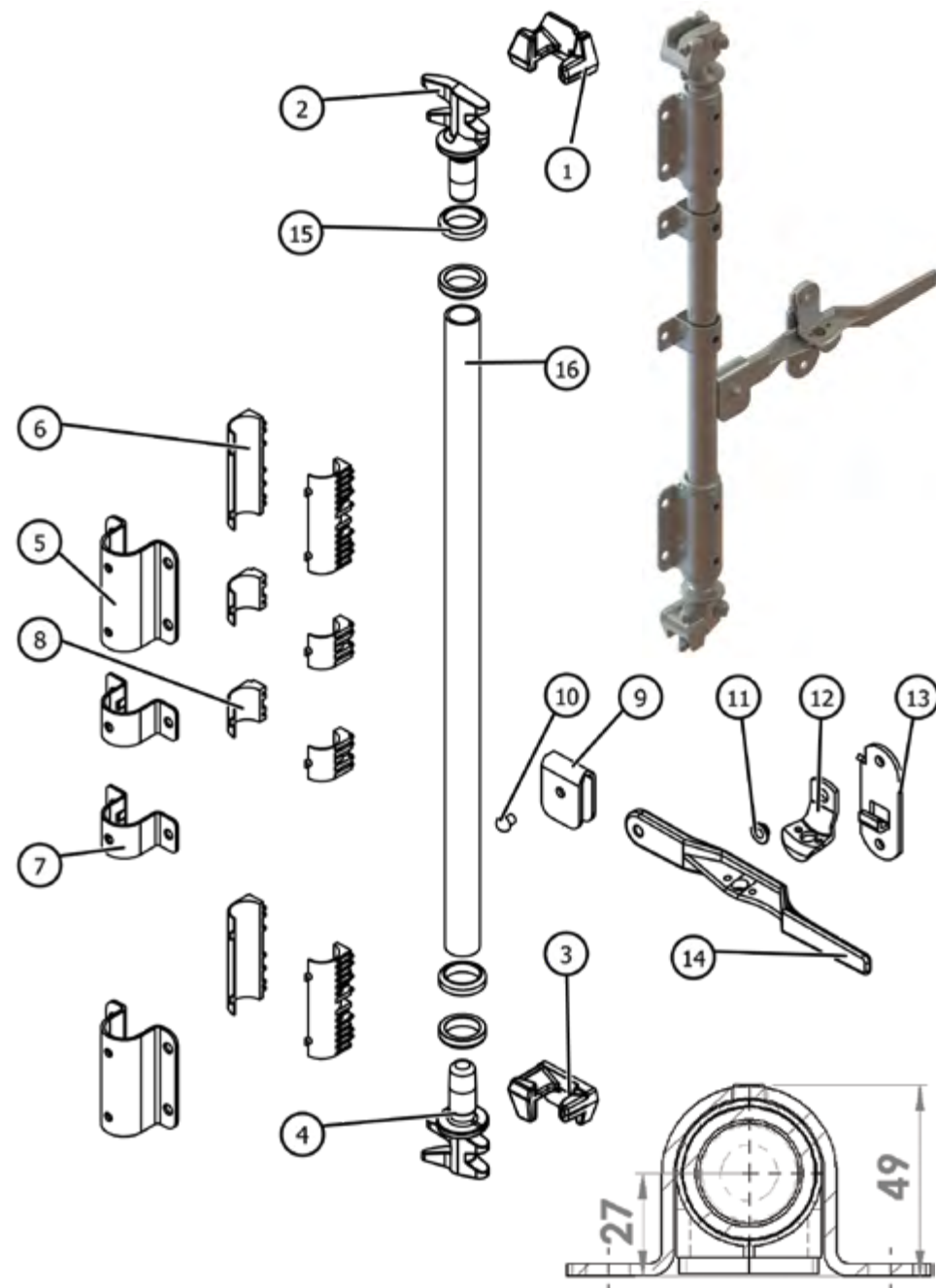
**Key Features:** Provides anti racking, adjustable bearing bracket positions

**Options:** Standard handle options (see page 9), BCP14081 handle sleeve, BCP 10080M & BCP 10081M modified cams (see page 9), BCP12526M bolt-on keepers

**Notes:** Parts supplied loose, fully welded available, please contact us to complete a lockrod chart

The bearing bracket small (inner and outer if applicable) quantities shown/listed are for reference only, actual quantities are application and customer dependent

For more information and dimensions please visit [www.bloxwichdoorgear.com](http://www.bloxwichdoorgear.com)



## Model No B2588

**Supplied in:** Self Colour, zinc plated or galvanised

**Use:** Standard on ISO and offshore containers, approved by Lloyds Register

**Weight:** 4.6 kg



Item	Part No	Description	Weight	Qty
1	BCP 10153	Keeper LH	390 g	1
2	BCP 10081	Cam LH	630 g	1
3	BCP 10152	Keeper RH	390 g	1
4	BCP 10080	Cam RH	630 g	1
5	BCP 14308	Bearing Bracket (Outer Large)	390 g	2
6	BCP 12536	Bush - Long	38 g	2
7	BCP 13593	Bearing Bracket (Outer Small)	90 g	2
8	BCP 13518	Bush - Short	16 g	2
9	BCP 11945	Anti Rack Ring	64 g	2
10	BCP 13602	Handle Hub	240 g	1
11	BCP 10038/1/Z	Rivet	25 g	1
12	BCP 14273/2	Retainer Assembly	300 g	1
13	22182M	Handle (See Options)	820 g	1
14	BCP 12338	Tube Ø34 x 3.2mm (Sold Separately)	2410 g/m	1

**Key Features:** Provides anti racking, swan neck outer bearing brackets clear door seals

**Options:** Standard handle options (see page 9), BCP14081 handle sleeve, BCP 10080M & BCP 10081M modified cams (see page 9), BCP12526M bolt-on keepers

**Notes:** Parts supplied loose, fully welded available, please contact us to complete a lockrod chart

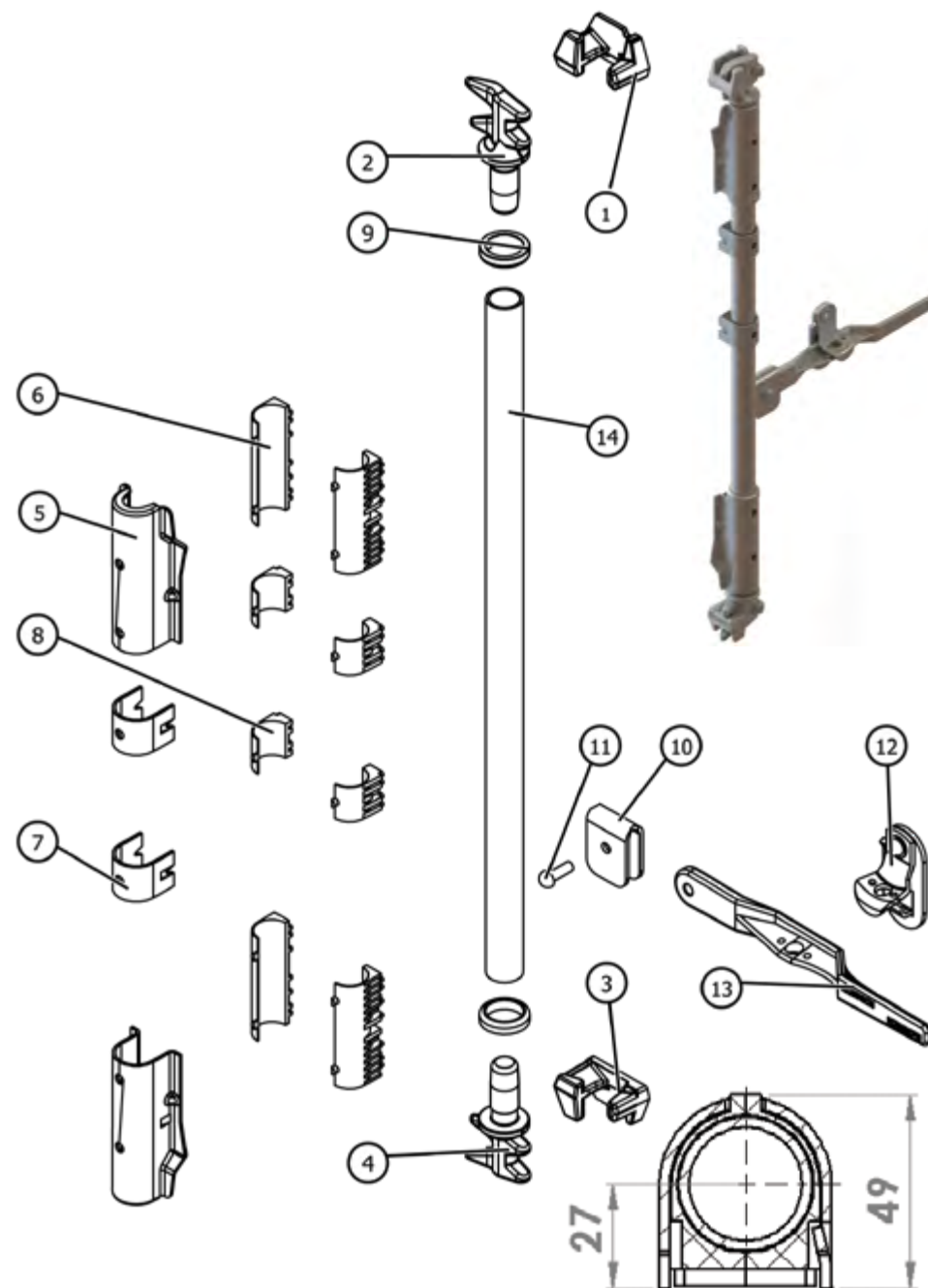
The bearing bracket small (inner and outer if applicable) quantities shown/listed are for reference only, actual quantities are application and customer dependent

For more information and dimensions please visit [www.bloxwichdoorgear.com](http://www.bloxwichdoorgear.com)

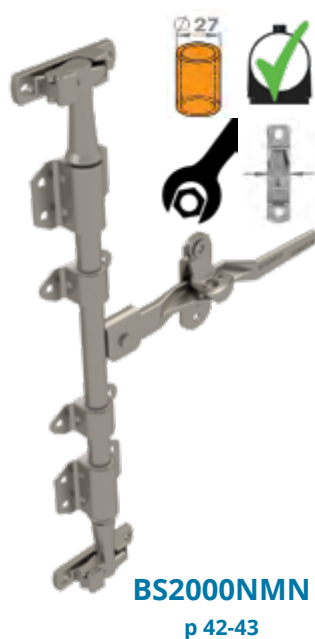
Taiwan Utility Model No UM 83275

GB PAT App 2 261 255

Korea PAT App 20782 / 92



## Stainless Steel Door Gear



## Stainless Steel Door Gear



## Model No BS1000

**Supplied in:** Polished 304 Stainless Steel



**Use:** Multi purpose door gear. Commonly used on LCV, offshore mudskip lids, access panels and on storage cabinets etc.

**Weight:** 2.7 kg



Item	Part No	Description	Weight	Qty
1	BCSP 12180	Keeper (Bolt on)	300 g	2
2	BCSP 12179	Cam LH	325 g	1
3	BCSP 12178	Cam RH	325 g	1
4	BCSP 11238	Bearing Bracket (Outer)	107 g	3
5	BCP 11239	Bush	4 g	3
6	BCSP 12188	Packing Plate	113 g	3
7	BCSP 14354	Handle	360 g	1
8	BCSP 14355	Retainer	135 g	1
9	BCSP 14356	Catch	52 g	1
10	BCSP 11242	Bush	6 g	1
11	BCSP 12199	Rivet	15 g	1
12	BCSP 11243	Handle Hub	140 g	1
13	BCSP 12200	Anti Rack Ring	12 g	2
14	BCSP 12339	Tube Ø22 x 1.6mm (Sold Separately)	828 g/m	1

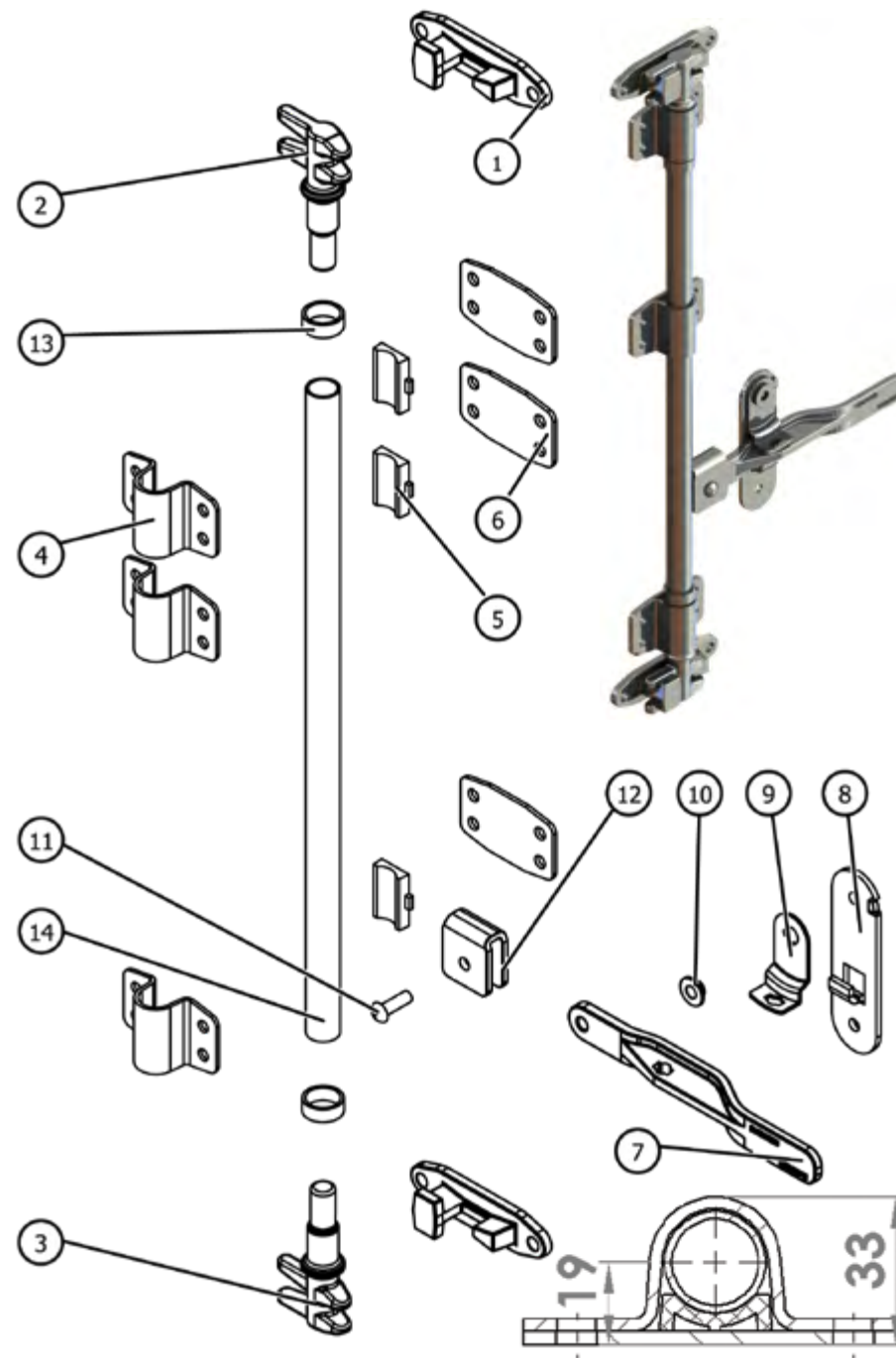
**Key Features:** Lightweight, low profile, provides anti racking, adjustable bearing bracket positions

**Options:** N/A

**Notes:** Parts supplied loose, fully welded available, please contact us to complete a lockrod chart

The bearing bracket small (inner and outer if applicable) quantities shown/listed are for reference only, actual quantities are application and customer dependent

For more information and dimensions please visit [www.bloxwichdoorgear.com](http://www.bloxwichdoorgear.com)





## Model No BS2000MN

**Supplied in:** Polished 304 Stainless Steel

**Use:** Multi purpose door gear. Commonly used on HGV etc.

**Weight:** 5.1 kg



Item	Part No	Description	Weight	Qty
1	BCSP22788/1	Keeper (Bolt-on)	650 g	2
2	BCSP22789	Cam	840 g	2
3	BCSP14063-HD	Bearing Bracket (Outer Large)	250 g	2
4	BCSP14064-HD	Bearing Bracket (Outer Small)	120 g	2
5	BCP21001	Bush Long	25 g	2
6	BCP21002	Bush Small	14 g	2
7	BCSP22084	Handle Hub	189 g	1
8	BCSP13637	Rivet	21 g	1
9	BCSP13636	Bush	9 g	1
10	BCSP13856	Catch	95 g	1
11	BCSP13855	Retainer	185 g	1
12	BCSP22182	Handle (See Options)	820 g	1
13	BCSP12337	Tube Ø27 x 2mm (Sold Separately)	1235 g/m	1

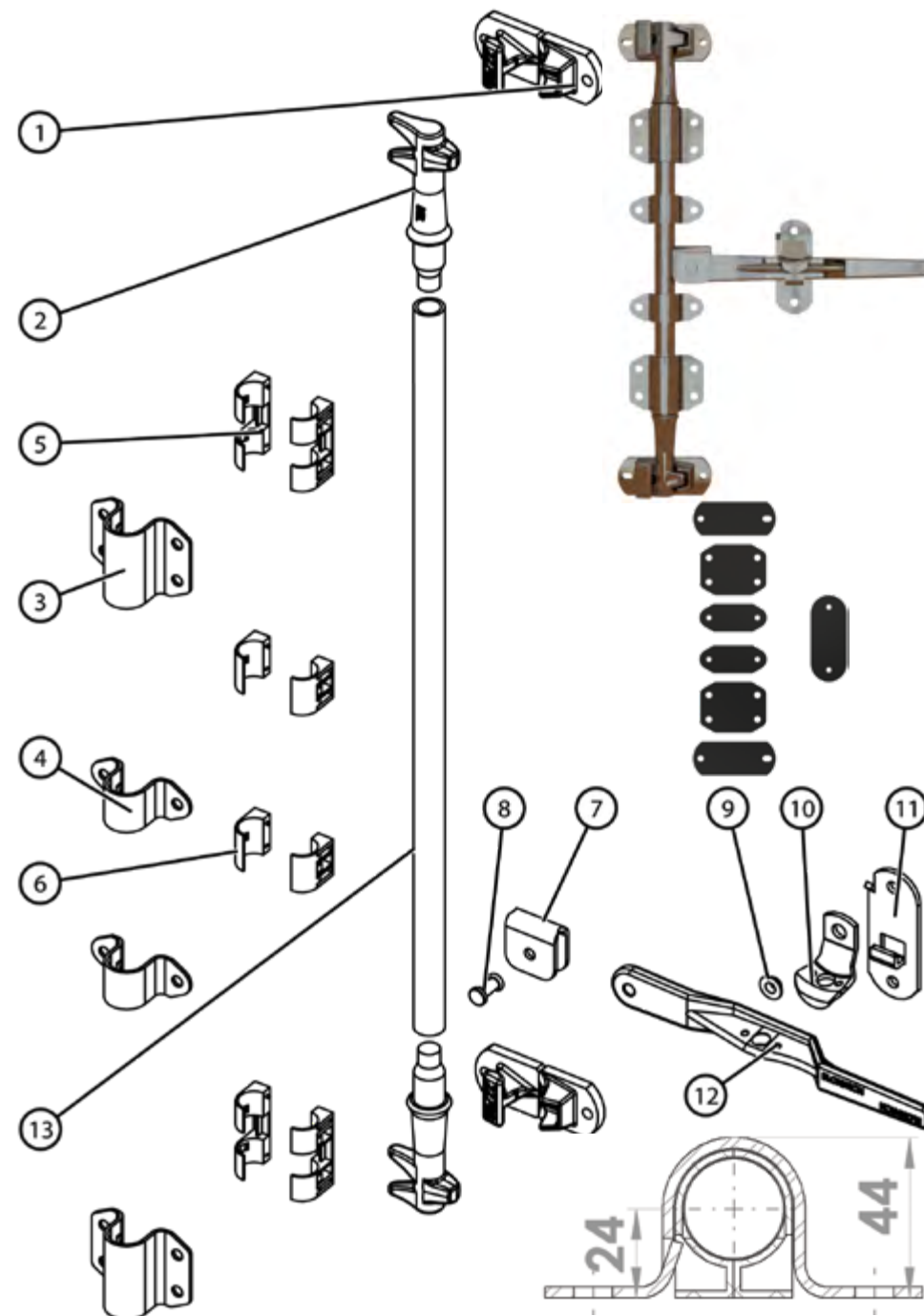
**Key Features:** Provides anti racking

**Options:** Standard handle and handle & hub assemblies (see page 9) and handle sleeves. Gaskets BCP20109E, BCP20082E, BCP20085E & BCP13618E or B2000MN-GASKET-SET (all sold separately).

**Notes:** Parts supplied loose, fully welded available, please contact us to complete a lockrod chart

The bearing bracket small (inner and outer if applicable) quantities shown/listed are for reference only, actual quantities are application and customer dependent

For more information and dimensions please visit [www.bloxwichdoorgear.com](http://www.bloxwichdoorgear.com)



## Model No BS2000NMN

**Supplied in:** Polished 304 Stainless Steel

**Use:** Commonly used on HGV trailers as the narrow base cams and keepers eases fitting in limited spaces

**Weight:** 4.5 kg

Item	Part No	Description	Weight	Qty
1	BCSP13605	Keeper (Bolt-on)	395 g	2
2	BCSP13604	Cam	776 g	2
3	BCSP14063-HD	Bearing Bracket (Outer Large)	250 g	2
4	BCP21001	Bush Long	25 g	2
5	BCSP14064-HD	Bearing Bracket (Outer Small)	120 g	2
6	BCP21002	Bush Small	14 g	2
7	BCSP22084	Handle Hub	189 g	1
8	BCSP13637	Rivet	21 g	1
9	BCSP13636	Bush	9 g	1
10	BCSP13856	Catch	95 g	1
11	BCSP13855	Retainer	185 g	1
12	BCSP22182	Handle (See Options)	820 g	1
13	BCSP12337	Tube Ø27 x 2mm (Sold Separately)	1235 g/m	1

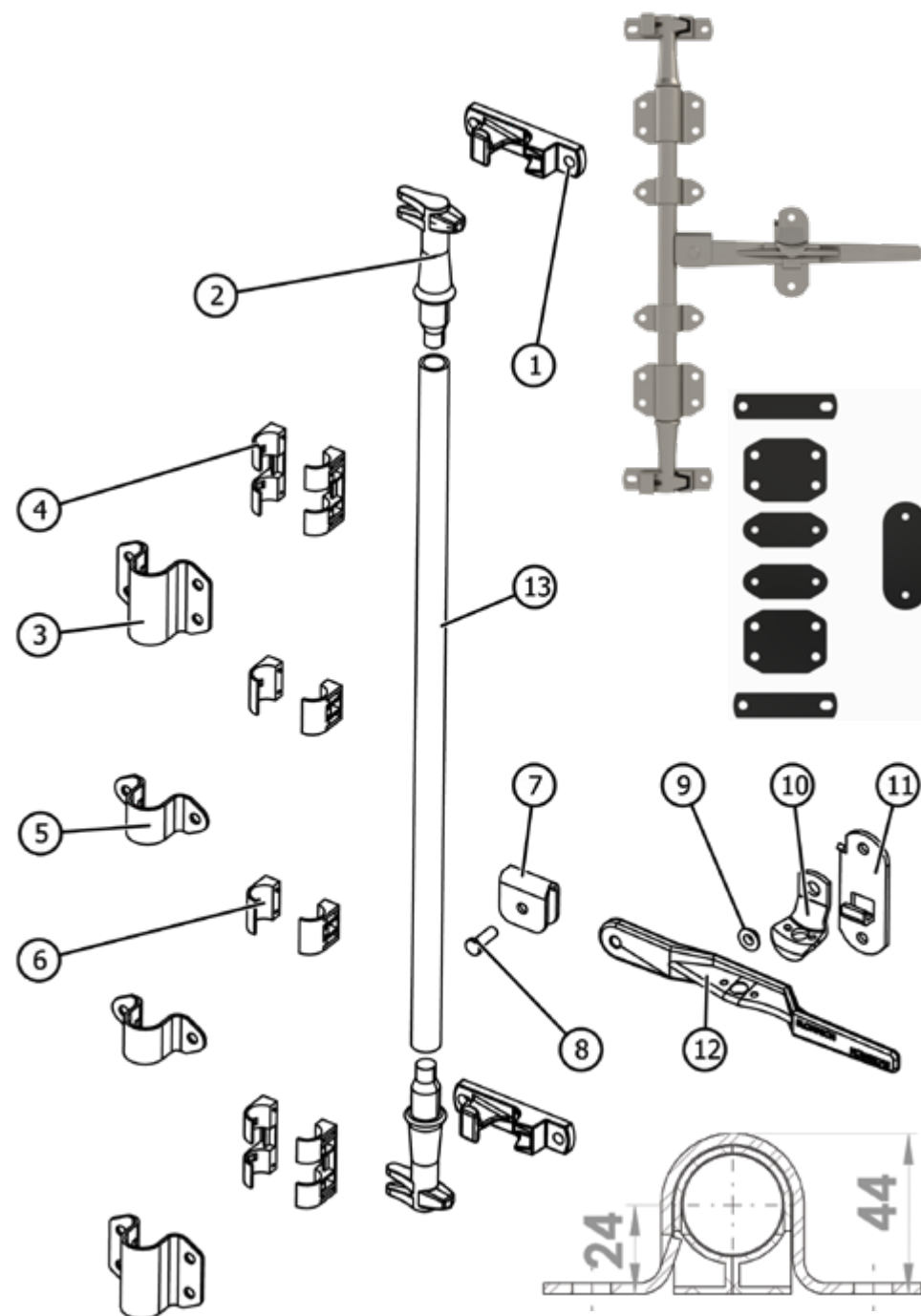
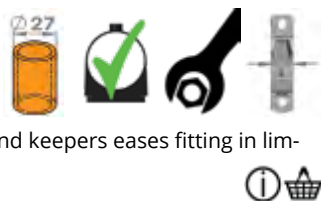
**Key Features:** Provides anti racking, narrow base cam and keeper

**Options:** Standard handle and handle & hub assemblies (see page 9) and handle sleeves. Gaskets BCP20110E, BCP20082E, BCP20085E & BCP13618E or B2000NMN-GASKET-SET (all sold separately).

**Notes:** Parts supplied loose, fully welded available, please contact us to complete a lockrod chart

The bearing bracket small (inner and outer if applicable) quantities shown/listed are for reference only, actual quantities are application and customer dependent

For more information and dimensions please visit [www.bloxwichdoorgear.com](http://www.bloxwichdoorgear.com)



## Model No BS2010N

**Supplied in:** Polished 304 Stainless Steel

**Use:** Multi purpose door gear. Commonly used on HGV etc.

**Weight:** 5.2 kg



Item	Part No	Description	Weight	Qty
1	BCSP 13605	Keeper (Bolt on)	418 g	2
2	BCSP 14173	Cam	395 g	2
3	BCSP 14174	Bearing Bracket (Outer Large)	305 g	2
4	BCSP 14094	Bearing Bracket (Outer Small)	100 g	1
5	BCP 14089	Bush	16 g	5
6	BCSP 22084	Handle Hub	189 g	1
7	BCSP 13637	Rivet	21 g	1
8	BCSP 13636	Bush	9 g	1
9	BCSP 13856	Catch	95 g	1
10	BCSP 13855	Retainer	185 g	1
11	BCSP 22182	Handle (See Options)	820 g	1
12	BCSP 14175	Anti Rack Ring	32 g	2
13	BCSP 12337	Tube Ø27 x 2mm (Sold Separately)	1235 g/m	1

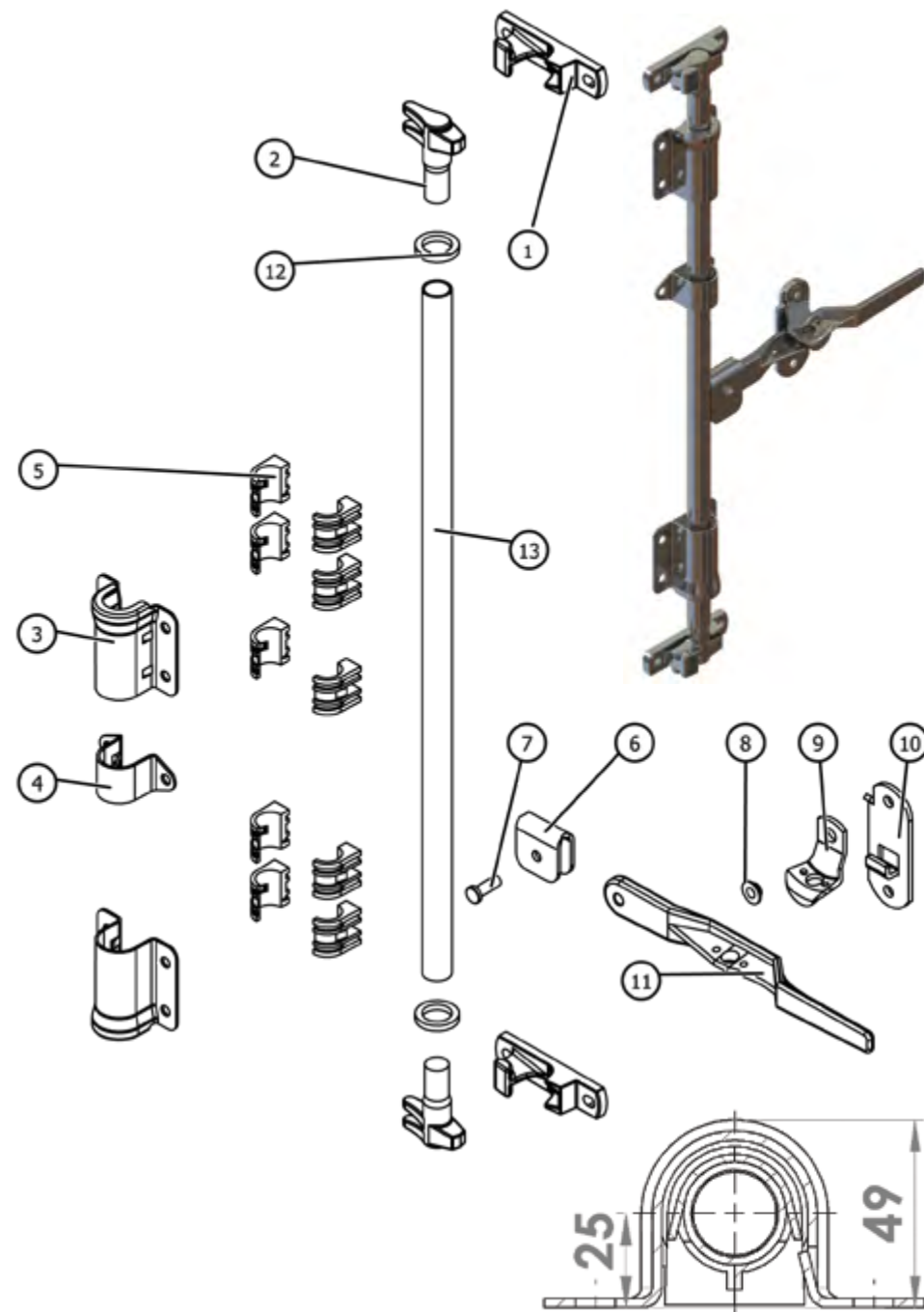
**Key Features:** Provides anti racking, supplied with narrow base keepers, brackets fit over anti-rack rings and supplied with anti-seize snap on bushes, adjustable bearing bracket positions

**Options:** Standard handle options (see page 9), BCP14081 handle sleeve

**Notes:** Parts supplied loose, fully welded available, please contact us to complete a lockrod chart

The bearing bracket small (inner and outer if applicable) quantities shown/listed are for reference only, actual quantities are application and customer dependent

For more information and dimensions please visit [www.bloxwichdoorgear.com](http://www.bloxwichdoorgear.com)



## Model No BS2533B

**Supplied in:** Polished 304 Stainless Steel

**Use:** Multi purpose door gear. Commonly used on HGV etc.

**Weight:** 4.4 kg



Item	Part No	Description	Weight	Qty
1	BCSP 12526	Keeper (Bolt on)	425 g	2
2	BCSP 12275	Cam LH	570 g	1
3	BCSP 12274	Cam RH	570 g	1
4	BCSP 14166	Bearing Bracket (Outer Large)	440 g	2
5	BCP 14089	Split Bush	12 g	5
6	BCSP 14094	Bearing Bracket (Outer Small)	30 g	1
7	BCSP 22084	Handle Hub	189 g	1
8	BCSP 13637	Rivet	21 g	1
9	BCSP 13636	Bush	9 g	1
10	BCSP 13856	Catch	95 g	1
11	BCSP 13855	Retainer	185 g	1
12	BCSP 22182	Handle (See Options)	820 g	1
13	BCSP 10120	Anti Rack Ring	30 g	2
14	BCSP 12337	Tube Ø27 x 2mm (Sold Separately)	1235 g/m	1

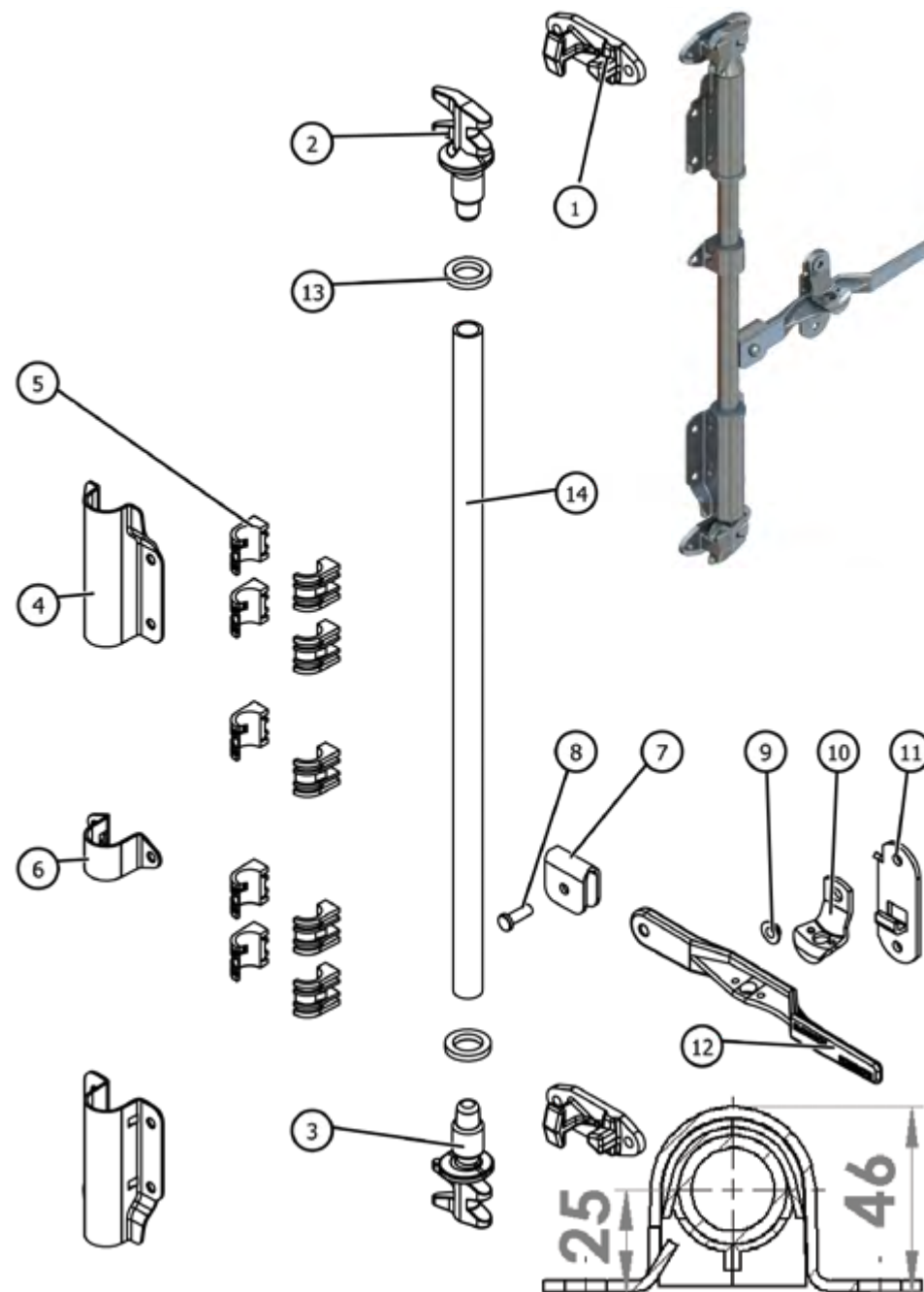
**Key Features:** Provides anti racking, swan neck outer bearing brackets clear door seals

**Options:** Standard handle options (see page 9), BCP14081 handle sleeve

**Notes:** Parts supplied loose, fully welded available, please contact us to complete a lockrod chart

The bearing bracket small (inner and outer if applicable) quantities shown/listed are for reference only, actual quantities are application and customer dependent

For more information and dimensions please visit [www.bloxwichdoorgear.com](http://www.bloxwichdoorgear.com)





## Model No BS2566

**Supplied in:** Polished 304 Stainless Steel

**Use:** Multi purpose door gear. Commonly used on ISO and offshore containers and HGV etc.

**Weight:** 4.8 kg



Item	Part No	Description	Weight	Qty
1	BCSP 12526M	Keeper (Bolt on)	425 g	2
2	BCSP 12275	Cam LH	630 g	1
3	BCSP 12274	Cam RH	630 g	1
4	BCSP 12689	Bearing Bracket (Outer Large)	460 g	2
5	BCP 13597	Bush - Long	40 g	2
6	BCSP 13507	Bearing Bracket (Outer Small)	110 g	2
7	BCP 13596	Bush - Short	17 g	2
8	BCSP 22084	Handle Hub	189 g	1
9	BCSP 13637	Rivet	21 g	1
10	BCSP 13636	Bush	9 g	1
11	BCSP 13856	Catch	110 g	1
12	BCSP 13855	Retainer	220 g	1
13	BCSP 22182M	Handle (See Options)	820 g	1
14	BCSP 10176	Anti Rack Ring	32 g	2
15	BCSP 12338	Tube Ø34 x 2.6mm (Sold Separately)	2120 g/m	1

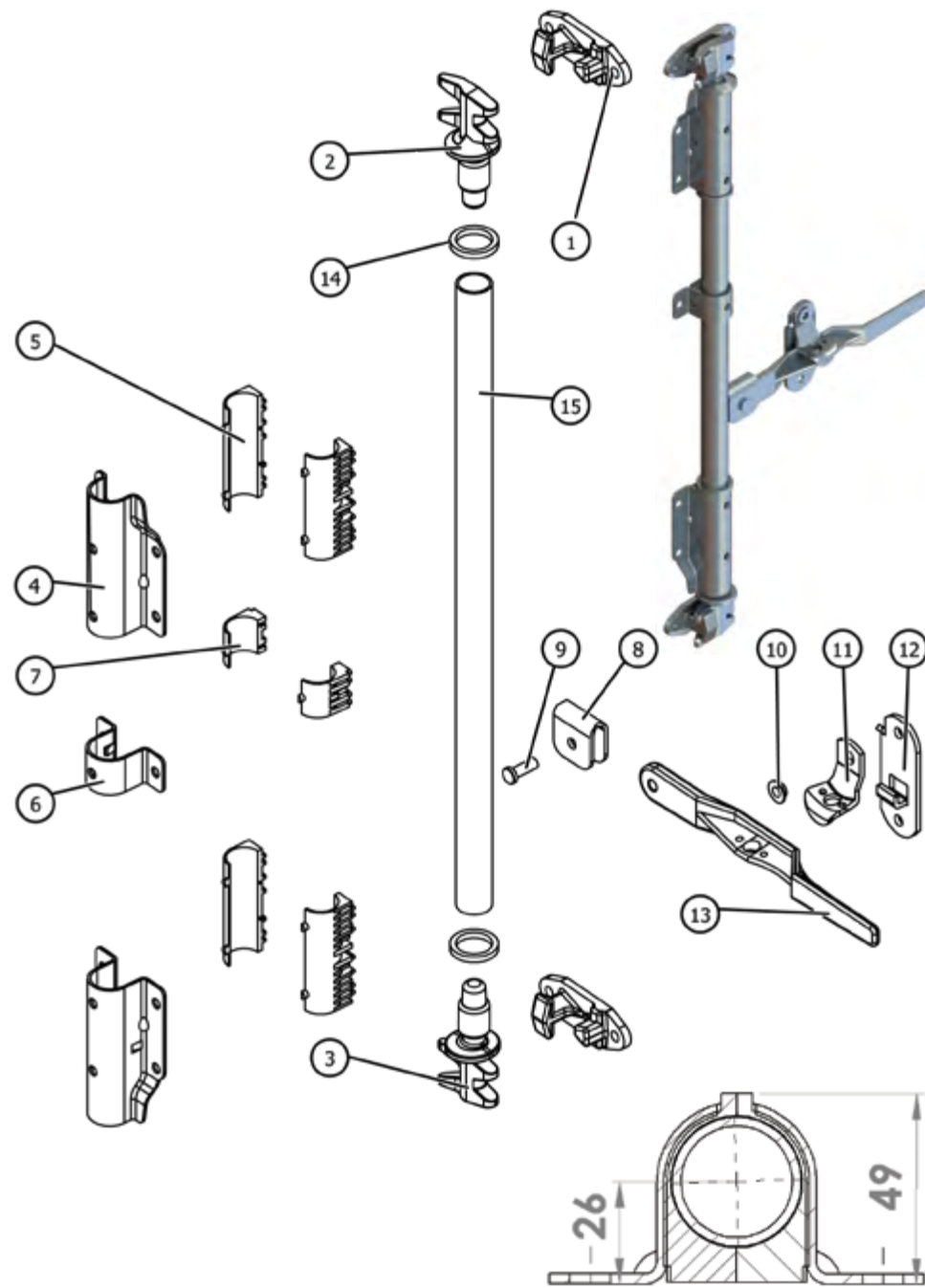
**Key Features:** Provides anti racking, swan neck outer bearing brackets clear door seals

**Options:** Standard handle options (see page 9), BCP14081 handle sleeve

**Notes:** Parts supplied loose, fully welded available, please contact us to complete a lockrod chart

The bearing bracket small (inner and outer if applicable) quantities shown/listed are for reference only, actual quantities are application and customer dependent

For more information and dimensions please visit [www.bloxwichdoorgear.com](http://www.bloxwichdoorgear.com)



## Model No BS2566M

**Supplied in:** Polished 304 Stainless Steel

**Use:** Multi purpose door gear. Commonly used on ISO and offshore containers and HGV etc.

**Weight:** 4.9 kg



Item	Part No	Description	Weight	Qty
1	BCSP 12526M	Keeper (Bolt on)	425 g	2
2	BCSP 12275	Cam L H	630 g	1
3	BCSP 12274	Cam R H	630 g	1
4	BCSP 12684	Bearing Bracket (Outer Large)	466 g	2
5	BCP 13597	Bush - Long	40 g	2
6	BCSP 13507	Bearing Bracket (Outer Small)	110 g	2
7	BCP 13596	Bush - Short	17 g	2
8	BCSP 22084	Handle Hub	189 g	1
9	BCSP 13637	Rivet	21 g	1
10	BCSP 13636	Bush	9 g	1
11	BCSP 13856	Catch	110 g	1
12	BCSP 13855	Retainer	220 g	1
13	BCSP 22182M	Handle (See Options)	820 g	1
14	BCSP 10176	Anti Rack Ring	32 g	4
15	BCSP 12338	Tube Ø34 x 2.6mm (Sold Separately)	2120 g/m	1

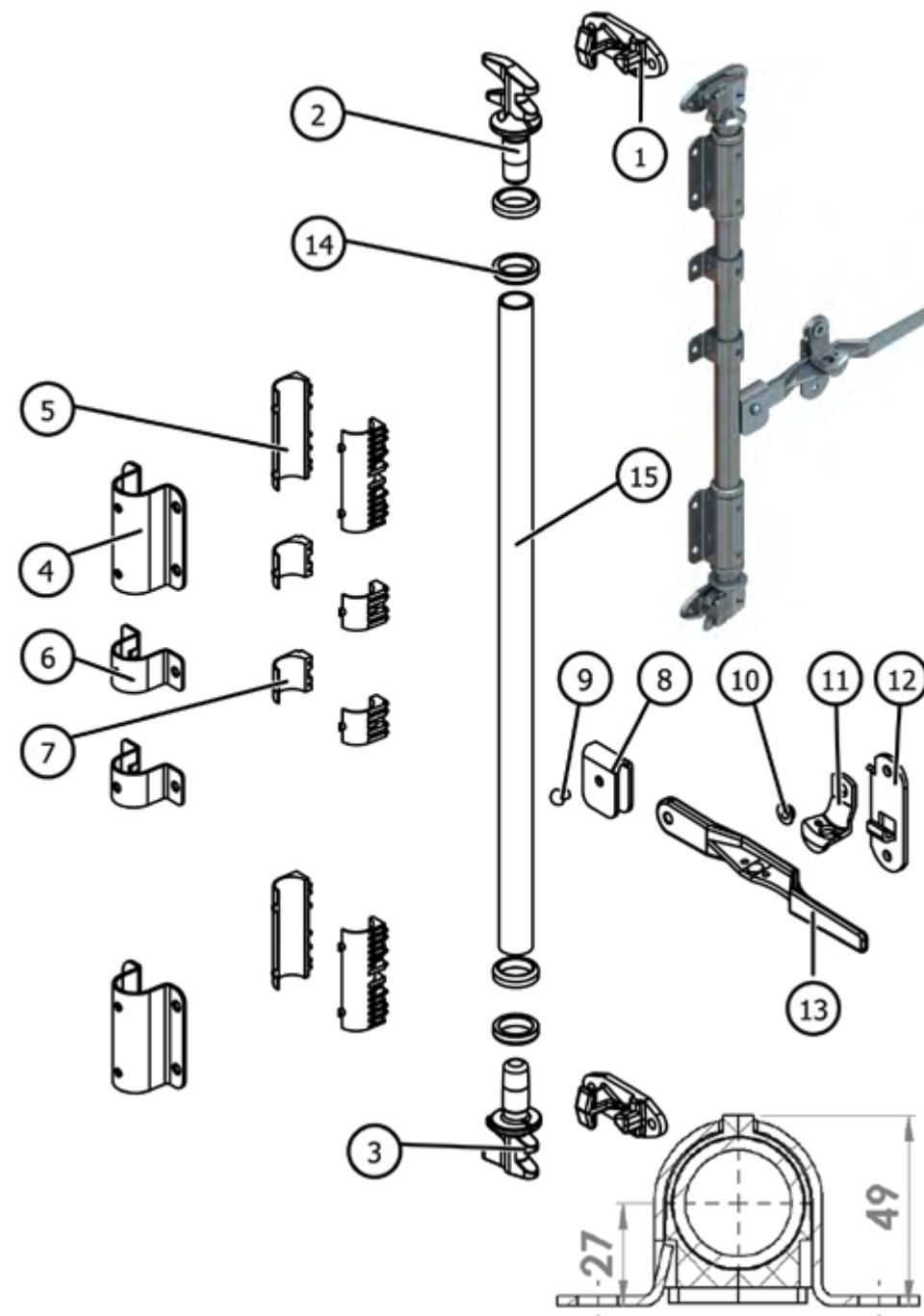
**Key Features:** Provides anti racking, adjustable bearing bracket positions

**Options:** Standard handle options (see page 9), BCP14081 handle sleeve

**Notes:** Parts supplied loose, fully welded available, please contact us to complete a lockrod chart

The bearing bracket small (inner and outer if applicable) quantities shown/listed are for reference only, actual quantities are application and customer dependent

For more information and dimensions please visit [www.bloxwichdoorgear.com](http://www.bloxwichdoorgear.com)



## Model No BS3500A

**Supplied in:** Polished 304 Stainless Steel

**Use:** Multi purpose door gear. Commonly used on ISO and offshore containers and HGV etc.

**Weight:** 7.3 kg



Item	Part No	Description	Weight	Qty
1	BCSP 11034	Keeper	455 g	2
2	BCSP 11033	Cam LH	675 g	1
3	BCSP 11032	Cam RH	675 g	1
4	BCSP 23153	Bearing Bracket (Outer Large)	890 g	2
5	BCSP 11748	Bearing Bracket (Inner Large)	560 g	2
6	BCSP 10176	Anti Rack Ring	64 g	2
7	BCSP 22245	Bearing Bracket (Outer Small)	180 g	2
8	BCSP 22246	Bearing Bracket (Inner Small)	110 g	2
9	BCSP 22084	Handle Hub	189 g	1
10	BCSP 13637	Rivet	21 g	1
11	BCSP 13636	Bush	9 g	1
12	BCSP 13856	Catch	110 g	1
13	BCSP 13855	Retainer	220 g	1
14	BCSP 22182M	Handle (See Options)	820 g	1
15	BCSP 12338	Tube Ø34 x 2.6mm (Sold Separately)	2120 g/m	1

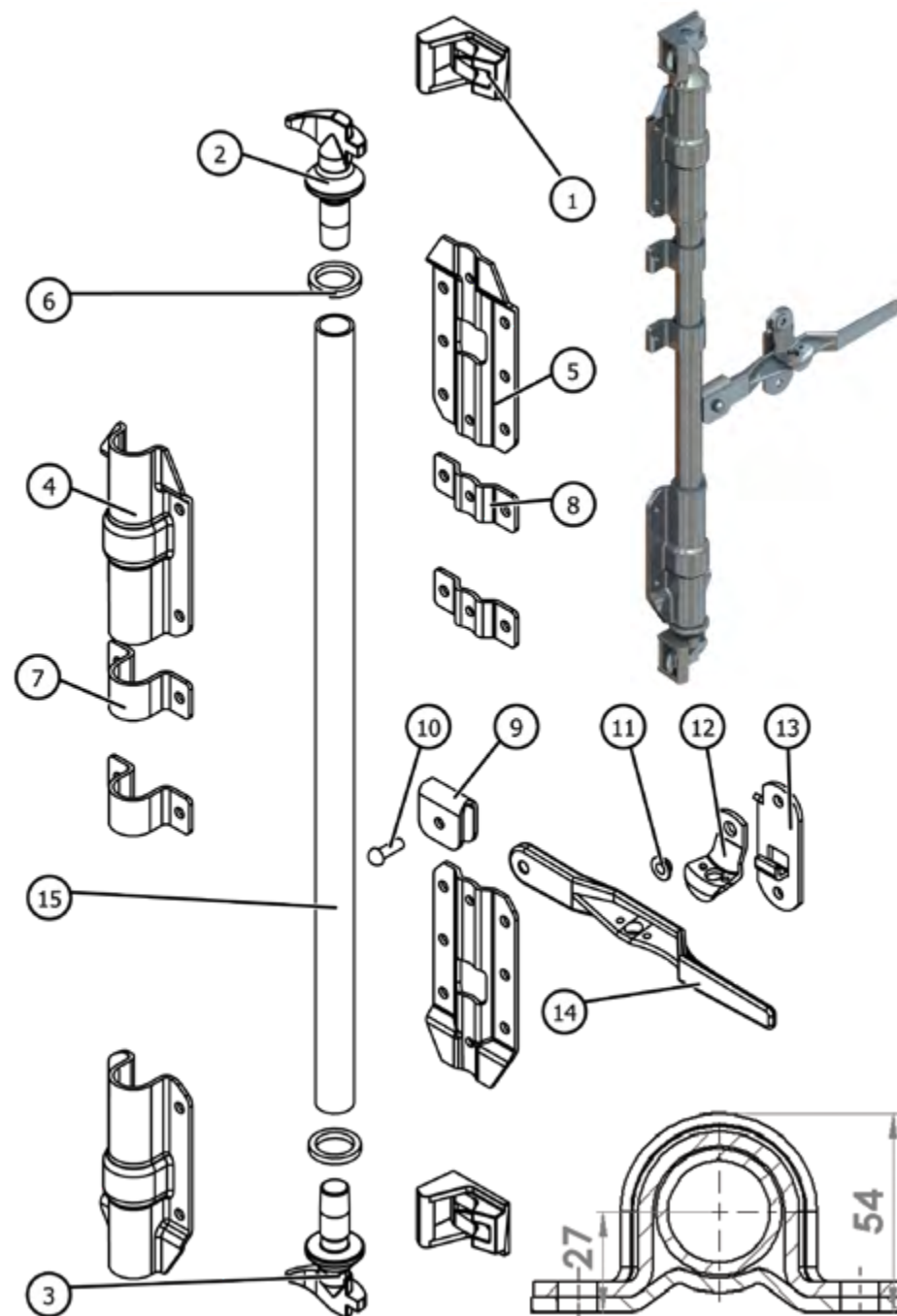
**Key Features:** Provides anti racking, swan neck outer bearing brackets clear door seals

**Options:** Standard handle options (see page 9), BCP14081 handle sleeve

**Notes:** Parts supplied loose, fully welded available, please contact us to complete a lockrod chart

The bearing bracket small (inner and outer if applicable) quantities shown/listed are for reference only, actual quantities are application and customer dependent

For more information and dimensions please visit [www.bloxwichdoorgear.com](http://www.bloxwichdoorgear.com)



## Model No BS3566



**Supplied in:** Polished 304 Stainless Steel

**Use:** Multi purpose door gear. Commonly used on ISO and offshore containers and HGV etc.

**Weight:** 4.8 kg



Item	Part No	Description	Weight	Qty
1	BCSP 11034	Keeper	455 g	2
2	BCSP 11033	Cam LH	675 g	1
3	BCSP 11032	Cam RH	675 g	1
4	BCSP 12689	Bearing Bracket (Outer Large)	460 g	2
5	BCP 13597	Bush - Long	40 g	2
6	BCSP 13507	Bearing Bracket (Outer Small)	110 g	1
7	BCP 13596	Bush - Short	17 g	1
8	BCSP 22084	Handle Hub	189 g	1
9	BCSP 13637	Rivet	21 g	1
10	BCSP 13636	Bush	9 g	1
11	BCSP 13856	Catch	110 g	1
12	BCSP 13855	Retainer	220 g	1
13	BCSP 22182M	Handle (See Options)	820 g	1
14	BCSP 10176	Anti Rack Ring	32 g	2
15	BCSP 12338	Tube Ø34 x 2.6mm (Sold Separately)	2120 g/m	1

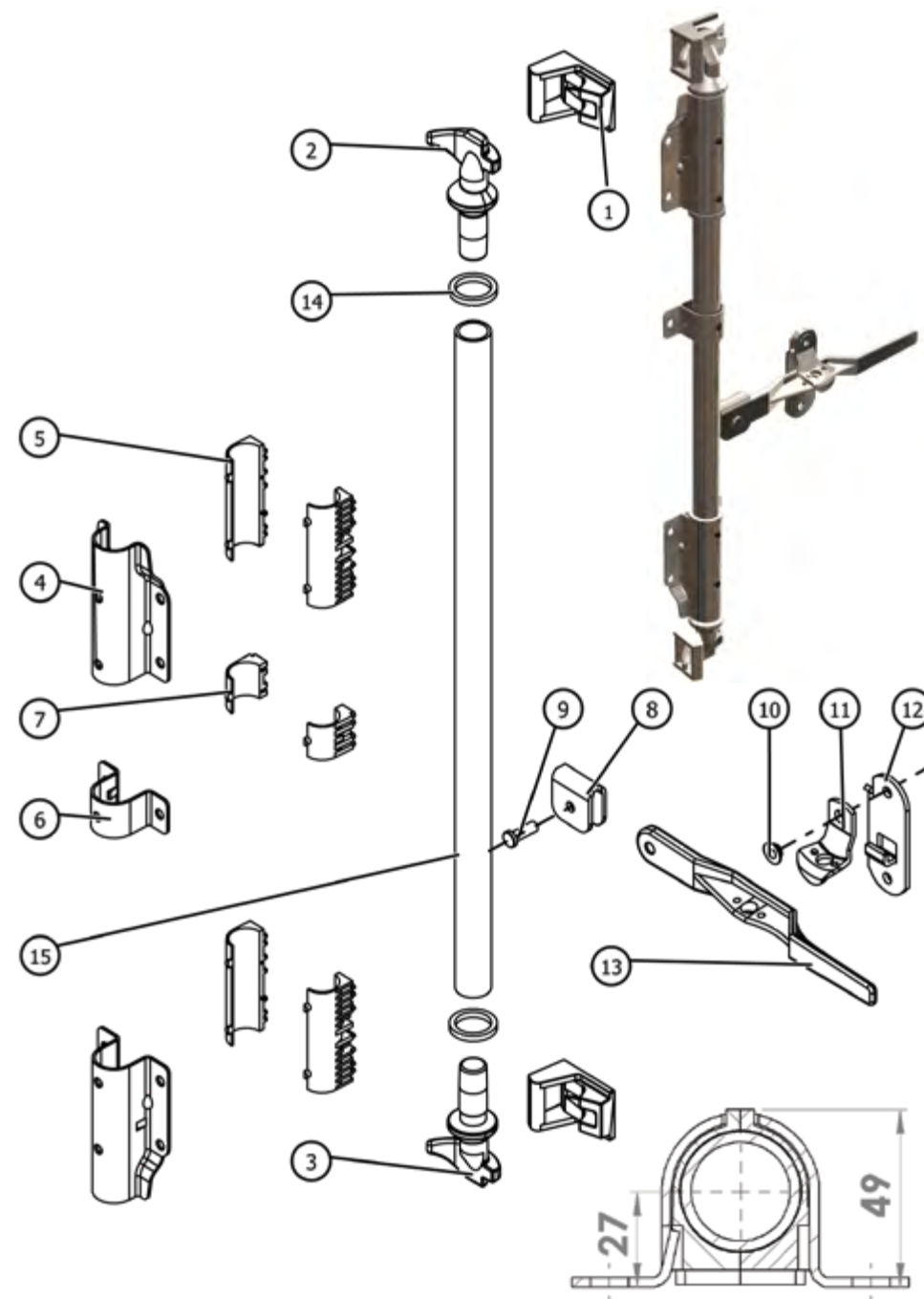
**Key Features:** Provides anti racking, swan neck outer bearing brackets clear door seals

**Options:** Standard handle options (see page 9), BCP14081 handle sleeve

**Notes:** Parts supplied loose, fully welded available, please contact us to complete a lockrod chart

The bearing bracket small (inner and outer if applicable) quantities shown/listed are for reference only, actual quantities are application and customer dependent

For more information and dimensions please visit [www.bloxwichdoorgear.com](http://www.bloxwichdoorgear.com)





## Fully Welded (FW) Door Gear

All models of the door gear shown in this catalogue can be supplied to your exact dimensions, fully welded and finished as required by Bloxwich.

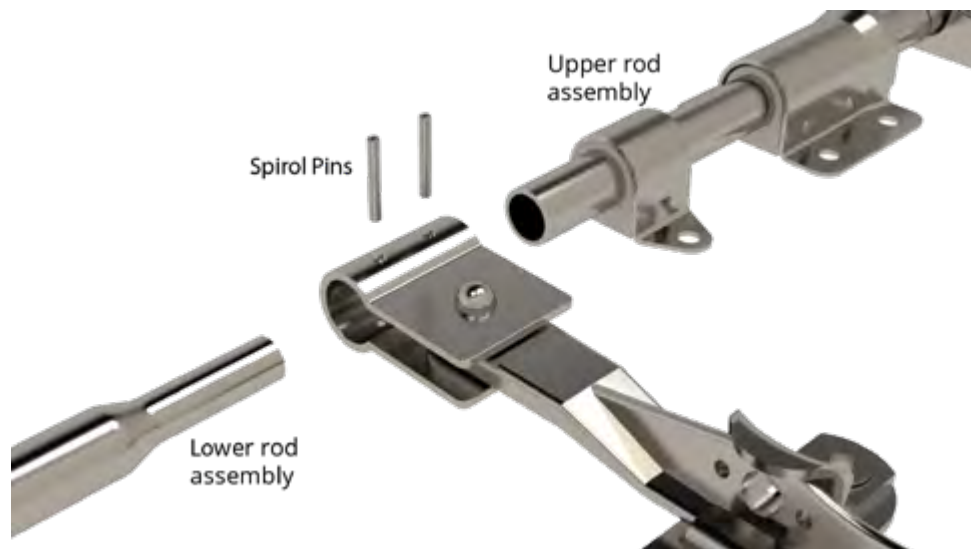
Please contact us or see <https://www.bloxwichgroup.com/bloxwichtc/downloads/> to complete a lockrod chart and get a quote.

**Benefits:** Just bolt or weld in place, Bloxwich quality manufacture throughout & simply place an order and await your scheduled delivery.

## Fully Welded Variheight (V) Door Gear

Commonly used on HGV trailers as the variable height design easily allows door gear to be fitted to a range of trailer heights. Fits left hand or right hand doors and can be mounted horizontally or vertically.

Any model of 27mm door gear can be supplied as variheight door gear. No welding is required when you receive the door gear as the upper and lower rod assemblies are already fully welded, other parts supplied loose. Cam centres dimension controlled by customer by simply reducing length of upper rod assembly.



Lower rod assembly is spigotted for easy assembly and alignment with upper rod assembly.

Handle and hub assembly to be fixed in position by cross-drilling and pinning. \* Recommended hole size =  $\varnothing 6.13$  max /  $\varnothing 5.95$  min.

**Benefits:** Suitable for a range of heights/widths, just bolt in place, no lock rod chart required & available from stock.

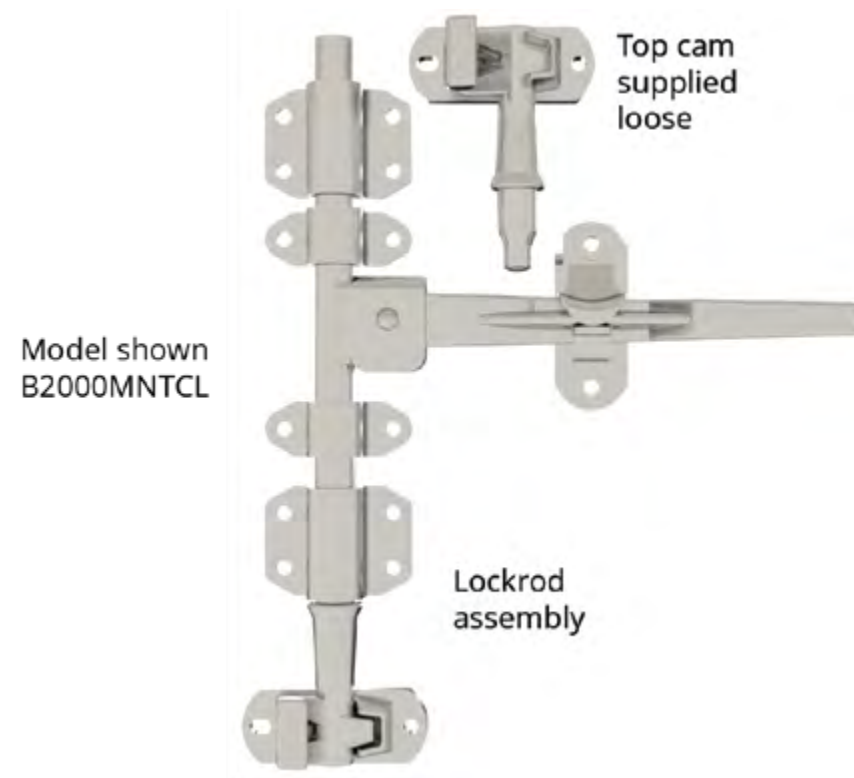
## Top Cam Loose (TCL) Door Gear

Also commonly used on HGV trailers as TCL easily allows door gear to be fitted to a range of trailer heights. TCL door gear is handed and can be mounted horizontally or vertically.

Any model of door gear can be supplied as TCL door gear. Lock rod assembly fully welded except the top cam which is supplied loose.

Cam centres dimension controlled by customer by simply reducing the length of tube and welding the top cams in position.

**Benefits:** Suitable for a range of heights/widths & no lock rod chart required.



## Other Door Gear

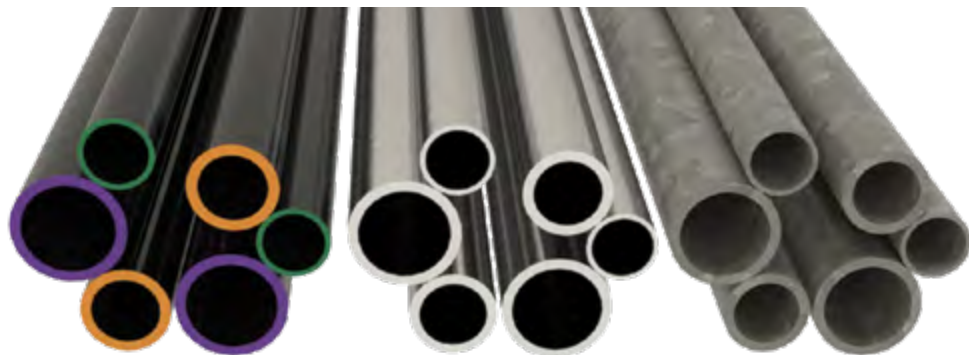
We can also manufacture and test fit the operation of bespoke door gear to customers exact requirements with different combinations of parts and or alternative parts etc, please contact us to discuss your requirements.

## Mild Steel Door Gear Tube

**Supplied in:** Mild steel self colour, zinc plated or galvanised

**Use:** Tube for use on all Bloxwich door gear, other lengths available on request

**Weight:** See table



Description	Length	Part No	Weight
Ø22 x 1.6 wall	1000	BCP 12339/1000	0.83 kg
"	2000	BCP 12339/2000	1.66 kg
"	3000	BCP 12339/3000	2.48 kg
"	6000	BCP 12339/6000	4.97 kg
Ø27 x 3.2 wall	1000	BCP 12337/1000	1.87 kg
"	2000	BCP 12337/2000	3.74 kg
"	3000	BCP 12337/3000	5.61 kg
"	7500	BCP 12337/7500	14.02 kg
Ø34 x 3.2 wall	1000	BCP 12338/1000	2.41 kg
"	2000	BCP 12338/2000	4.82 kg
"	3000	BCP 12338/3000	7.23 kg
"	7500	BCP 12338/7500	18.07 kg

Other lengths available on request, please contact us for details.

## Stainless Steel Door Gear Tube

**Supplied in:** Polished 304 stainless steel

**Use:** Tube for use on all Bloxwich door gear, other lengths available on request

**Weight:** See table



Description	Length	Part No	Weight
Ø22 x 1.6 wall	1000	BCSP 12339/1000	0.83 kg
"	2000	BCSP 12339/2000	1.66 kg
"	3000	BCSP 12339/3000	2.48 kg
"	6000	BCSP 12339/6000	4.97 kg
Ø27 x 2.0 wall	1000	BCSP 12337/1000	1.24 kg
"	2000	BCSP 12337/2000	2.47 kg
"	3000	BCSP 12337/3000	3.71 kg
"	6000	BCSP 12337/6000	7.41 kg
Ø34 x 2.6 wall	1000	BCSP 12338/1000	2.12 kg
"	2000	BCSP 12338/2000	4.24 kg
"	3000	BCSP 12338/3000	6.36 kg
"	6000	BCSP 12338/6000	12.72 kg

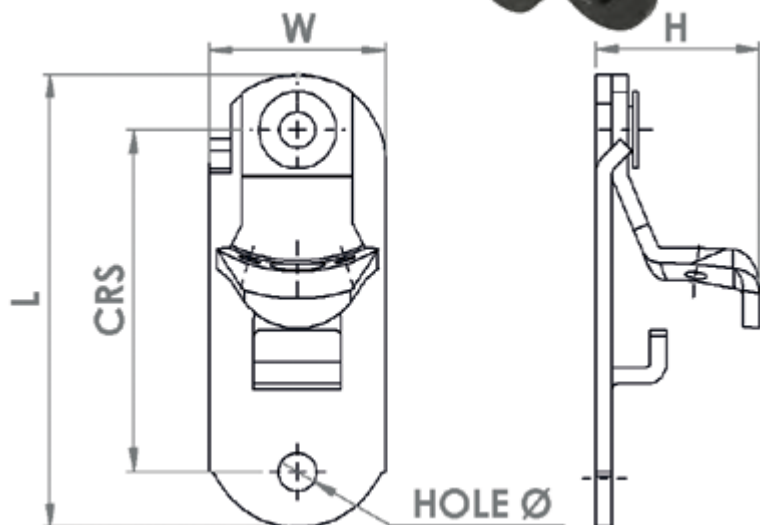
Other lengths available on request, please contact us for details.

## Door Handle Retainers

**Supplied in:** Mild steel self colour, zinc plated or galvanised and 304 stainless steel

**Use:** Selection of bolt-on & weld on door handle retainer kits/assemblies for use with Bloxwich forged, pressed/pressed long and 'D' grip handles

**Weight:** See table



Model	L	W	H	Mounting Method, Hole Ø / CRS	Use with Handle	Weight
BCP16046	138	40	29	Bolt-on, 8.7 / 98	BCP14354 small forged	215 g
BCP14273	108	51	47	Weld on	22182M forged	150 g
BCP14290	130	51	47	Bolt/weld on, 11/N/A	22182M forged	356 g
BCP16047	130	51	47	Bolt-on, 11 / 98	22182M forged	342 g
BCP20072	130	51	47	Bolt-on, 11 / 98	22182M forged	342 g
BCP13635	130	51	44	Bolt-on, 11 / 98	BCP12400 pressed or BCP13773 D grip	295 g

Model	L	W	H	Mounting Method, Hole Ø / CRS	Use with Handle	Weight
BCSP16046	138	40	29	Bolt-on, 8.7 / 98	BCSP14354 small forged	215 g
BCSP16047	130	51	47	Bolt-on, 11 / 98	BCSP22182 forged	342 g
BCSP13635	130	51	44	Bolt-on, 11 / 98	BCSP12400 pressed or BCSP13773 D grip	295 g

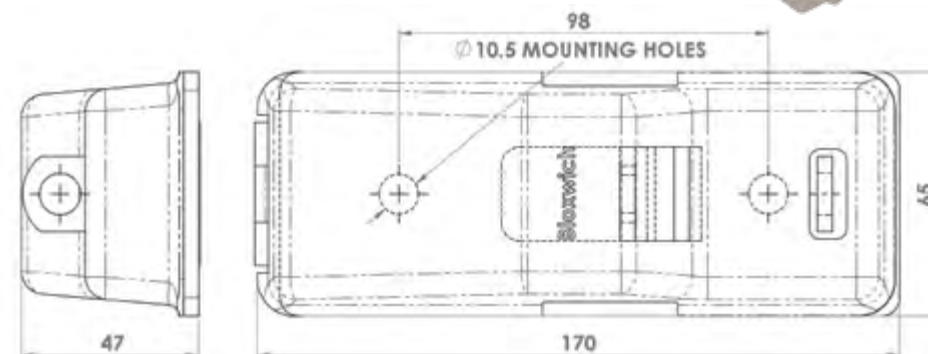
## Model No BCSP13309

### T.I.R Retainer Cover

**Supplied in:** 304 Stainless Steel

**Use:** Can be used on all door gear with pressed or 'D' grip handles

**Weight:** 575 g



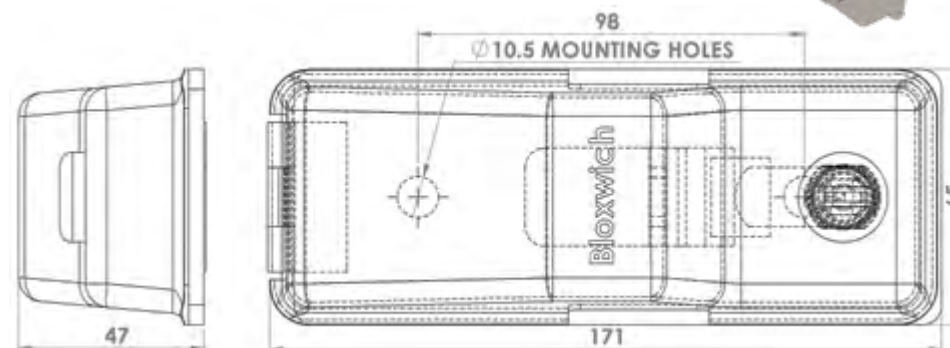
## Model No BCSP13310

### T.I.R Retainer Cover (With Lock)

**Supplied in:** 304 Stainless Steel

**Use:** Can be used on all door gear with pressed or 'D' grip handles

**Weight:** 595 g

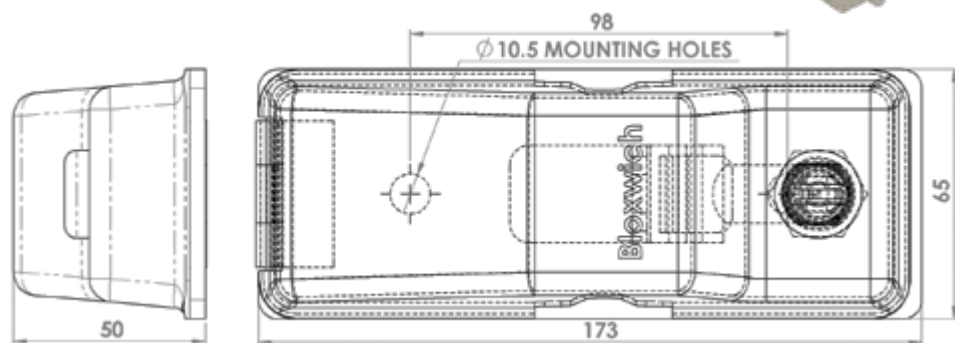


## Model No BCSP20076 T.I.R Retainer Cover (With Lock)

**Supplied in:** 304 Stainless Steel

**Use:** Can be used on all door gear with forged handles

**Weight:** 595 g

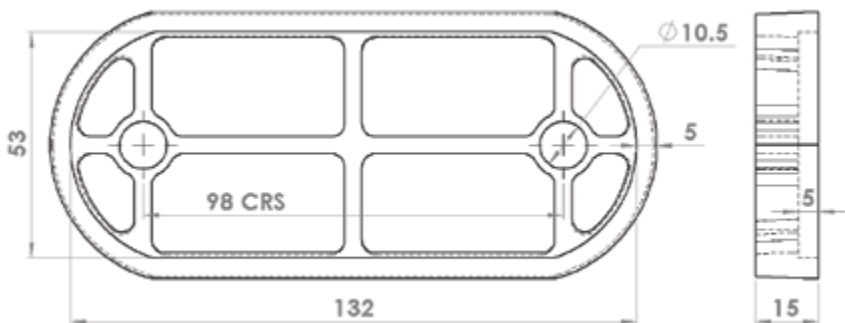


## Model No BCP13618N Door Handle Spacer

**Supplied in:** Injection moulded plastic. Grey, yellow or black as standard, other colours available on request.

**Use:** Door handle spacer to increase hand access of forged, D grip and pressed handles when used with BC(S)P13855, BC(S)P12398 & BCP14033 retainers or any kits they are part of

**Weight:** 70 g



## Door Gear Gaskets

**Supplied in:** EPDM Rubber (black)

**Use:** To prevent 'in service' abrasion with door surfaces, and possible 'galvanic' corrosion when dissimilar materials are in direct contact with each other. Others available on request

**Weight:** See tables

### For Retainers



Model	Use with Retainer	Door Gear Model	Tube Ø	Weight
BCP13618E	BC(S)P12398, 13855, 14033	Forged, D Grip & Pressed Handles	27 & 34	13 g
BCP13619E	BC(S)P14355	Small Forged Handles	22	9 g

### For Small Bearing Brackets

Model	Use with Small Bearing Bracket	Door Gear Model	Tube Ø	Weight
BCP13617E	BC(S)P13507	BE2566M, B2566, BS2566, BS2566M, BS3566	34	8 g
BCP20073E	BC(S)P22245/BC(S)P22246, 22081/22082	B2500A, BS3500A, B2000	27 & 34	6 g
BCP20081E	BC(S)P14094	B2533B, BS2533B, BS2010N	27	4 g
BCP20085E	BCP14064	B2000MN	27	5 g

### For Large Bearing Brackets

Model	Use with Large Bearing Bracket	Door Gear Model	Tube Ø	Weight
BCP13616E	BC(S)P12684, BCP14037	BE2566M, B2566, BS2566M	34	21 g
BCP20074E	BC(S)P11748, 23153, BCSP23153	B2500A, BS3500A	34	21 g
BCP20082E	BCP14063, 22080-HD/22077-HD	B2000, B2000MN	27	9 g
BCP20083E	BC(S)P14166, BCSP12689	B2533B, BS2533, BS2566, BS3566	27	14 g
BCP20084E	BCSP14174	BS2010N	27	11 g
BCP20086E	BC(S)P11238, BC(S)P12188	B1000, B1000M, BS1000	22	7 g

### For Keepers

Model	Use with Keeper	Door Gear Model	Tube Ø	Weight
BCP20105E	BC(S)P12180	B(S)1000	22	4 g
BCP20106E	BC(S)P12526M	B(S)2533B, B2500A, B(S)2566, BE2566M, B2588, BS2566M & BS3500A	27 & 34	4 g
BCP20109E	22788/1	B2000	27	6 g
BCP20110E	BC(S)P13605	B2000NMN, B2000N, BS2010N	27	4 g